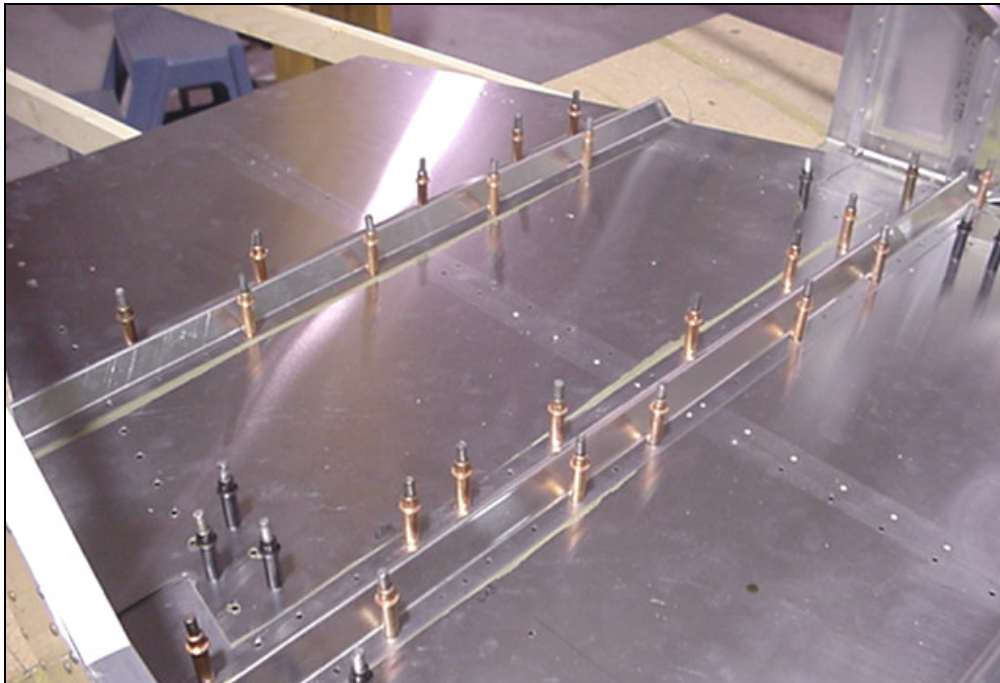


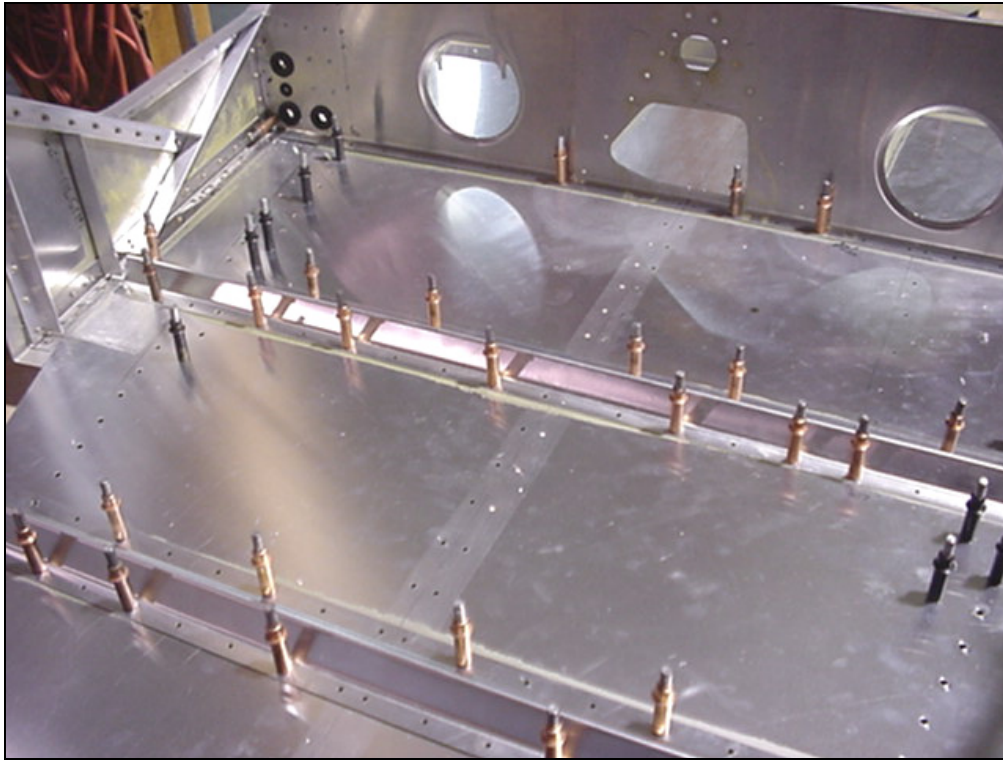
Wait to drill the ends of the Seat Front 7F11-1 to the L angle on the cabin side at location A-A Ref 7-F-9 until after the Cabin Frame is installed. Ref Fuselage Cabin Frame, Section 10, page 11.

NOTE: The width of the firewall at the front end of the Front Uprights 7F9-7 and the width of the rear fuselage assembly along the aft end of the Cabin Side 7F9-1 will the side angle between the side of the cabin sides and the floor skin.



**7F8-2 Front Floor Stiffener**

Cut and position the Front Floor Stiffener to the Floor 7F8-7. Back drill through the Floor 7F8-7.



**7F8-3 Rear Floor Stiffener**

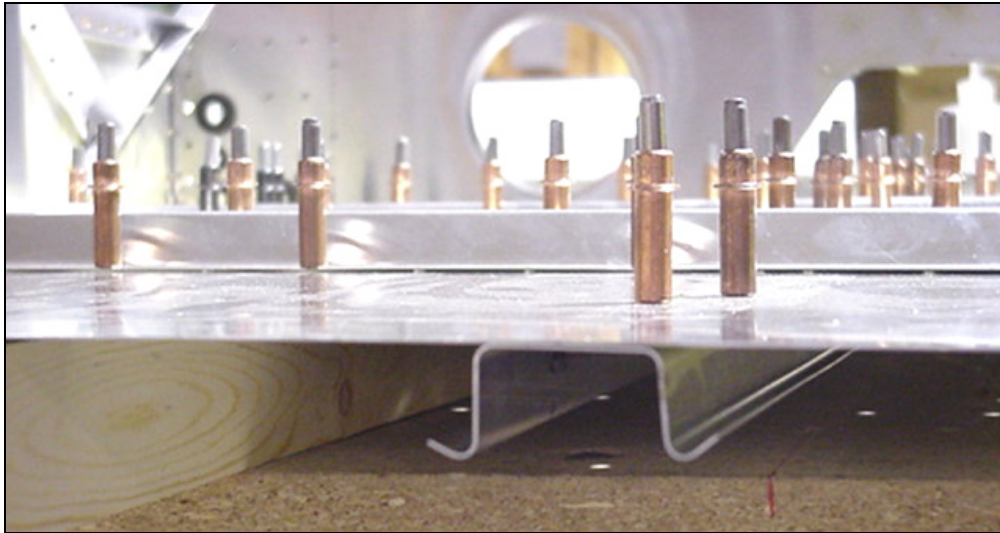
Cut and position the Rear Floor Stiffener on the Floor and Cabin Sides and drill.



**7F8-1 Center Floor Stiffener**

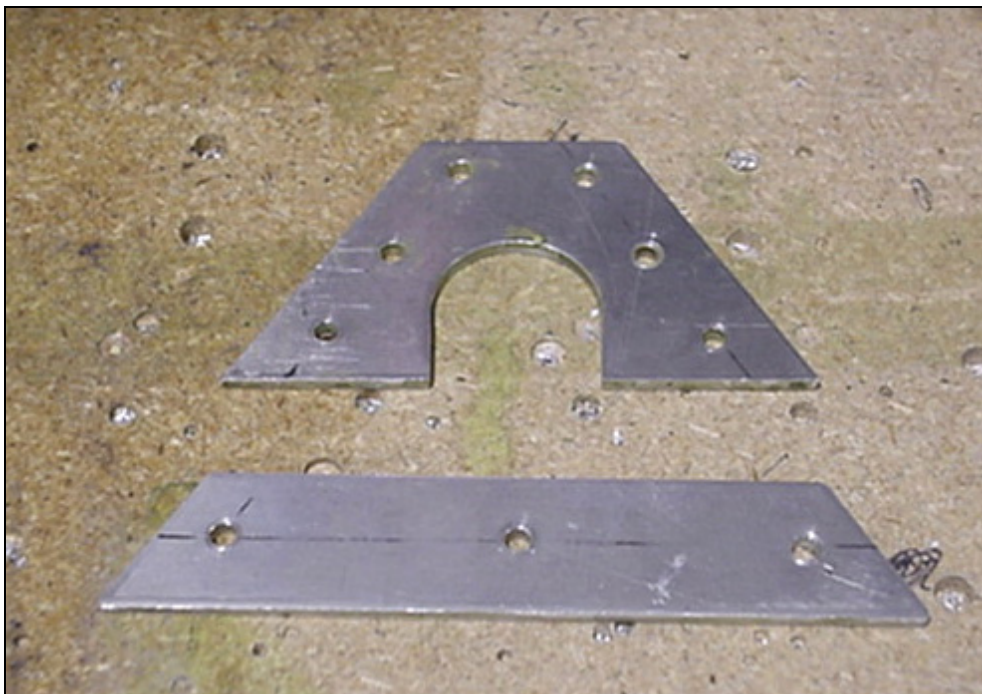
Mark the center on the Center Floor Stiffener.





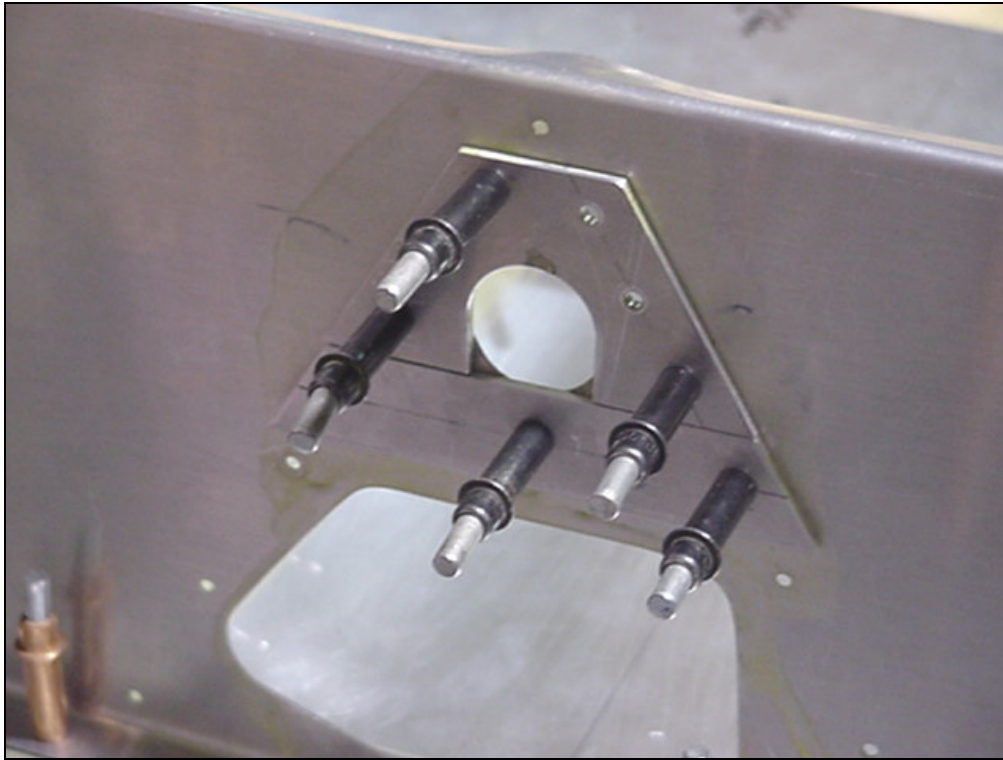
**7F8-1 Center Floor  
Stiffener**

Position the Stiffener centerline on the aircraft centerline. Back drill through the Floor 7F8-7.



**7F11-2 Front Bearing  
Top  
7F11-3 Front Bearing  
Bottom**

Mark a centerline up 14mm for the location of the 1-1/8 hole. Using a 1-1/8 Flat Face Drill bit will work the best. Layout the rivet holes and pitot drill.



**7F11-2 Front Bearing  
Top  
7F11-3 Front Bearing  
Bottom**

The top of the hole is 154mm from the bottom of the Seat Front 7F11-1. Position 7F11-2 drill and cleco. Then position the Front Bearing Bottom drill and cleco.



**7F11-4 Tunnel**

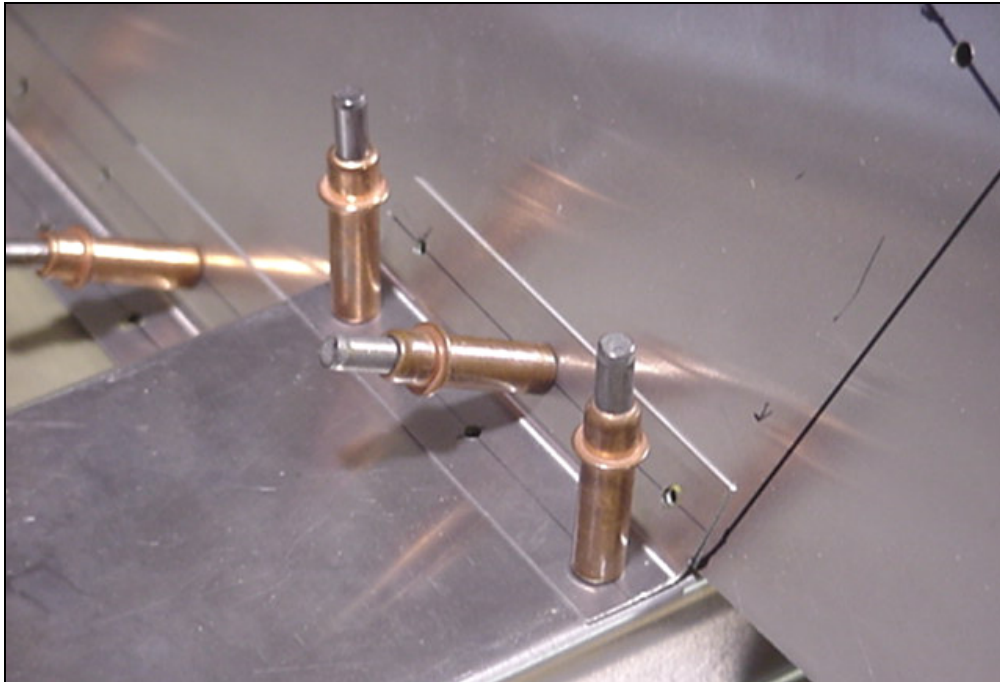
Measure from the Seat Front to the Bottom Channel 7F10-1. Measure up 38mm for the Bottom Channel and make the cutout for the Tunnel. At this time the Tunnel will be kept long.





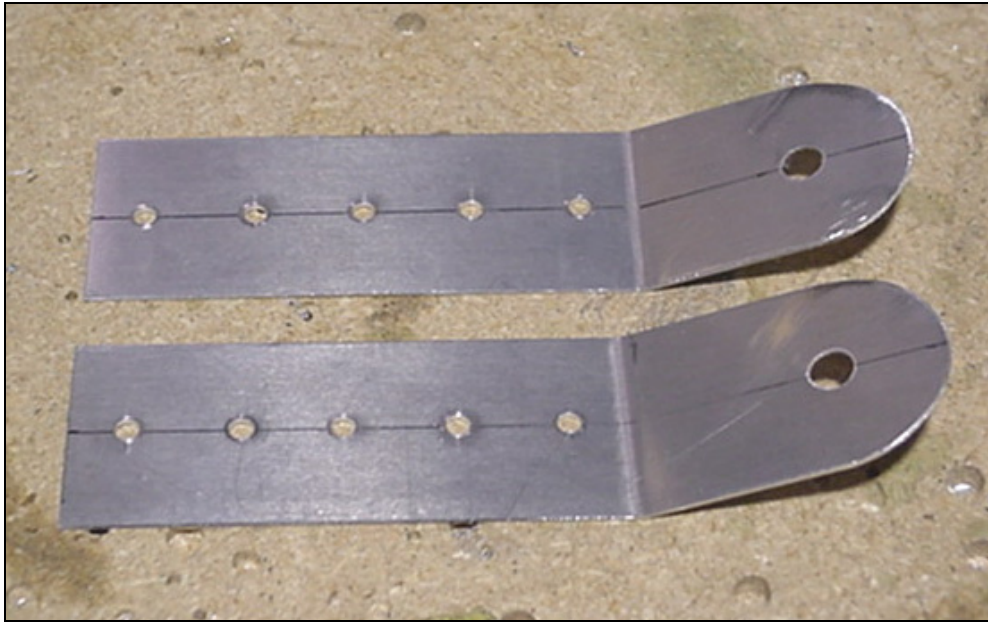
**7F11-4 Tunnel  
7F11-4A Tunnel Angles**

Position the Tunnel to the Seat Front. Cut two Tunnel Angles 7F11-4A for the front section. Lay out the rivet lines pitch 40 and drill. There are two L angles on the front side of the Tunnel to the Seat Front.



**7F11-4 Tunnel  
7F11-4A Tunnel Angles  
7F10-1 Bottom Channel**

Cut 7F11-4A into two 100mm pieces, and drill and cleco them to the Tunnel and Bottom Channel 7F10-1.



**7F16-3 Central Seat  
Belt Attachment**

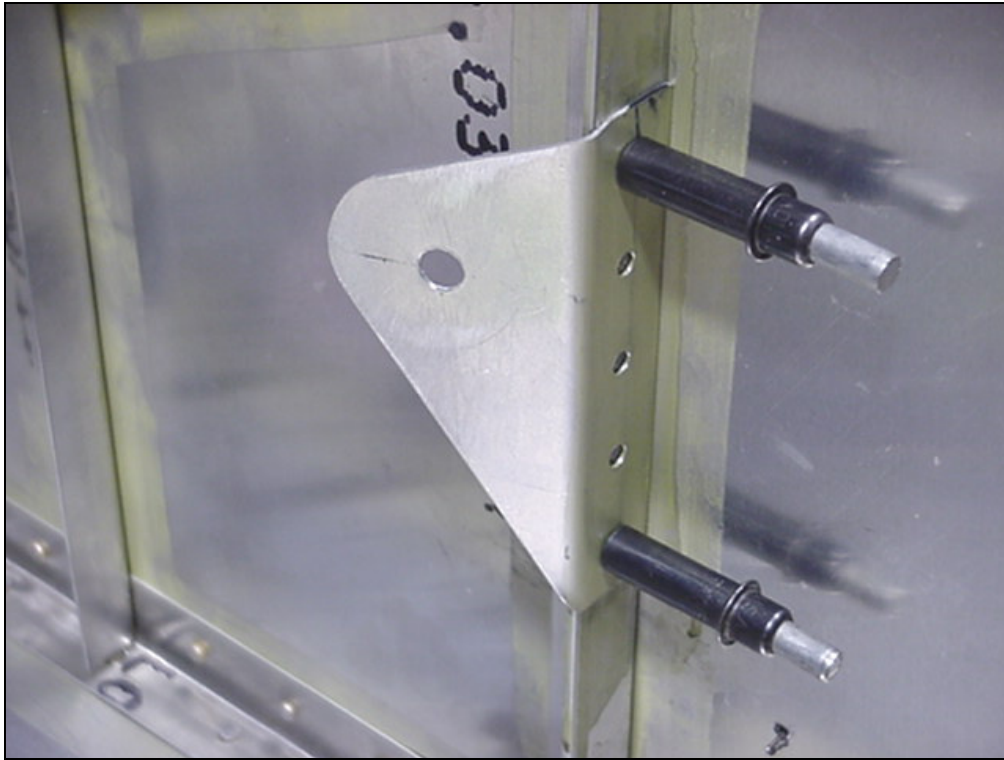
Mark the centerlines and layout the five A5 rivets and the 5/16 bolt for the Seat Belt.



**7F16-2 Lateral Belt  
Attachment**

Layout and pilot drill the five A5 rivets and the 5/16" bolthole.





**7F16-2 Lateral Belt Attachment  
7F9 Cabin Sides**

Position the Lateral Belt Attachment to the Cabin Sides on 7F9-3 Rear Upright. The center of the bolthole is 180mm from the bottom of the Fuselage Floor. Drill and cleco.



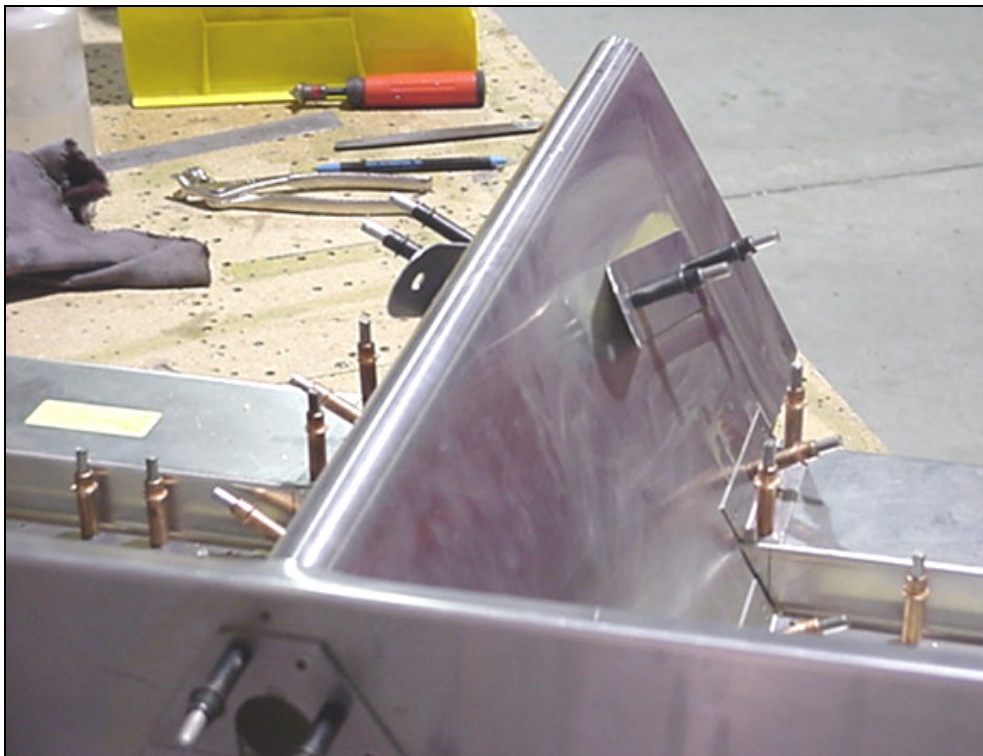
**7F16-2 Lateral Belt Attachment**

Drill and Cleco each side.



**7F11-4 Tunnel  
7F16-3 Central Seat Belt  
Attachment**

Position Central Seat Belt Attachment to the Tunnel 7F11-4. It is 300mm from 7F11-1 Seat Front and at the same height as 7F16-2 (7F16).



3 point harness

**7F11-4 Tunnel  
7F16-3 Central Seat Belt  
Attachment**

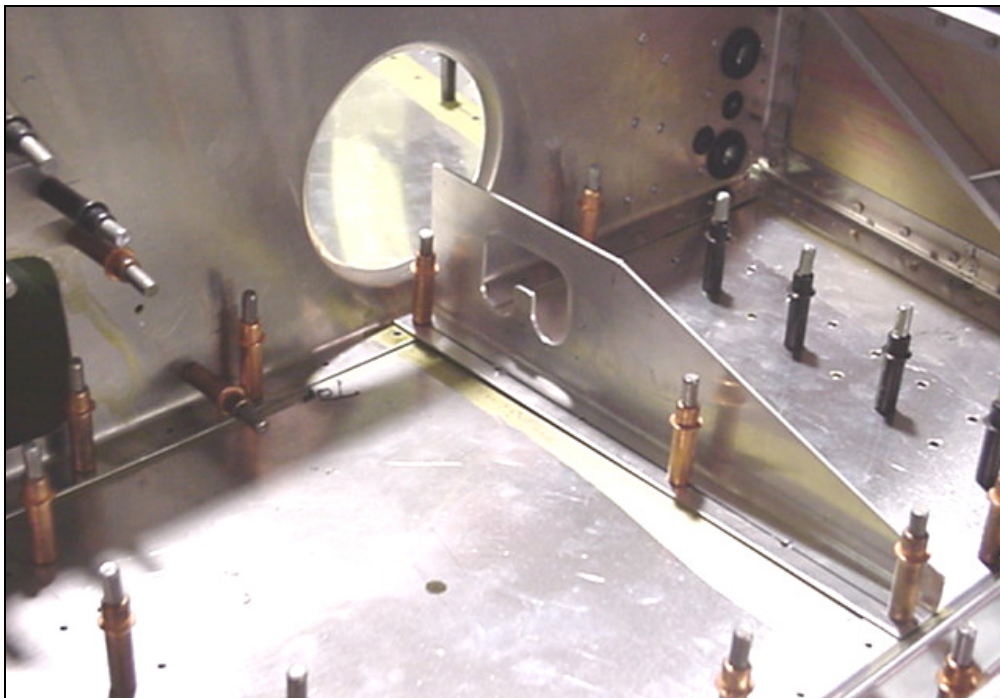
Drill and Cleco to the Tunnel.





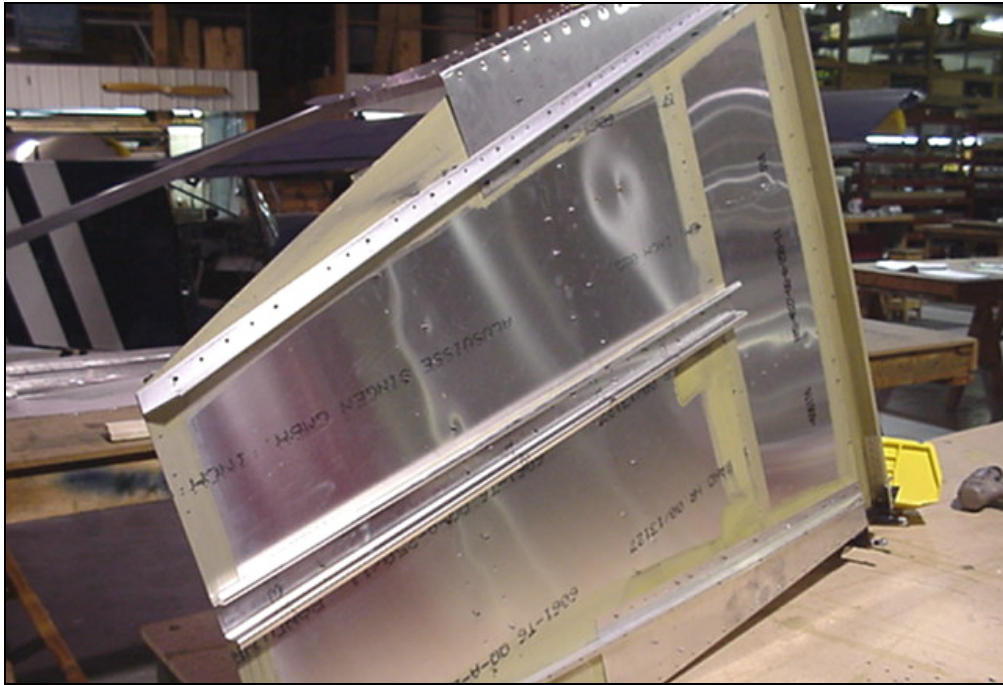
**7C3-3 Flaperon Stop**

Layout the cut out for the flap position. The Flaperon stop shown is 7C3-3 and limits the flap extension to 15 degrees.



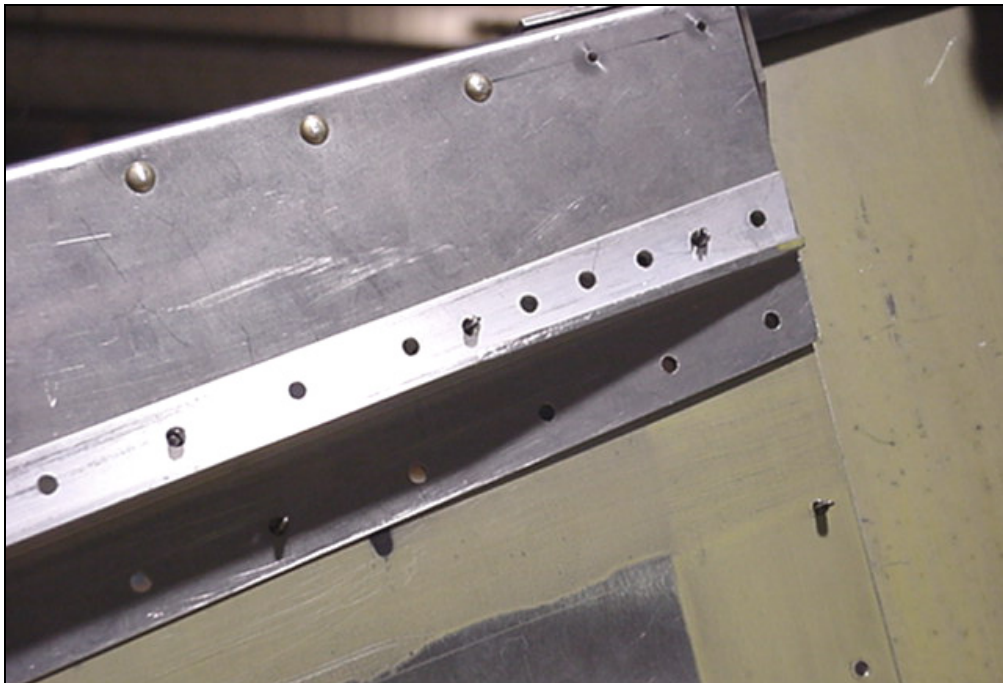
**7C3-2 Flaperon Stop  
7F11-1 Seat Front  
7F8-7 Front**

Position the Flaperon Stop on the center of the lightening hole in the Seat Front.



**7F10-3 Front Bottom  
Longeron**

Cut the Front Bottom Longeron to the proper angle. The front is 30mm and the rear is 100mm (7F10). Position the front Longeron 400mm apart or 200mm from the center. This is very important for the engine mount to fit properly.



**7F10-3 Front Bottom  
Longeron  
7F9 Cabin Sides**

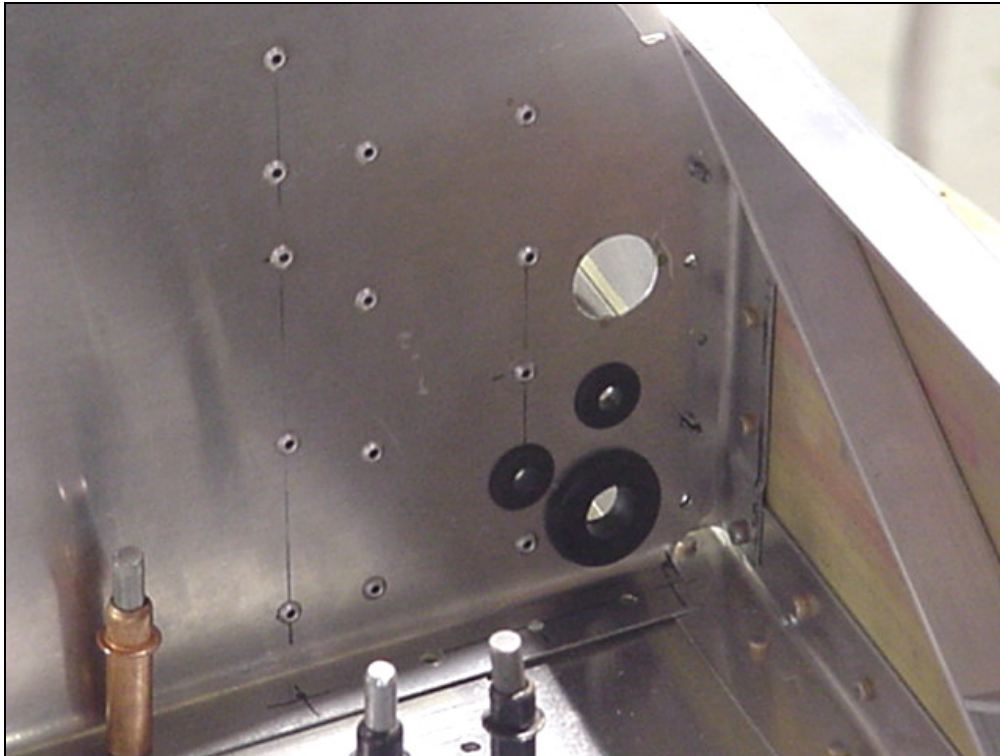
The rear part of the Longeron has seven rivets with the pitch of 15mm. Drill and cleco. The rear is 880mm from longeron to longeron (7F10) for the width.





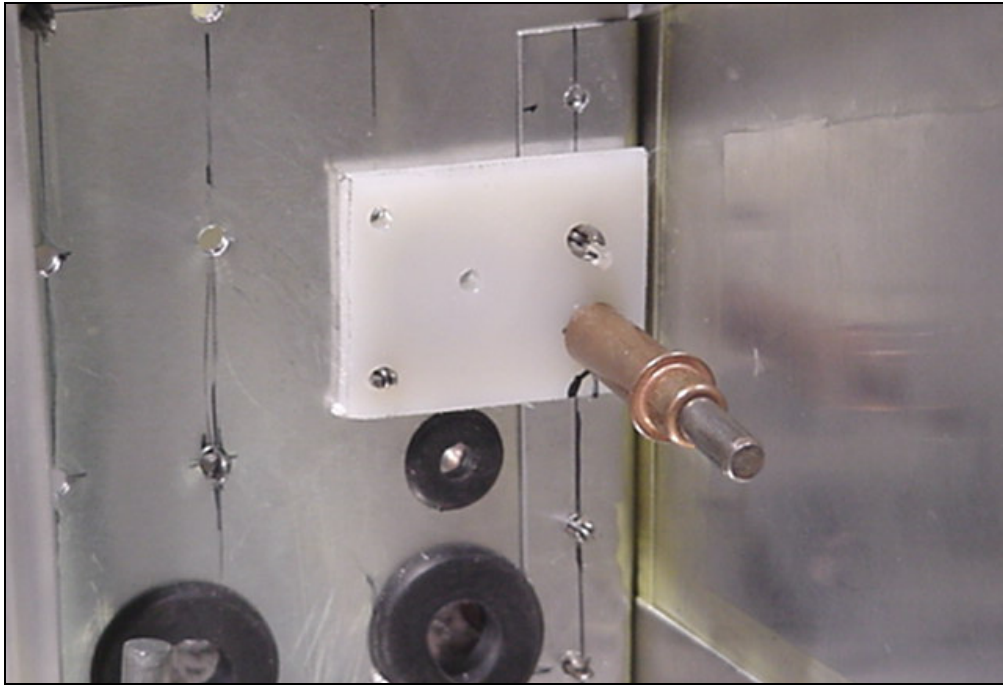
**7F10-1 Bottom Channel  
7F10-2 Channel Doubler**

Disassemble the forward Fuselage and debur. The Channel Doubler 7F10-2 is riveted from the inside of the Bottom Channel 7F10-1. The rest of the forward Fuselage can now be riveted together.



**7F11-1 Seat Front  
7F11-1A Seat Front  
Doubler**

Installing the Plastic Fairlead for the Rudder Cable.



**7F11-1 Seat Front**  
1/8 Plastic Fairlead

Cut a piece of Plastic Fairlead 45X35 drill and rivet. In the center of the Rudder Cable hole, drill a 1/8 hole for the cable.



Forward Fuselage ready for joining to Rear Fuselage.