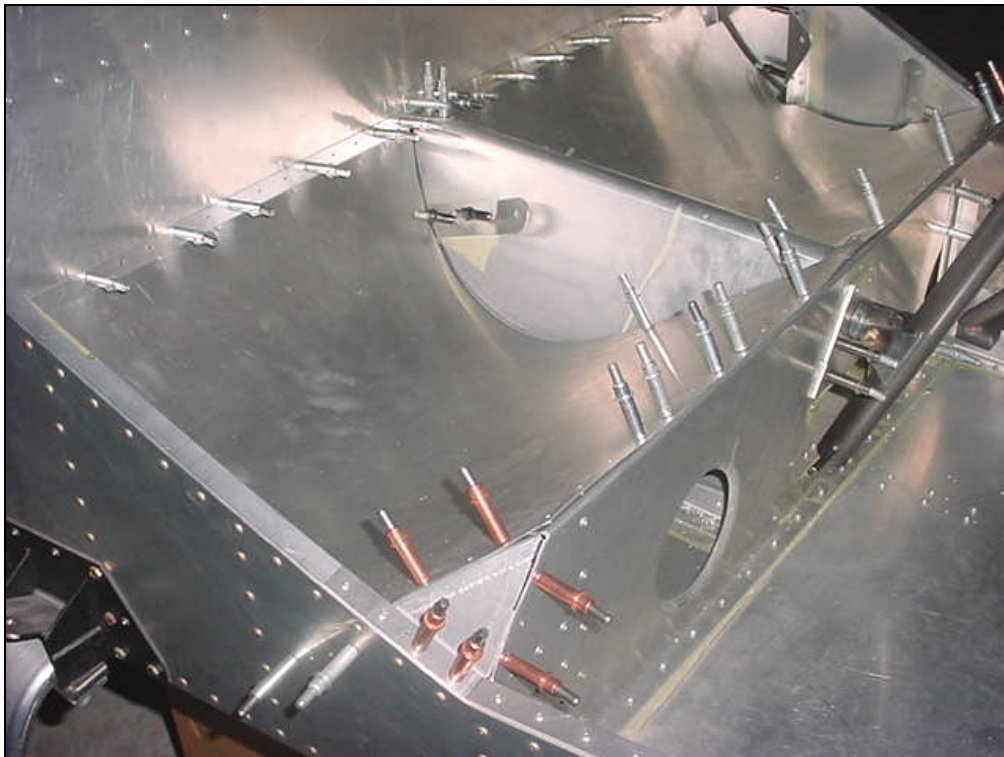


Top view: Tunnel 7F11-4 between the Seats.



STOL CH701 cabin



STOL CH701 Seats

CHECK: If the Gusset 7F11-7 is supplied bent; hen it is best to install the Gusset before the Seat 7F16-1. Otherwise, install the Seat than the Gusset.



'L' Angle, detail of bottom aft corner
Ref: 7-F-16

'L' Angle riveted to the side of the Tunnel.
The bend of the 'L' Angle is approximately 20mm up from the Floor

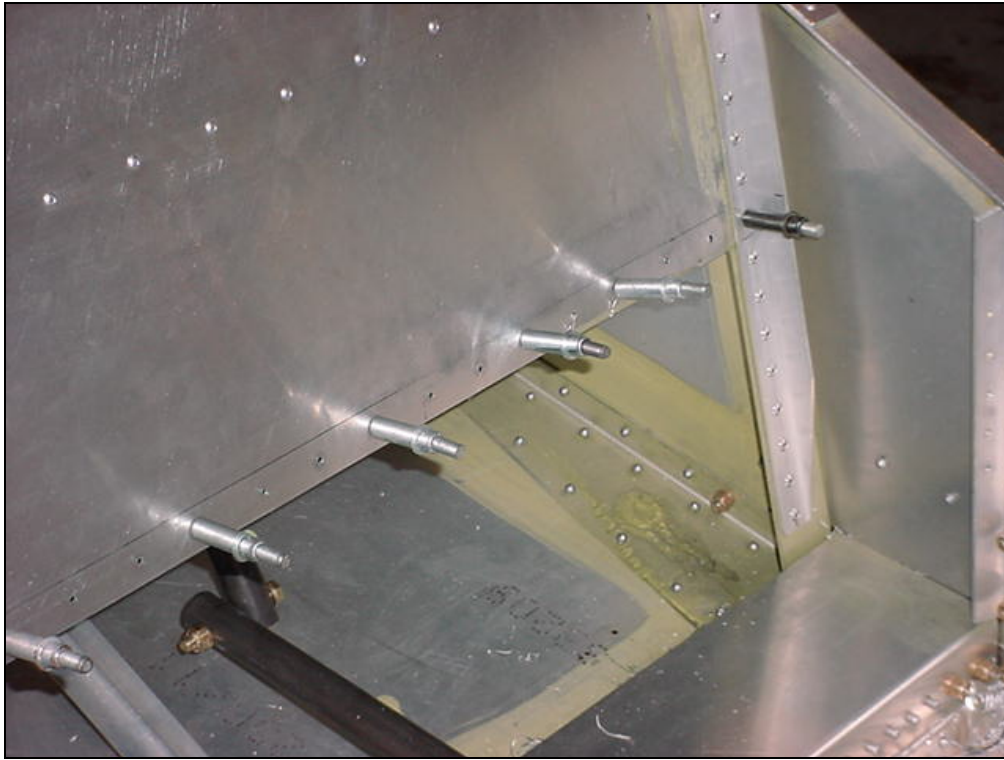
Bend the 90degree flange of the 'L' Angle **65 degrees closed**.



ORIENTATION: Bend is along the top

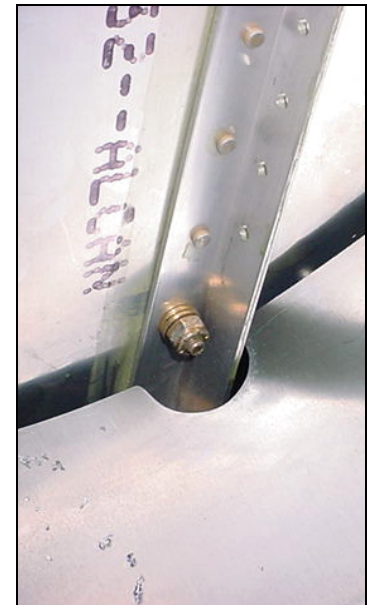
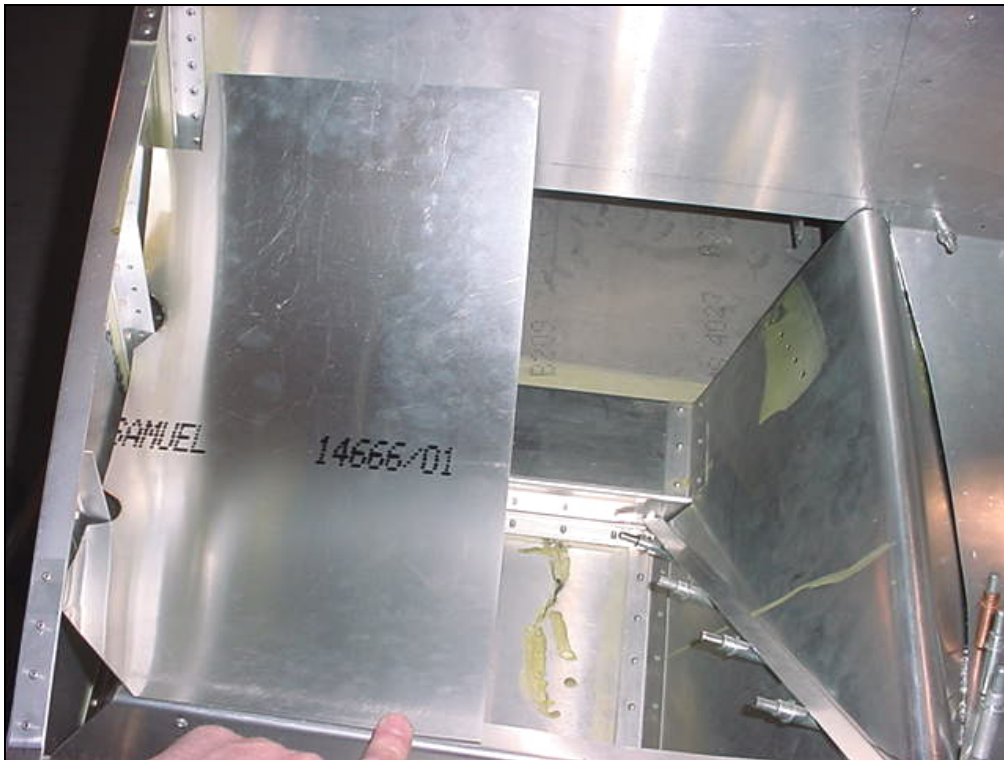
A4 PITCH 40

Drill the 'L' Angle to the side of the Tunnel 7F11-4



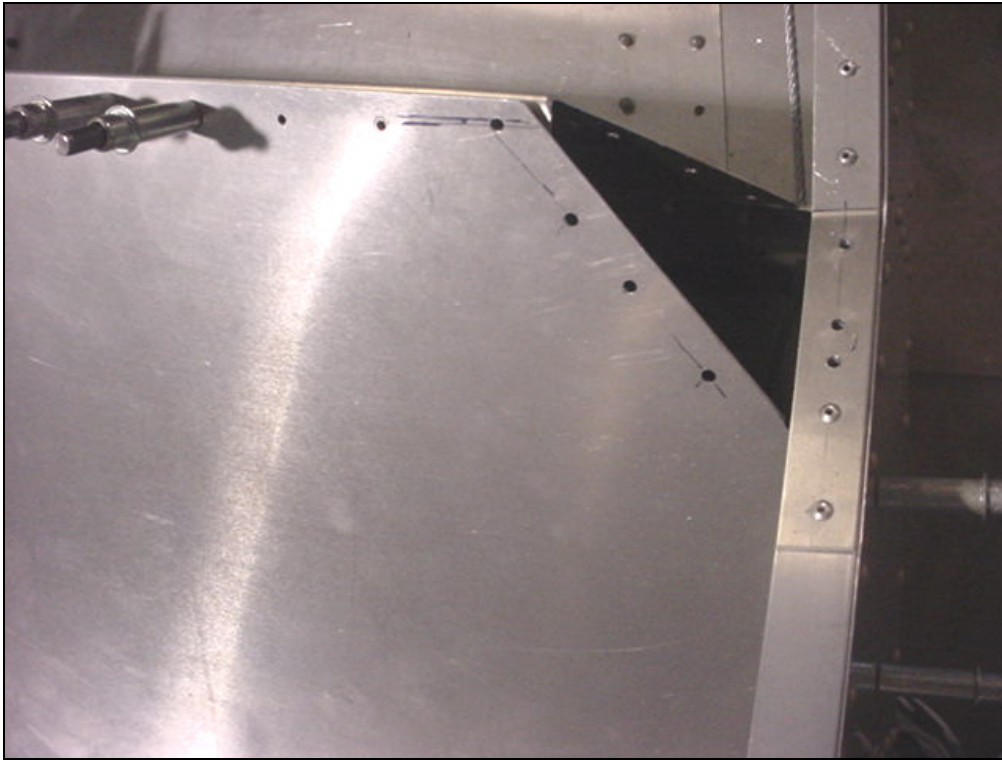
LAYOUT
 Mark a reference line
 20mm up from the bottom
 edge of the Seat Back
 7F6-4

TIP: The 'L' Angle along the bottom of the Seat Back will be back drilled after the Seats 7F16-1 have been positioned.



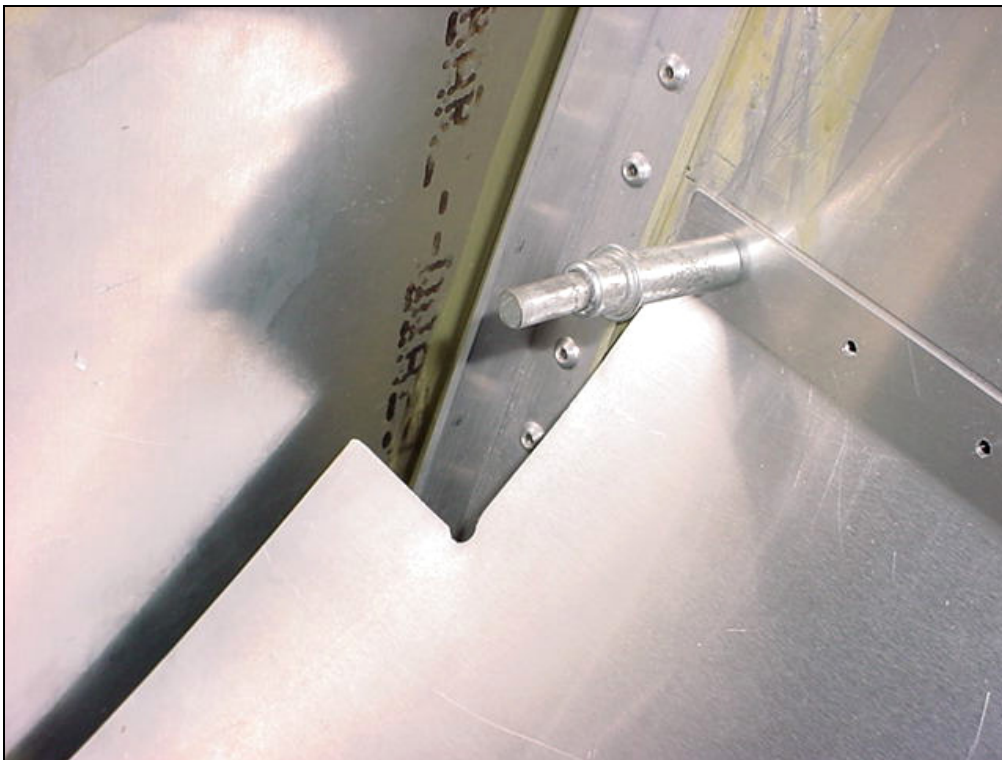
Cutout to make room for the vertical stiffeners on the Cabin Side.

SUGGESTION: Make a half template of the seat (from construction paper or scrap material) Photo of the outboard template: Reference: the front is flush with the Seat Front.



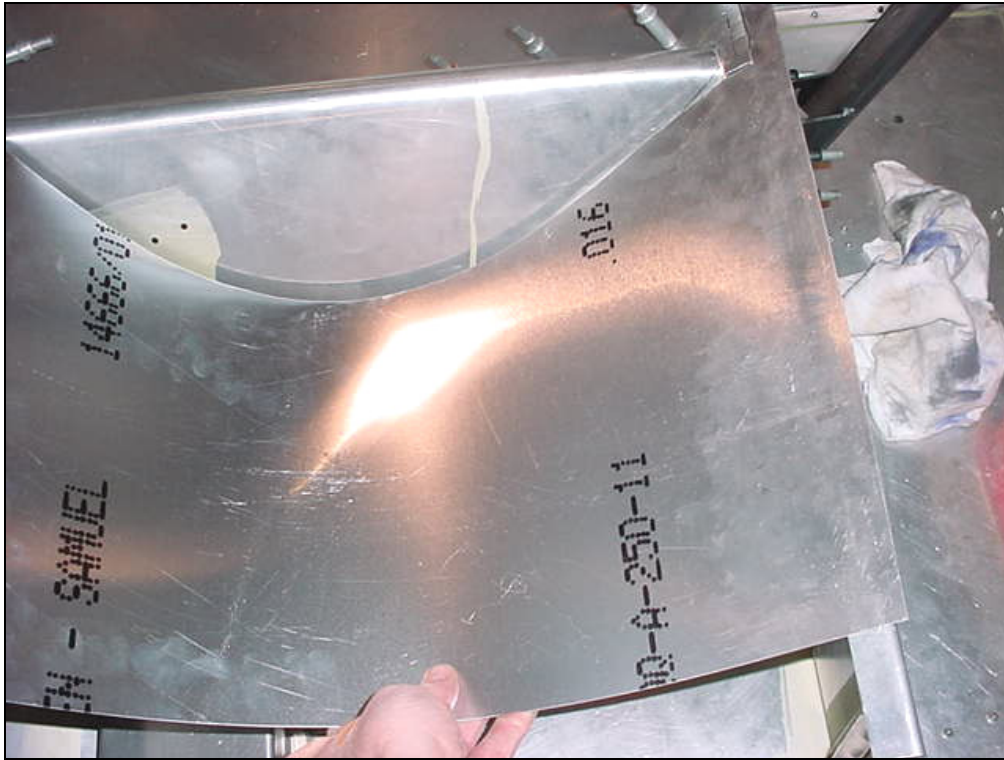
Detail of front outboard corner

70mm measured long the top of the Cabin Side from the Seat Front to the edge of the Seat.



Detail of rear outboard cutout: 75x32mm

The bend the Seat is even with the bottom edge of the Seat Back.



Trial fit template to determine the inboard cutout on the Seat 7F16-1

Half template: a “smaller” seat template is like a cross section. Keep trimming back until the top makes contact with the side of the Tunnel 7F11-4



Detail of aft corner

Leave a 3 to 5mm gap between the inboard edge of the Seat and the Tunnel



Tape the I/B and O/B template together. Use the template to trim the Seat 7F16-1



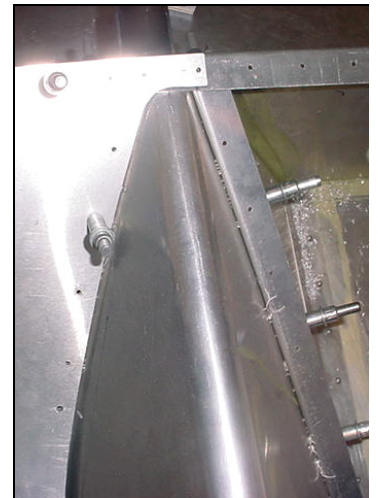
A4 PITCH 30
7F16-1 to 7F11-1

Drill & Cleco the front of the Seat to the top flange of the Seat Front



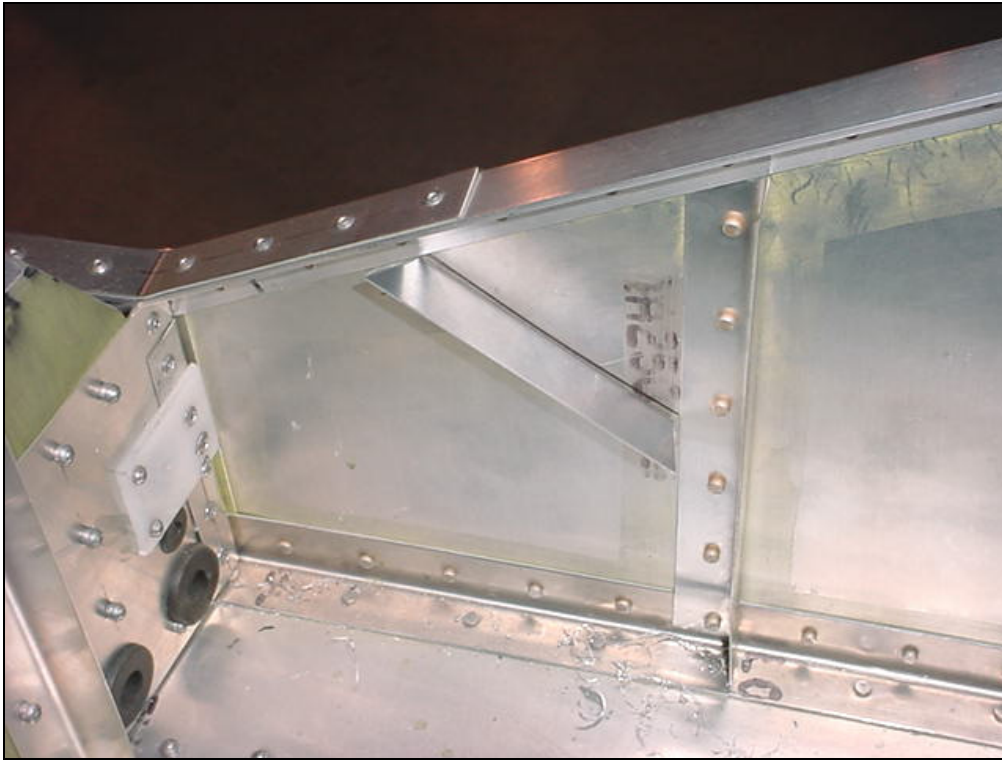
A4 PITCH 30
7F16-1 to 7F6-4

Drill & Cleco the aft flange of the Seat to the Seat Back.
Edge distance: the rivet line is 10mm up from the bottom edge of the Seat Back.



A4 PITCH 40
7F16-1 & 'L' Angle

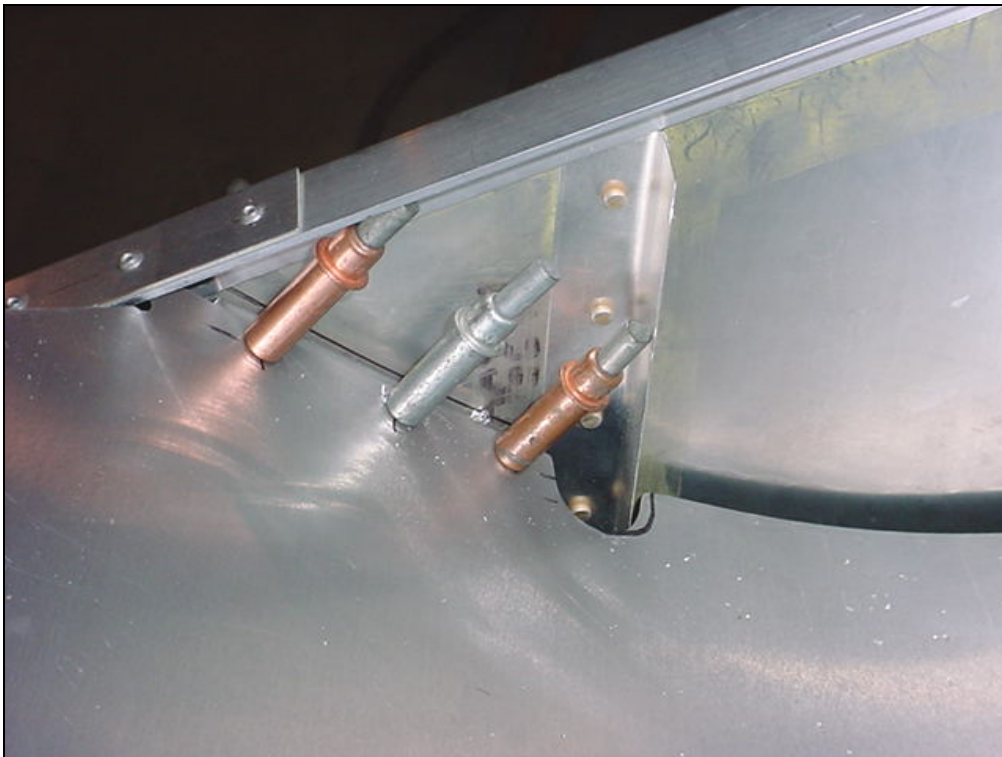
Drill & Cleco the inboard edge of the Seat to the 'L' Angle.



Trace along the Seat to make the position on the Cabin Side.

A4 PITCH 40
 'L' Angle & Cabin Side

Drill and cleco a short 'L' Angle to side Cabin Side, the bend is along the top even with the traced line.



3 RIVETS A4
 7F16-1 & Short 'L'

Let the Seat sit. Drill & Cleco the outboard side of the Seat to the short angle on the Cabin Side.

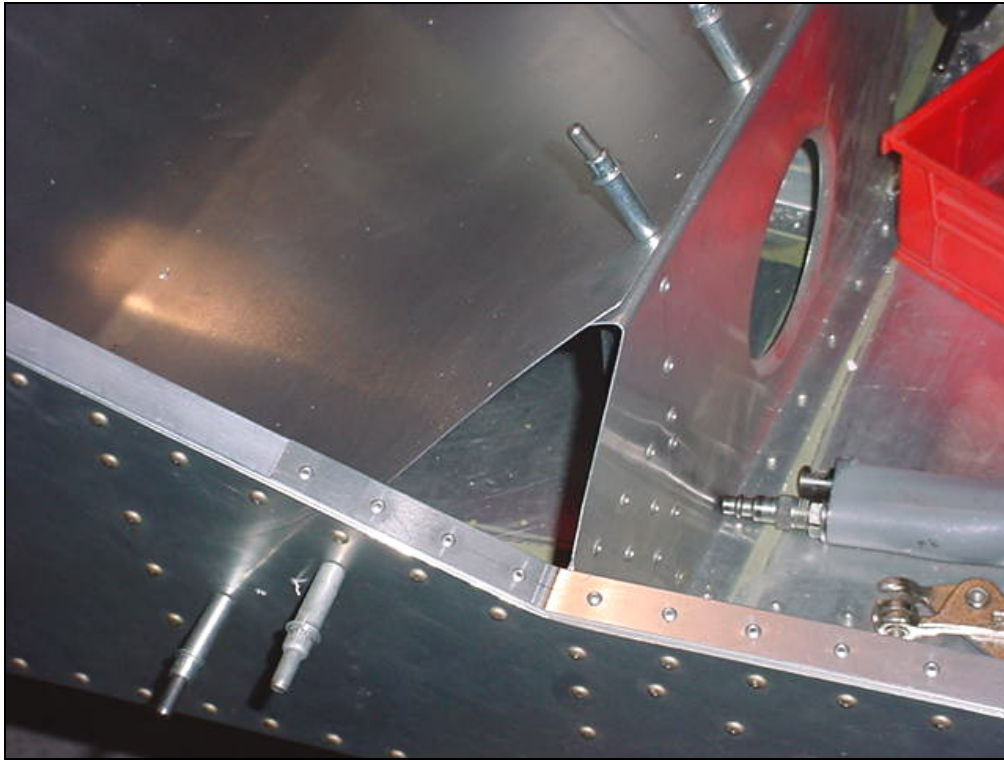
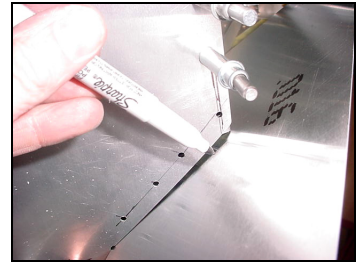


Photo of right side.
The Gusset 7F11-7 closes the opening between the Cabin Side, the Seat Front and the Seat.



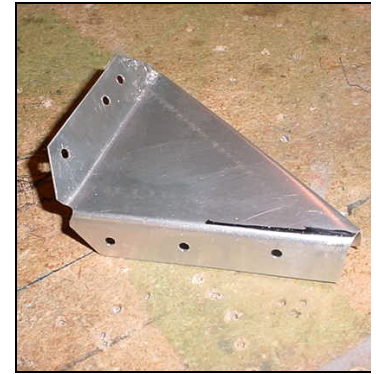
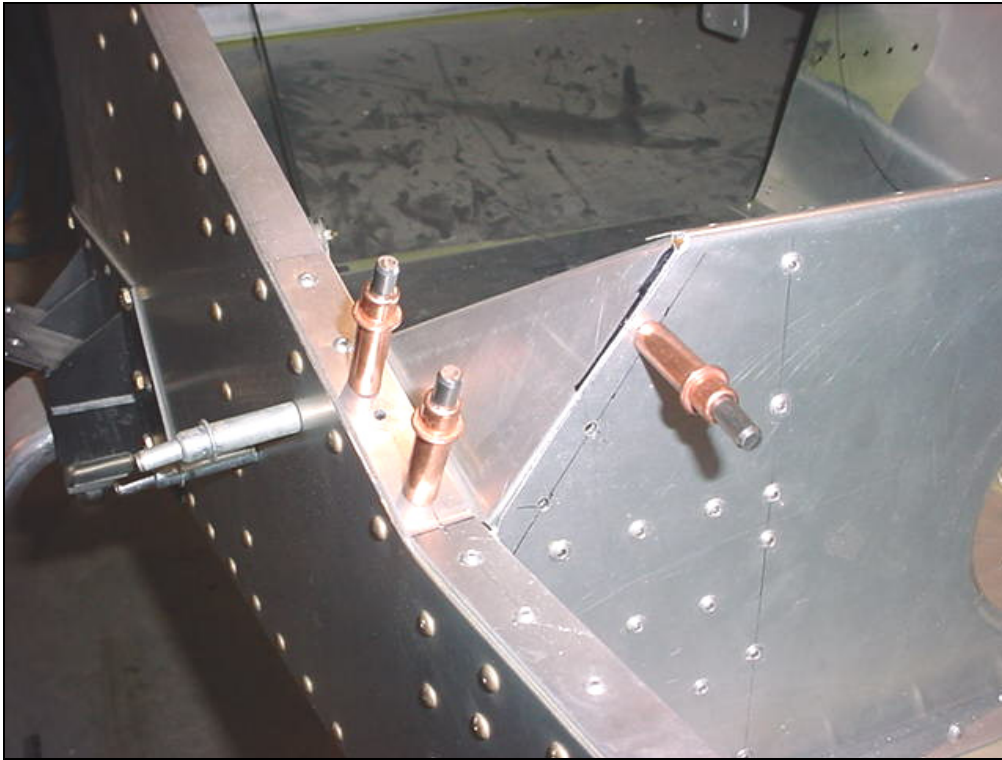
Layout a piece of flat material over the opening, trace along the Seat and the Seat Front.



Gusset, left side

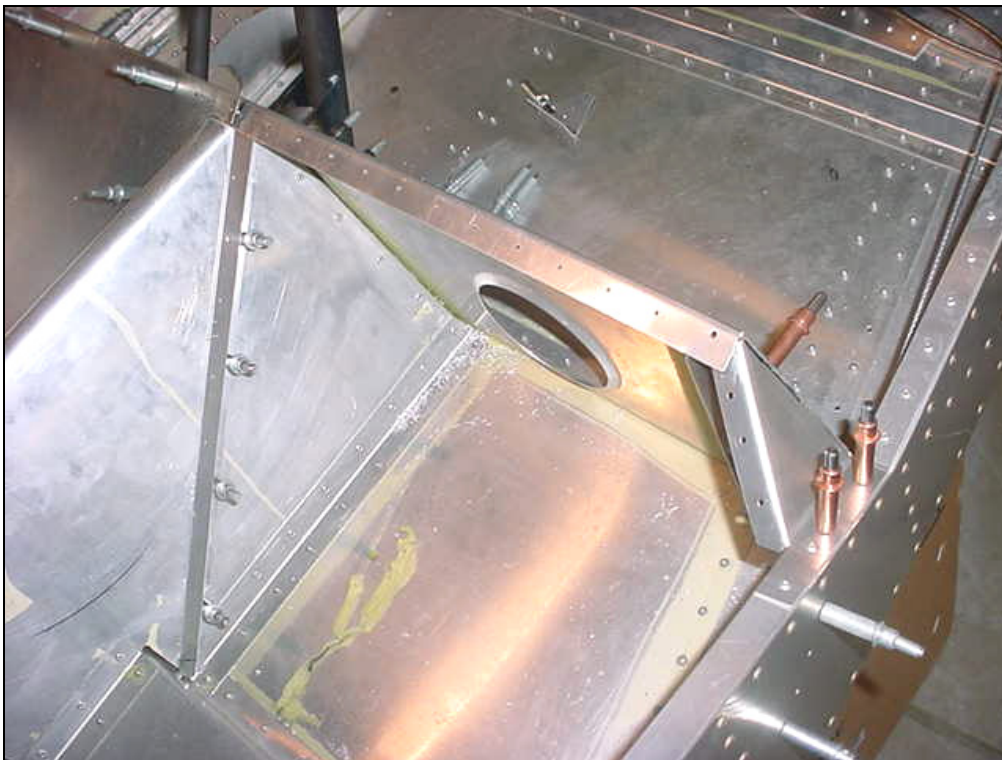


Top view of left side



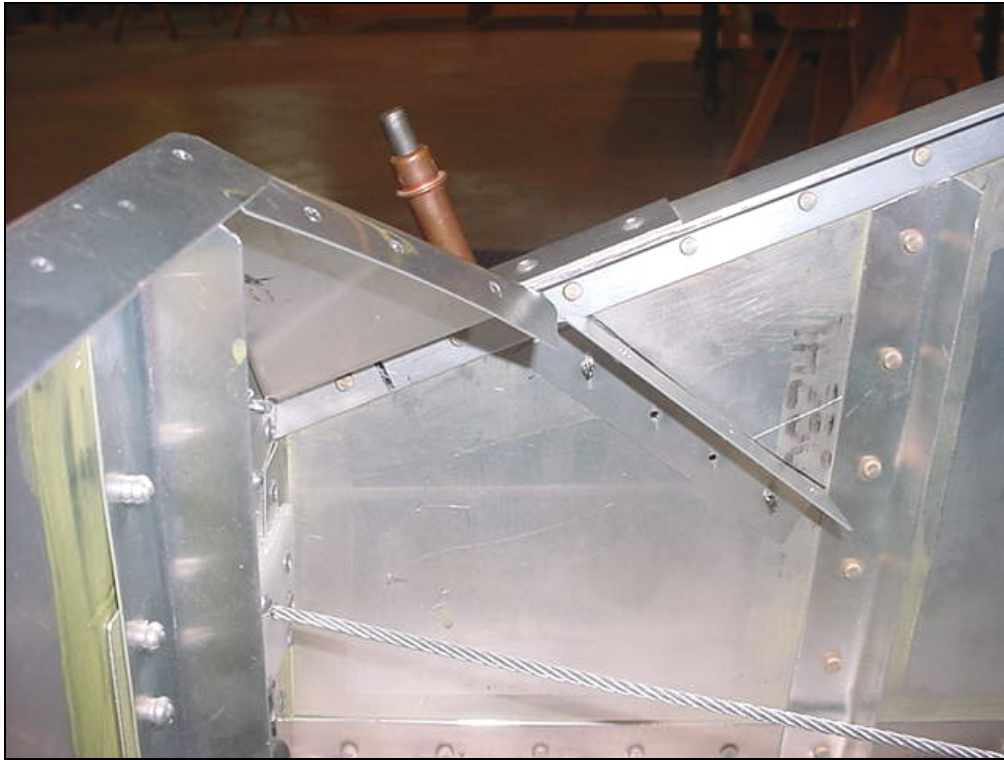
Gusset 7F11-7
Front flange

The front flange overlaps behind the Seat Front 7F11-1
The side flange fits underneath the Cabin Side.

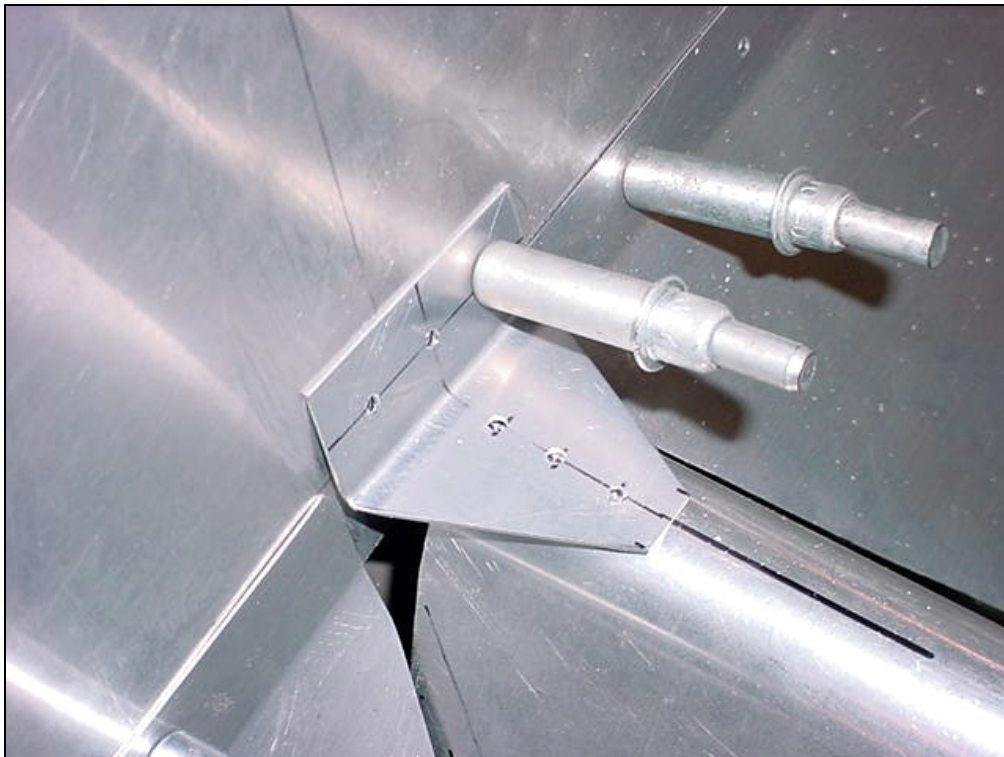
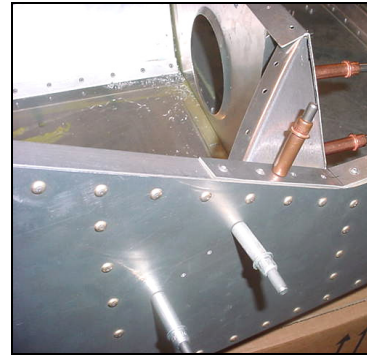


Gusset 7F11-7
Rear flange

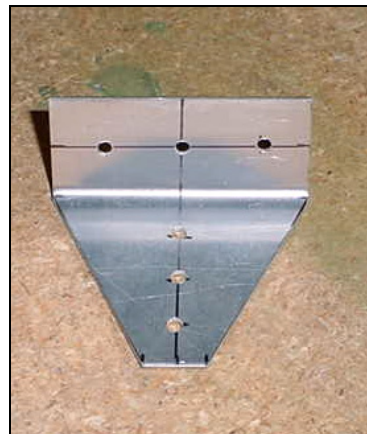
The aft flange rivets to the Seat



Detail of right side: Gusset and short 'L' Angle

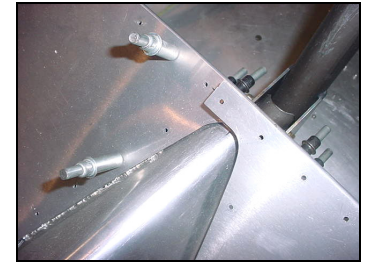
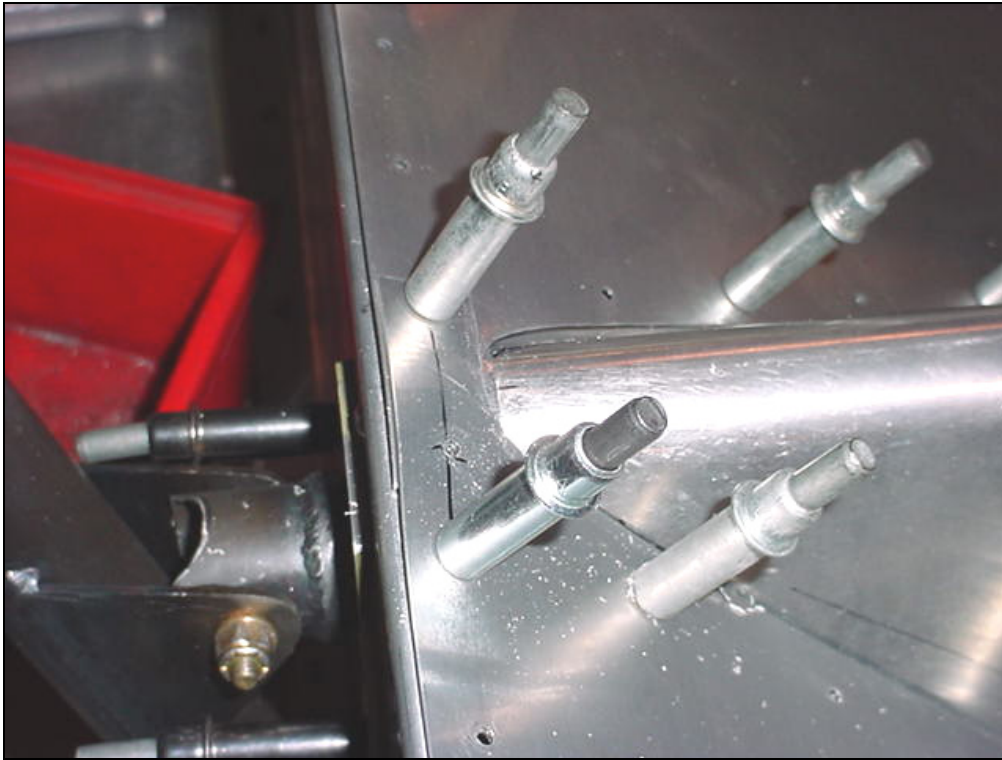


Tunnel Gusset to connect the top of the Tunnel to the Seat Back



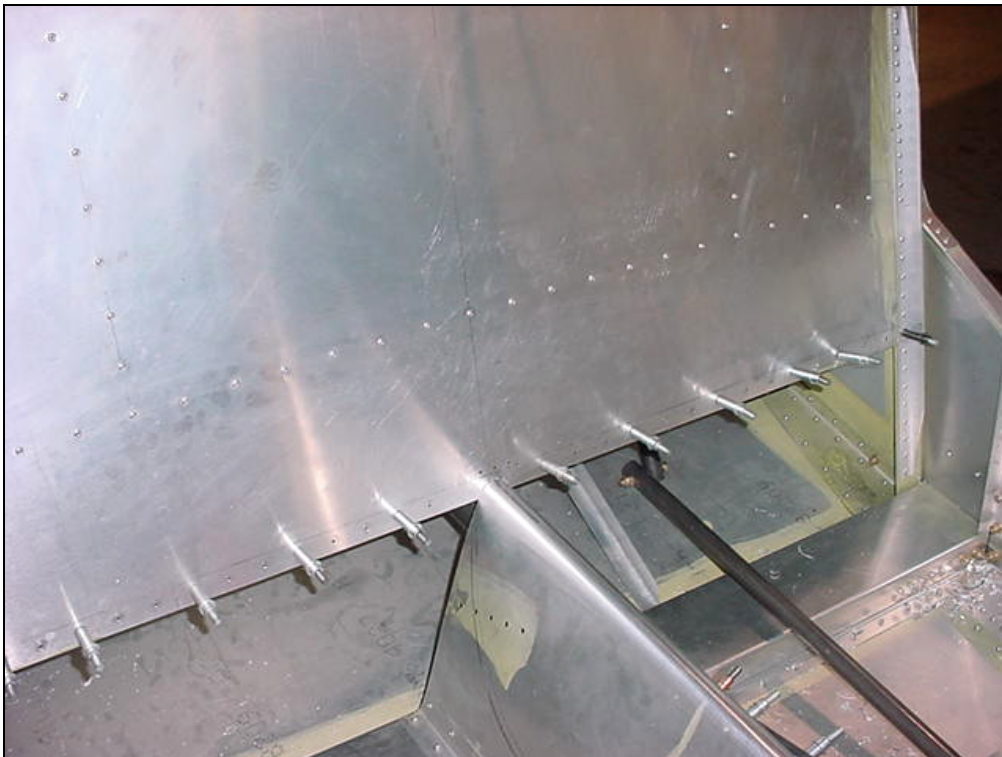
**TUNNEL GUSSET
7F16-1A**

6 RIVETS A4



Overlap of the front left and right seats

Rivet line through the top flange of the Seat Front.



Back drill the 'L' Angle through the hole in the Seat Back (holes for the seat)

'L' Angle: length = 1025mm
Clamp the 'L' Angle on the backside of the Seat back.



Viewed from inside the fuselage looking forwards.
'L' Angle along the bottom of the Seat Back.
ORIENTATION: the bend is towards the bottom.



The ends of the 'L' Angle overlap on top of the Upright 7F11-5