



**HORIZONTAL TAIL
BELLCRANK
7C1-1**

**BELLCRANK BLOCK
7C1-2**

Layout the 4 holes on the
Bellcrank

First drill the 5/16" hole in 7C1-1 and 7C1-2. Bolt the two parts together with a 5/16" bolt, then drill the #20 hole for the solid rivets through both parts.



ORIENTATION: The 1/4" hole is at the bottom front, the Block 7C1-2 is riveted on the left inboard side of the Bellcrank 7C1-1 (photo of right side outboard side)



Bolt 7C1-2 to 7C1-1
before drilling the two #20
holes.



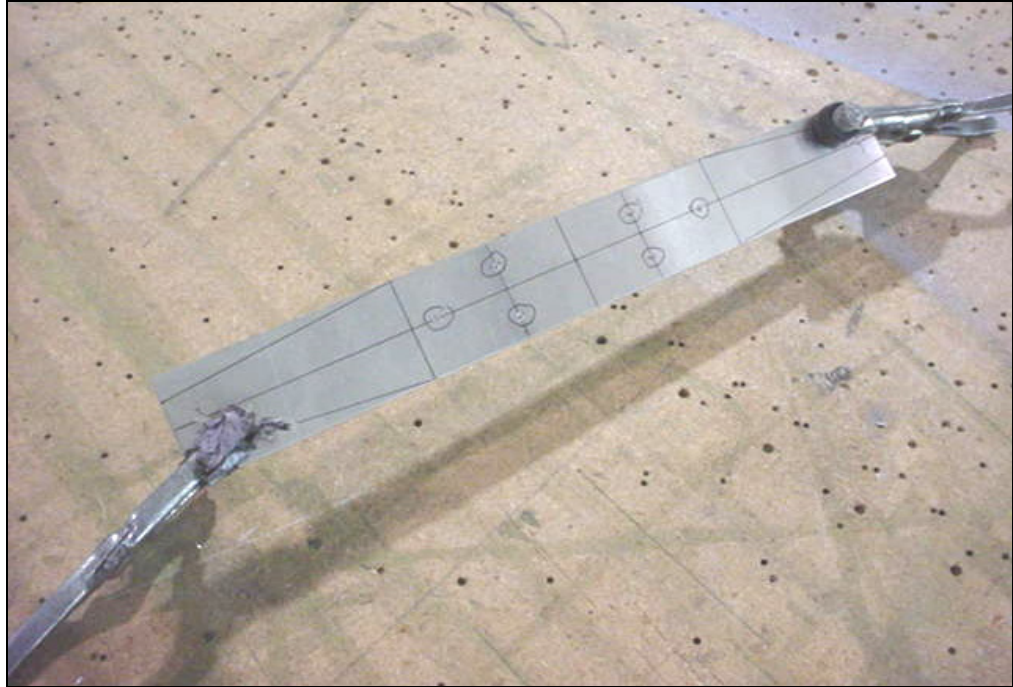
**FLAPERON
BELLCRANK
7C1-4**

**BELLCRANK SPACER
7C1-5**

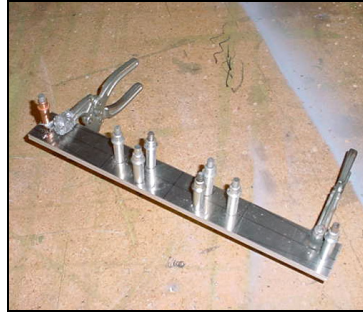


Parts as supplied

Part after they have been cut, drilled and deburred

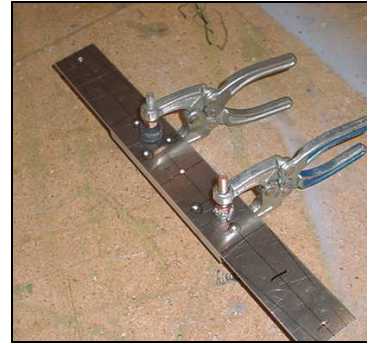


LAYOUT: Mark the centerlines and shape of the part. Layout the holes and the 6 rivets.



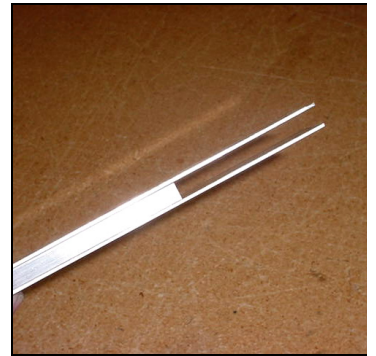
CLAMP: Clamp the 2 pieces together, drill and Cleco.

Wait to open up, drill the pilot hole to a 3/4" hole until after the Spacer is installed.



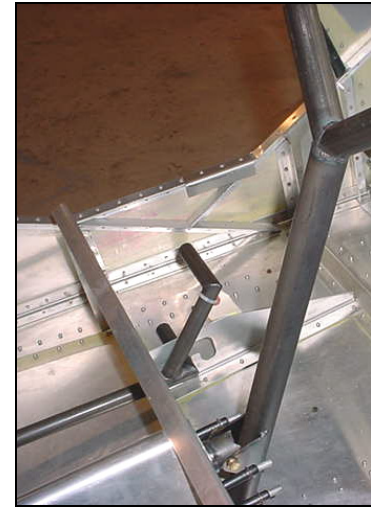
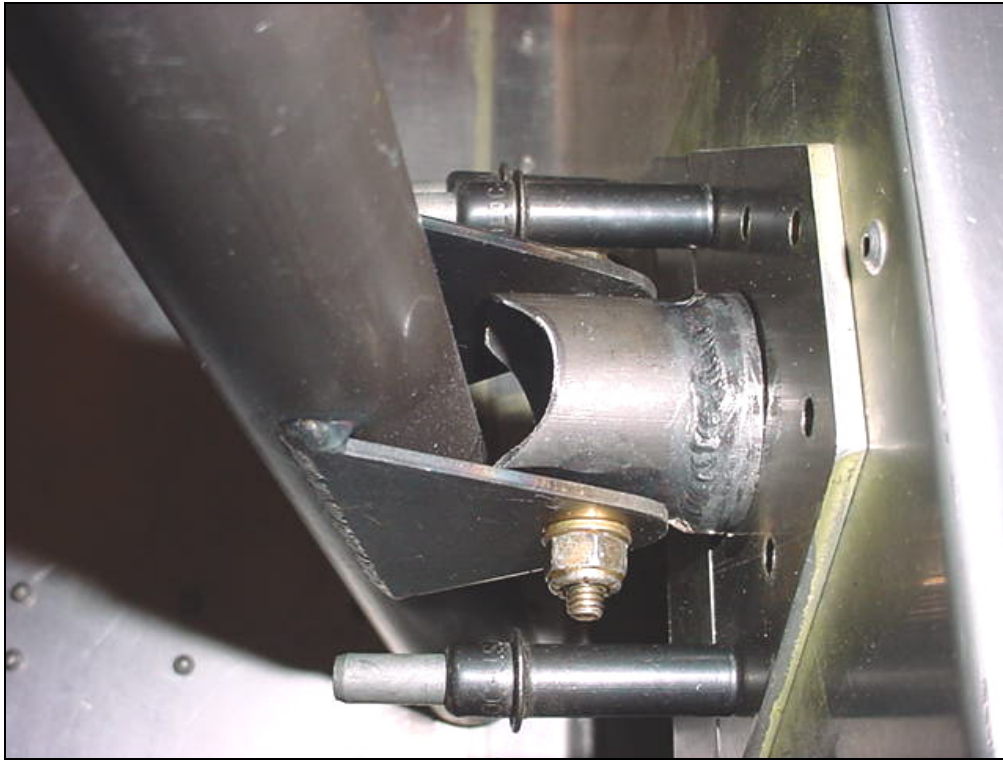
Line up centerlines; then clamp the Spacer 7C1-5 on the backside of the Bellcrank 7C1-4.

Saw off the corner of the Spacer.



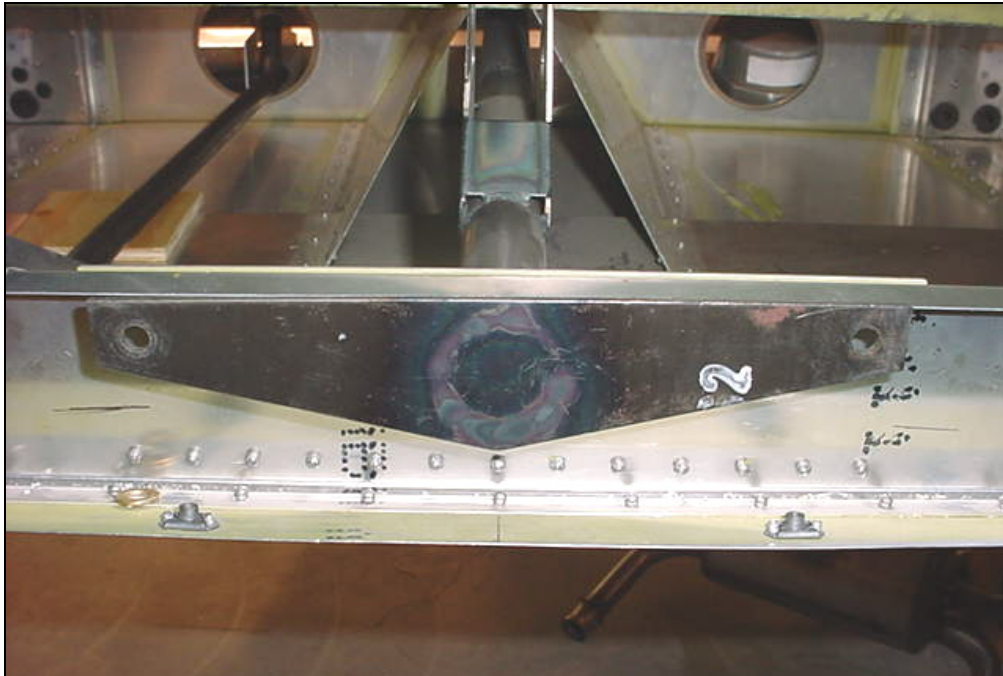
Top view

Drill the 3/4" hole through the 3 pieces.



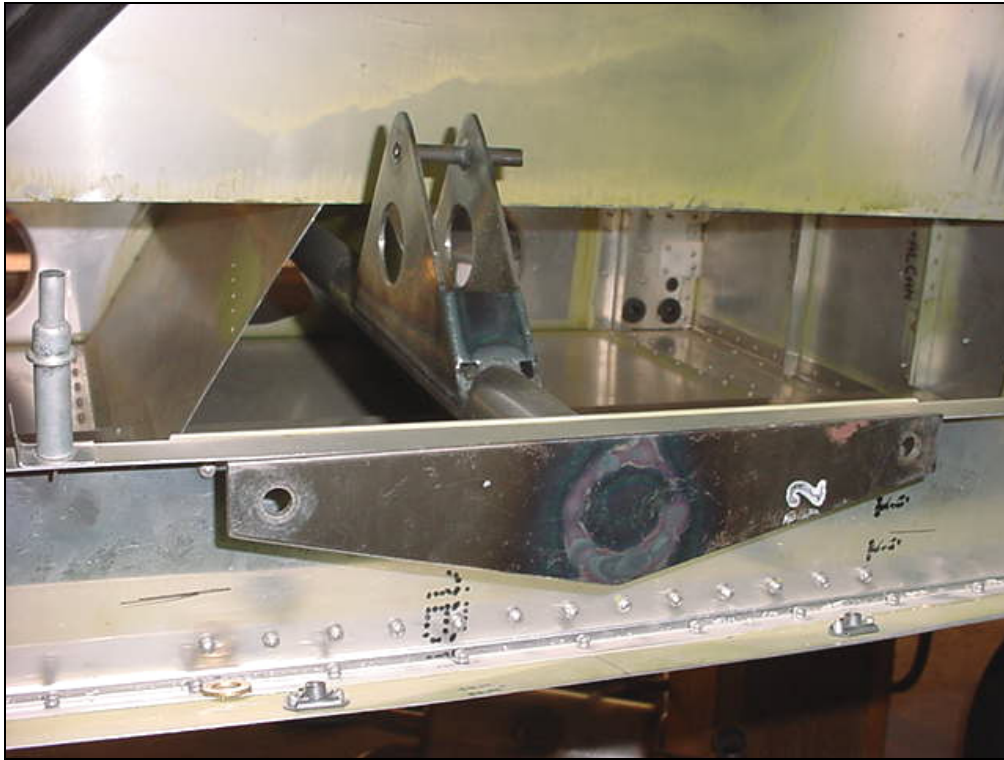
**Control Stick
7C2-1**

Front Bearing Top 7F11-2 on the backside of the stop ring welded on the Torque tube 7C2-2.

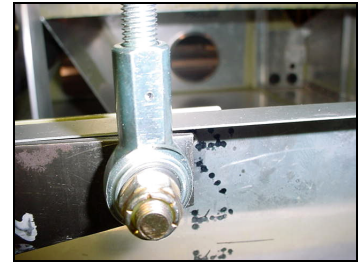


Drill the two 5/16" hole for the Bolt AN5.

The top of the Horn 7C2-3 is installed square to the side of the Torque Tube.



Mark a reference along the front edge of the 1.125 Tube 7C2-3 on the side of the Torque Tube 7C2-2.
 CHECK for gap between the aft edge of the flange and the bellcrank is at least 10mm.



The hole of the bolt is on the front side of the horn.



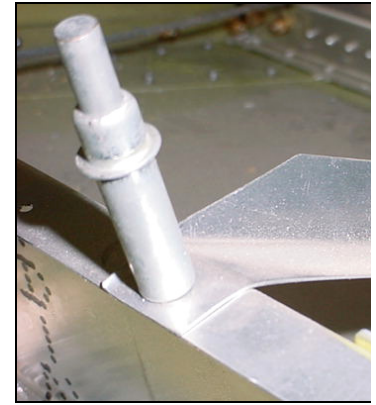
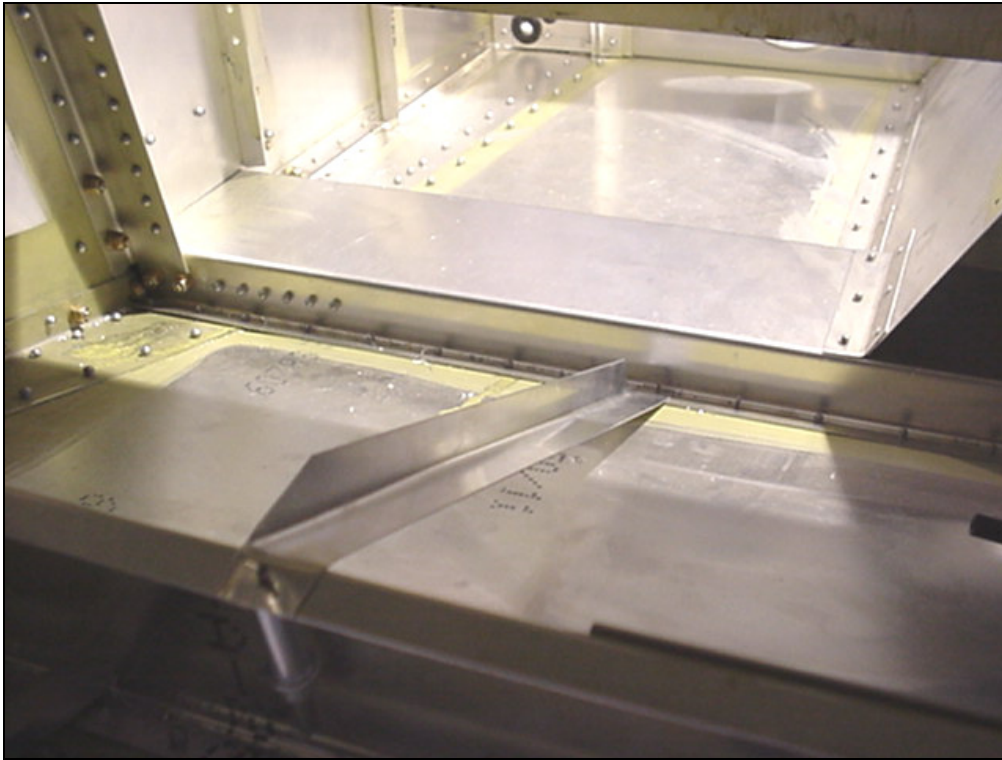
CHECK clearance with head of bolt.



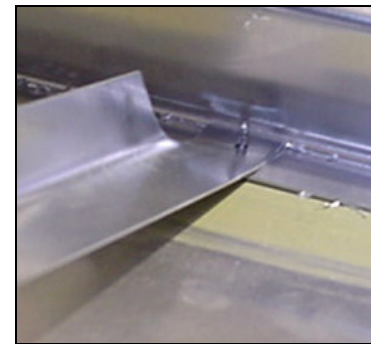
Remove the assembly from the Fuselage to drill the hole for the AN3 bolt.



The hole in the Horn 7C2-3 is already pre-drilled.



Front end

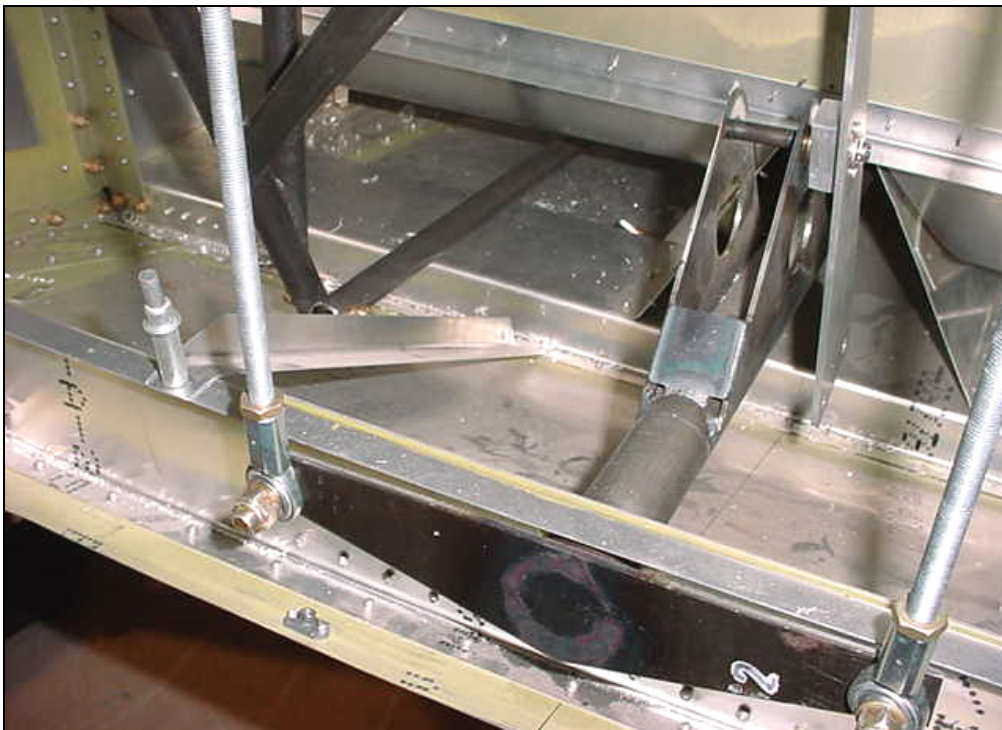


Aft end

Support 'L' angle, Ref. top left diagram on drawing 7-C-2

Front end is riveted to the Top Flange of Bottom Channel 6F6-1
 Aft end is drilled through aft flange of the Bottom Channel 7F10-1

Trim the side flange of the L angle to bend the bottom flange.

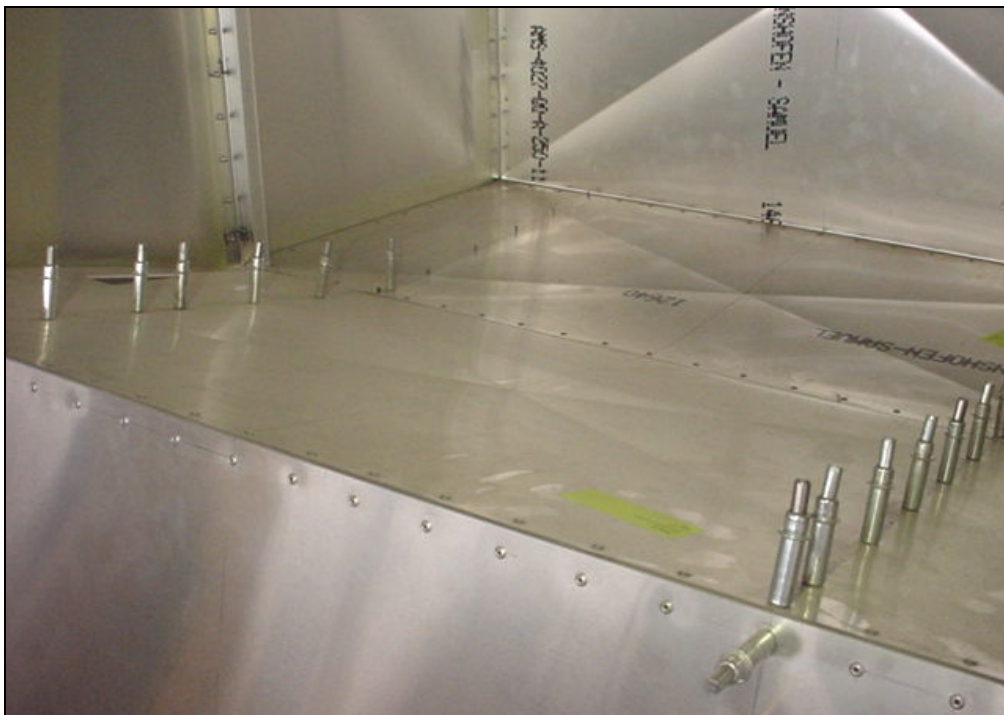


Support 'L' angle to keep the Bottom Channel 7F6-1 square to the Torque Tube.

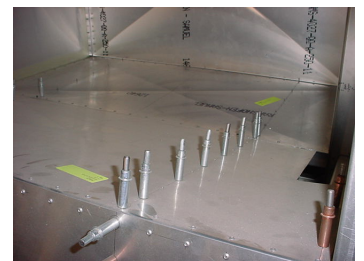


'L' angle on back side of Seat Back Ref 6-F-6

'L' angle on underside of Baggage Floor, Ref. 7-F-6. Check the width with the Flaperon Control Mount 7C3-1
IMPORTANT: The Flaperon Control Bearing 7F6-3 will fit on the inside flange of the 'L' angles.

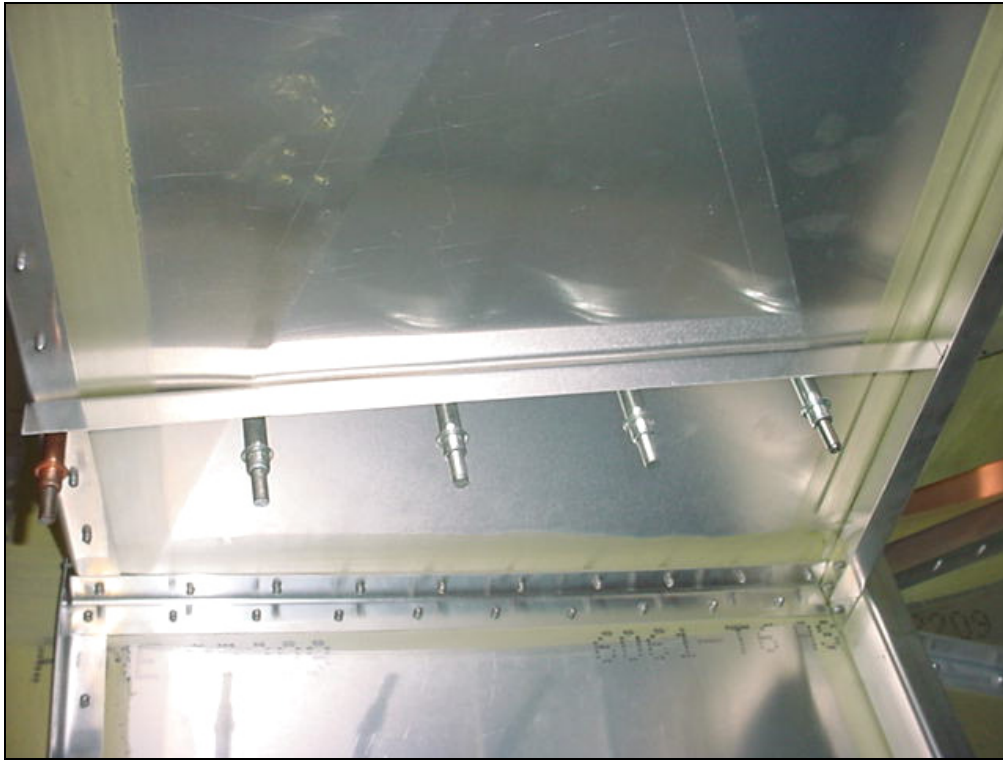


Seat Back



Baggage Floor

Rivets are pulled from the top & front side.



'L' angle
 Length = 390
 Ref. Top right diagram on
 drawing 7-F-6 & 7-F-8

Photo of the Extended Baggage Floor 7F8-9B looking up at the left side.

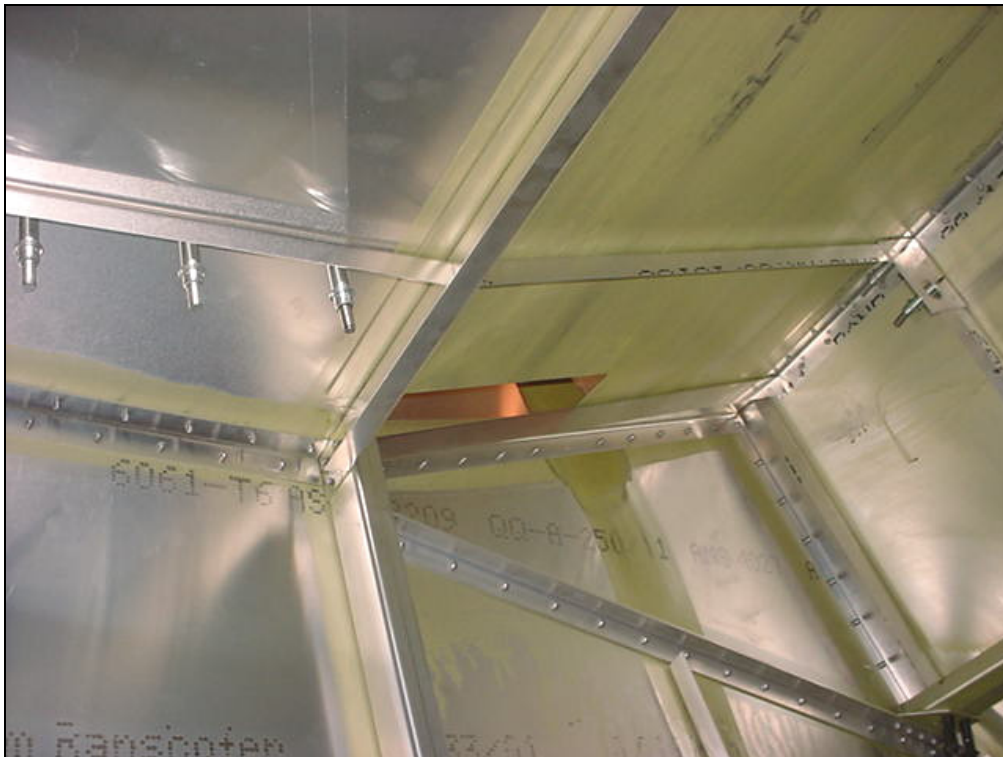


Photo of left side.
 'L' angles on the front and
 aft side of the Zee
 Channel 7F8-10B

Cutout in the Baggage Floor 7F5-7 for the Flaperon Control Rods 7C1-6.
 Front =85mm measured from the O/B of skin to I/B edge of cutout. The
 cutout will be covered by the Rod Cover 7C6-6 (The front flange of the Cover
 is 95mm wide) The back of the cover will be riveted on to the upright 7F5-4