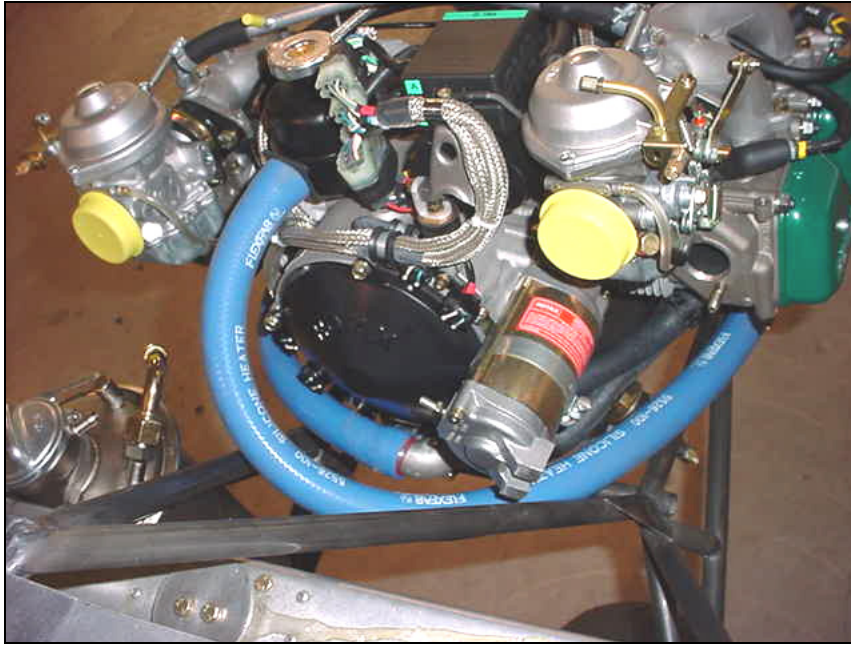
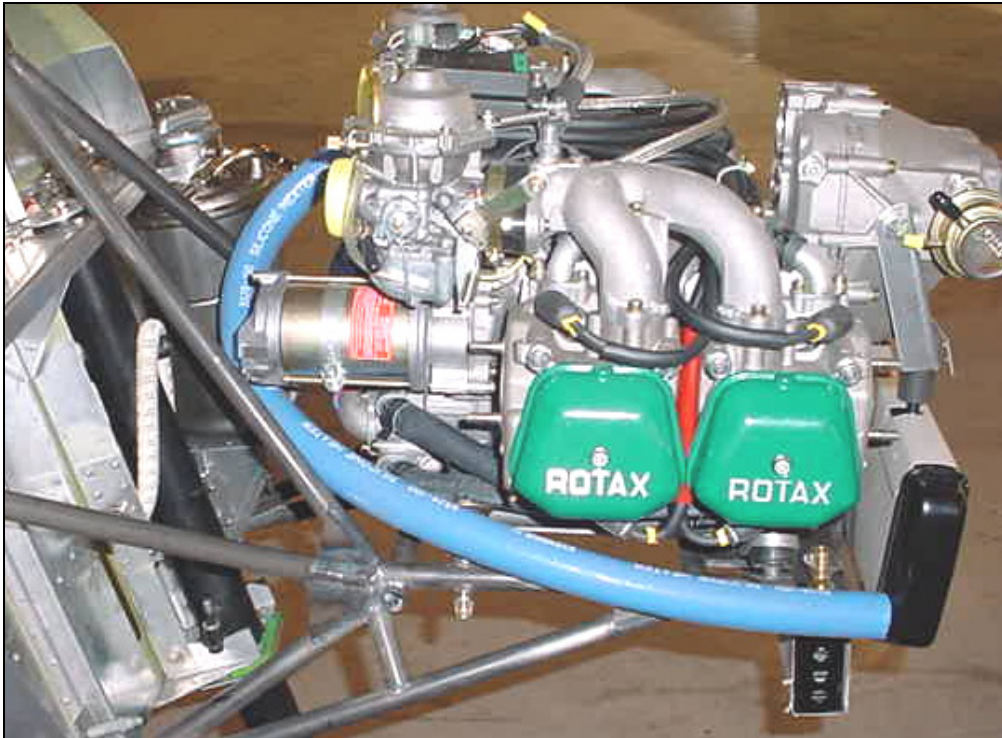


SECTION 3

RADIATOR HOSE



Ref. Rotax installation manual, diagram 15 (section 11-4)

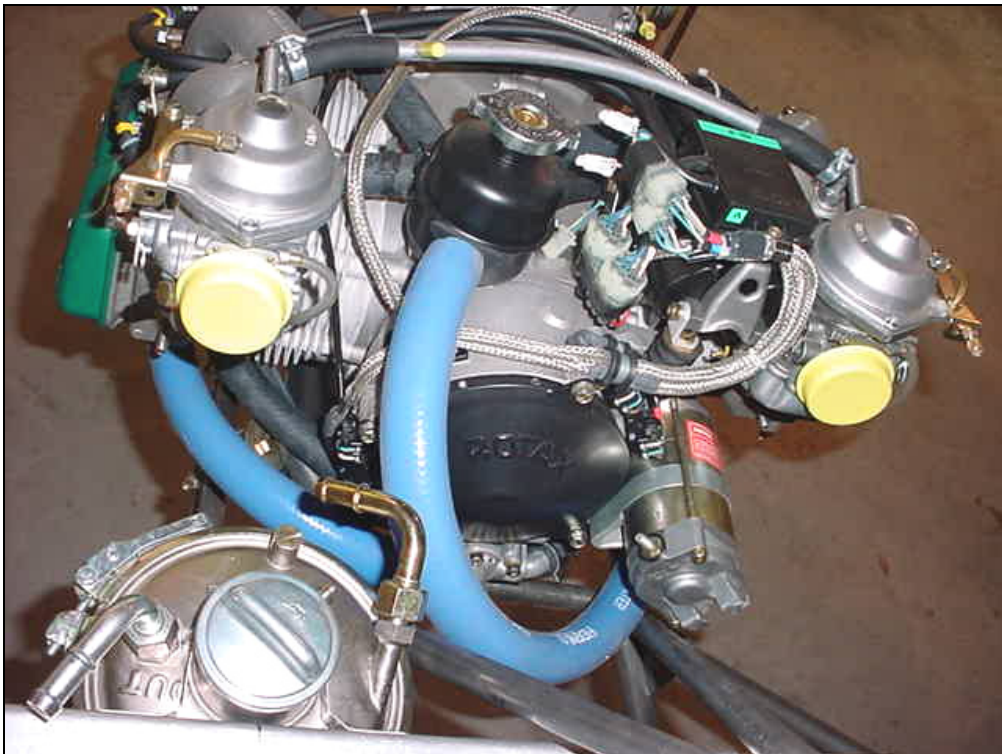


Left and right rad hose

**RAD HOSE
(BLUE SILICON)
P/N FHHS-16**
Total length = 5ft

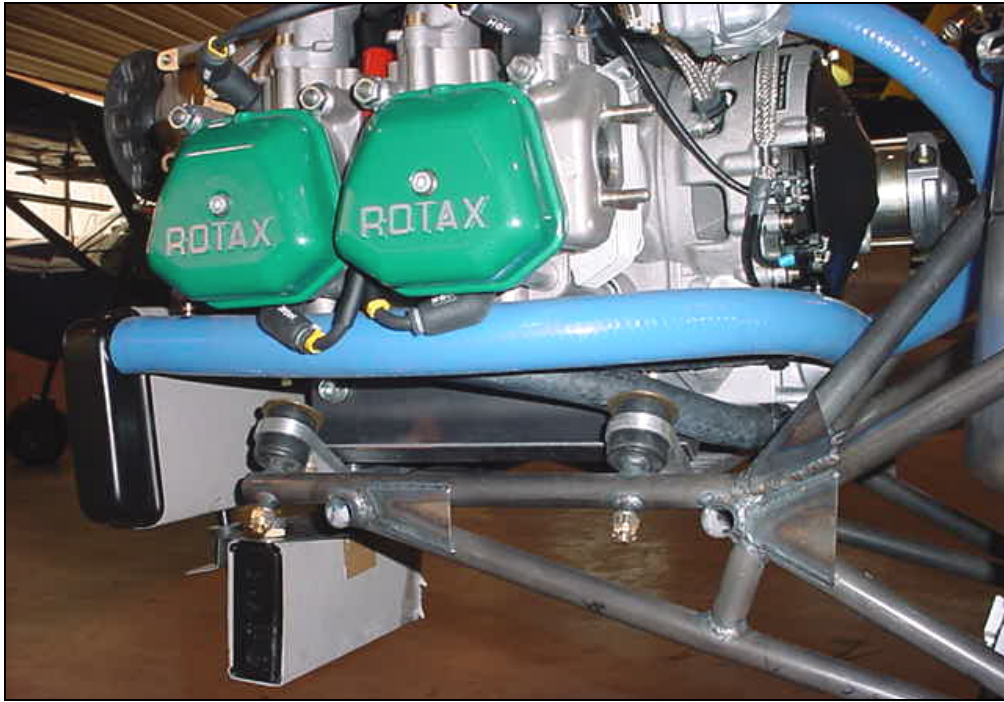
**RIGHT HOSE = 35"
=890mm**

Bottom right of radiator to the pressure reservoir on top of the engine.



Routing of hose on the inboard side of the starter

Pressure reservoir on top of engine.

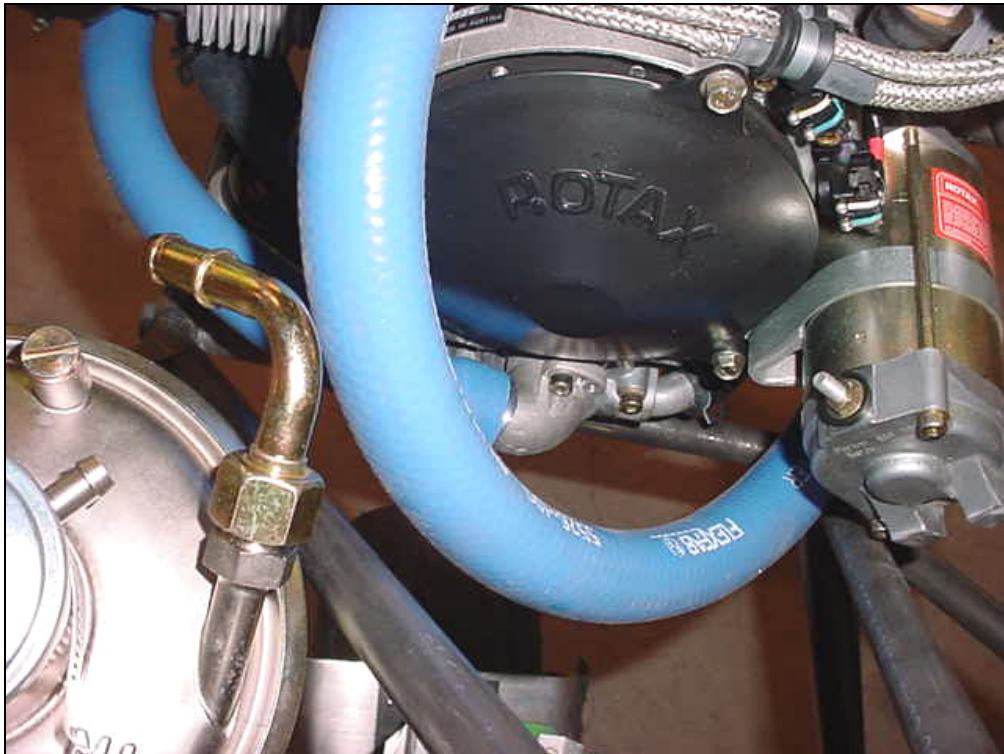


Top left of radiator to water pump.

Note: in this photo muffler is not installed, the hose will have to be secured to keep it from touching the muffler.



LEFT HOSE
= 22" = 560mm



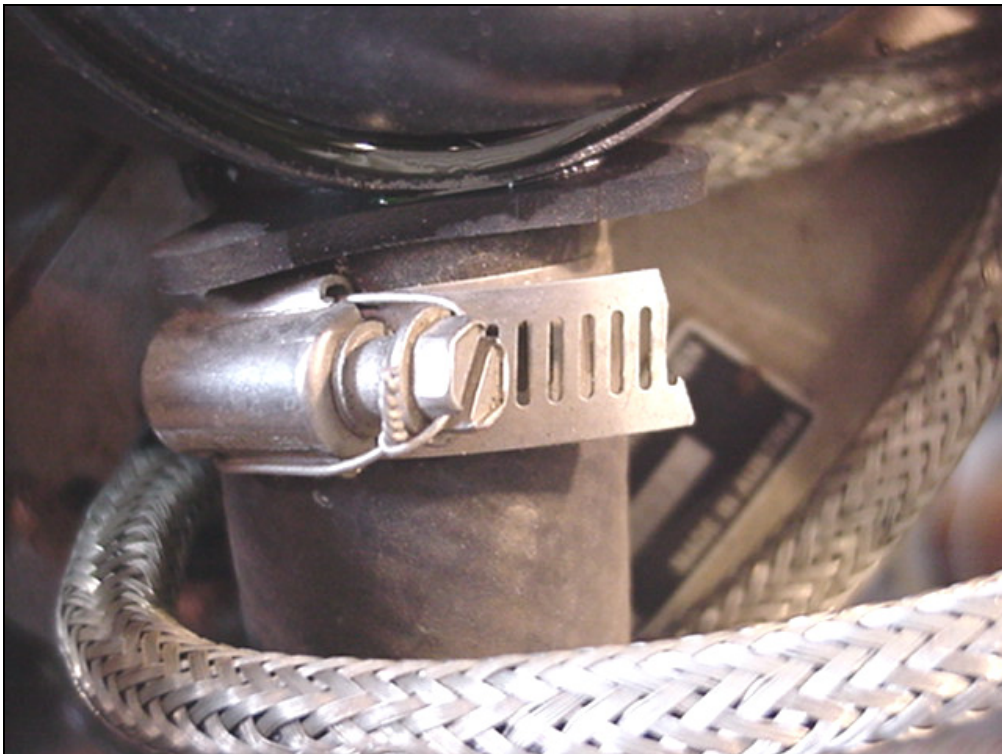
90 degree elbow on the water pump at the back of the engine (at center of photo).



NOTE: This routing does not require any changes to the orientation of the 90 elbow on the water pump.



**HOSE CLAMPS
FHC5-16
Qty =4**



Safety wire hose clamp
through the slot

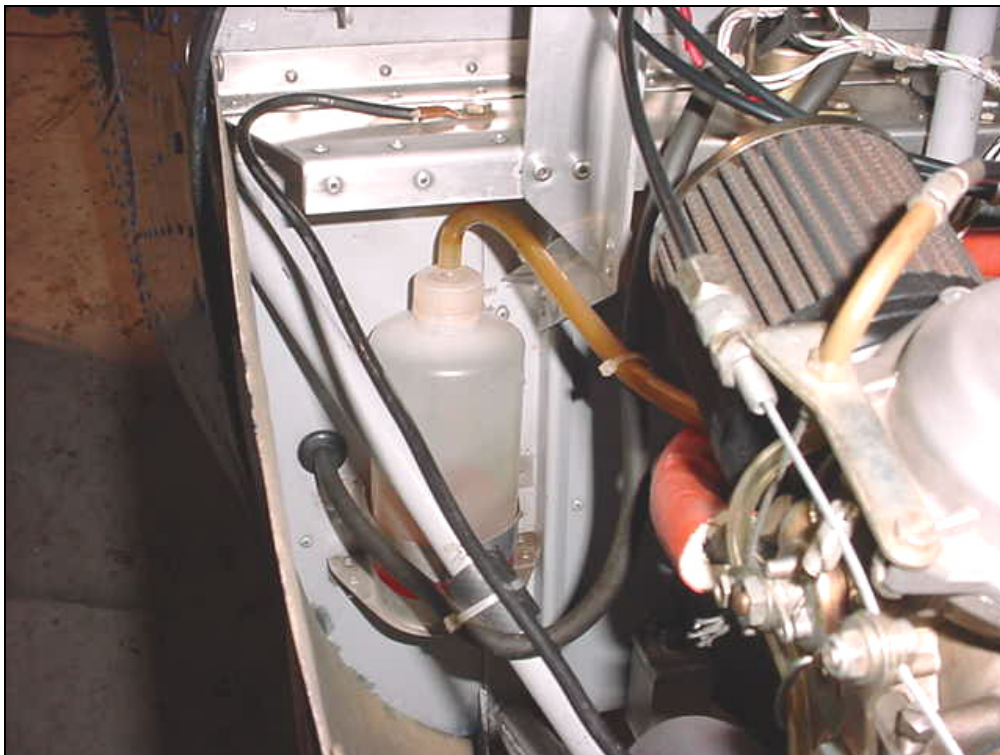
Safety tie all hose clamps.



**OVERFLOW BOTTLE
15173**

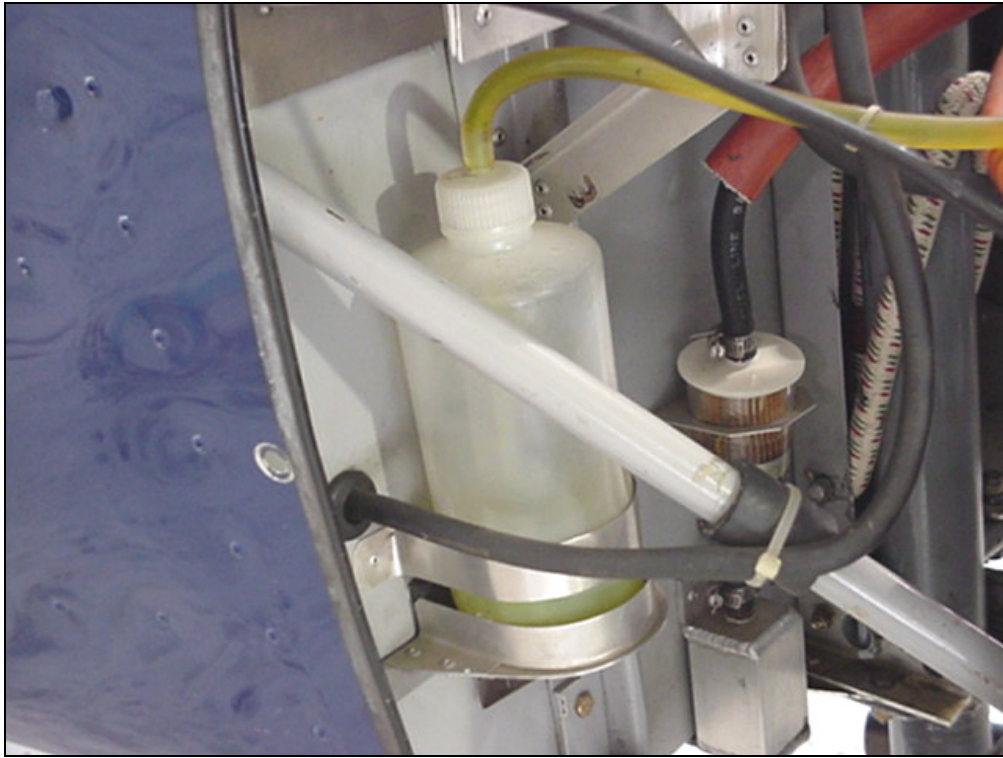
IMPORTANT: drill a #20 hole in the top of the overflow bottle to allow for expansion.

When the cap is screwed on, make sure that the tube attached to the cap reaches the bottom of the bottle to draw coolant fluid from the bottom.



Note: Tie-wrap overflow hose where necessary to avoid rubbing during engine operation.

If necessary cut off the 90 degree bend at the top of the overflow bottle tube.
IMPORTANT: Drill a #20 expansion hole in top of cap.



Support bottom of overflow bottle with straps.

Note: Rudder hose sliced down the middle over the engine mount with tie wrap around battery cable.

Overflow bottle installed on right side of firewall.

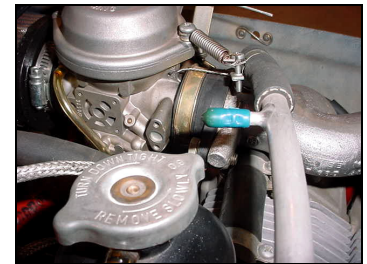


**1/4" CLEAR HOSE FOR OVERFLOW BOTTLE
P/N FFLT-64**

Length=2ft=635mm

For Anti-freeze info, see Rotax manual.

Seal the barb fitting under the plastic cap located on the cross tube between the two carburetors



1/4" clear hose connects to the fitting on the neck of the pressure reservoir (located on top of engine) to the overflow bottle.