

SECTION 4

OIL RESERVOIR / OIL LINES



Detail of left side



Rotax Oil reservoir supplied with engine.

Installed on left side between the tubes of the engine mount.



Oil reservoir in front of the Upper channel 7F7-1SP

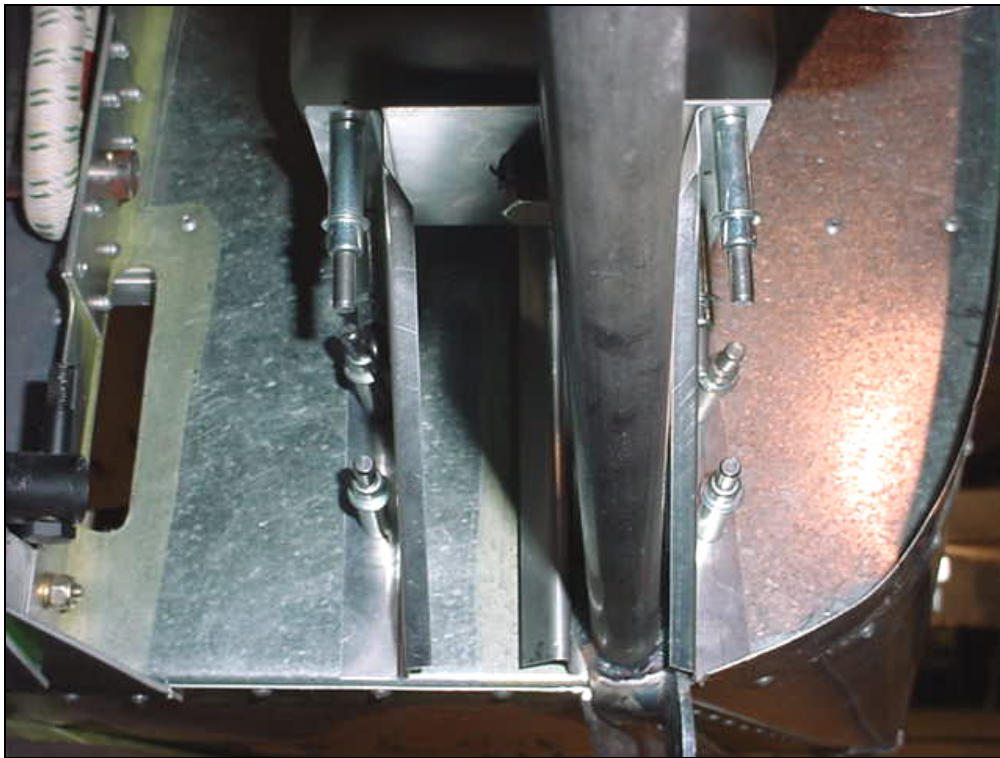
The filler cap is above the Upper Channel 7F7-1SP



Set the height of the reservoir before installing the lower support bracket 7E3-1R

**HOSE CLAMP 5"
6722-5 qty=1**

Cut a hose clamp in half. Rivet with 2 rivets A5 to the front flange of the Upper Channel 7F7-1SP



**7E3-1R
OIL TANK TOP
BRACKET**

**7E3-2R
OIL TANK SIDE
BRACKETS**

The left Bracket 7E3-2R is installed on the outboard side of the engine mount with the firewall flange pointing outboard.



4 RIVETS A4
7E3-2R into 7F1-1



3 RIVETS A4
7E3-1R to 7E3-2R

Note: $\frac{3}{4}$ " hole in the Top Bracket 7E3-1R to make room for the drain plug at the bottom of the oil reservoir

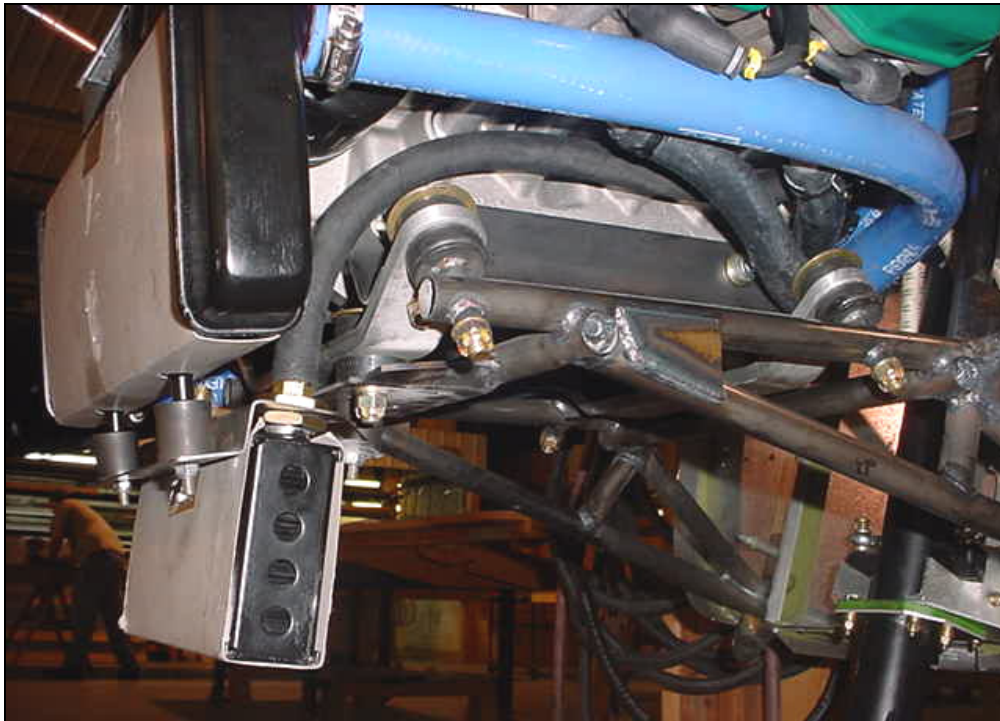


OIL LINE:
Supplied length =
1500mm
Inside diameter = 12mm
P/N 956-391

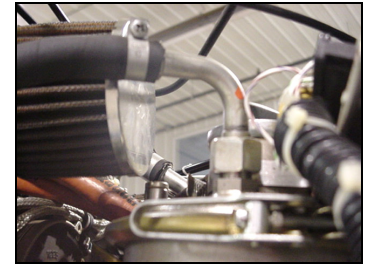
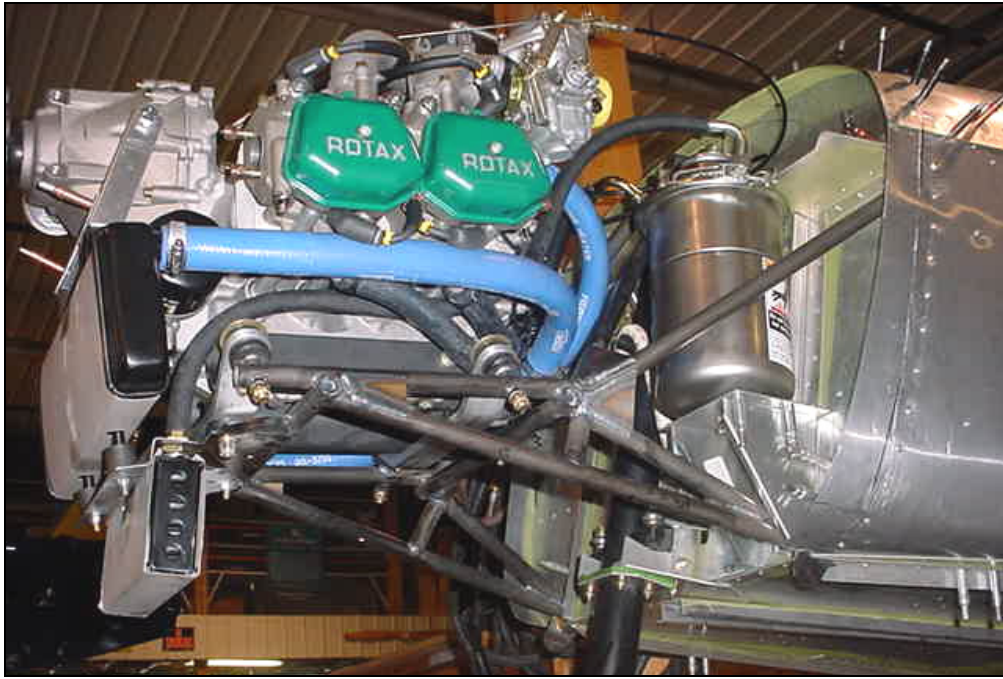
Cut length:
750mm = left side
650mm = right side

Use 100mm for short
length on right side of oil
cooler

Suggestion: remove the oil cooler to install the oil line on the straight fitting.
750mm length hose.

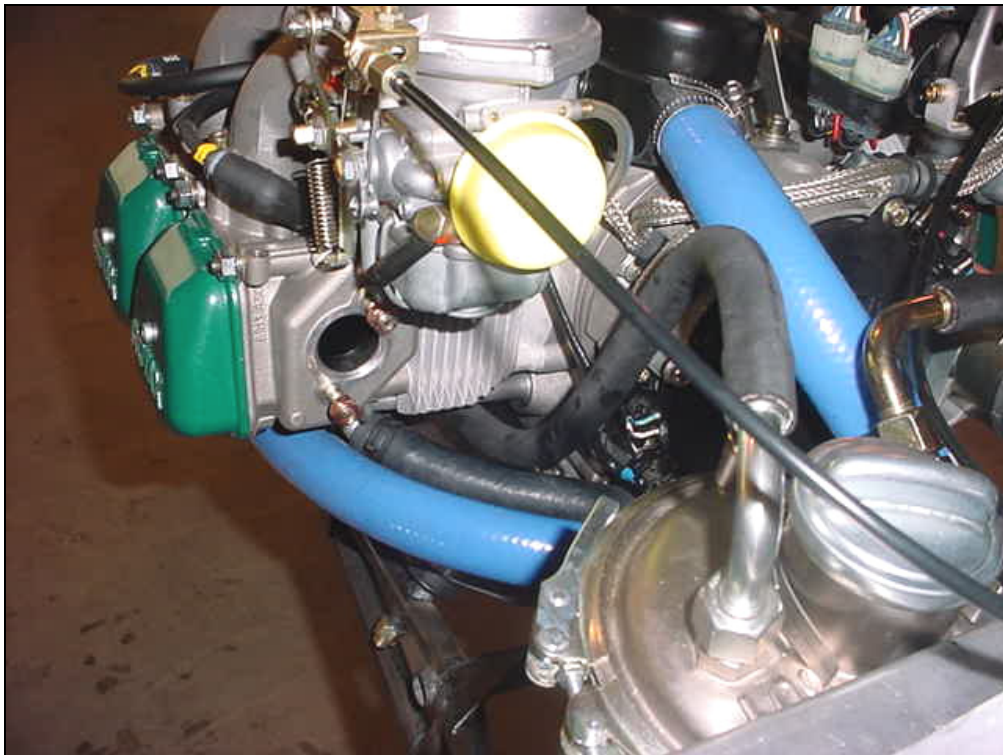


Re-install the oil cooler
with the oil line on the left
side of the engine.

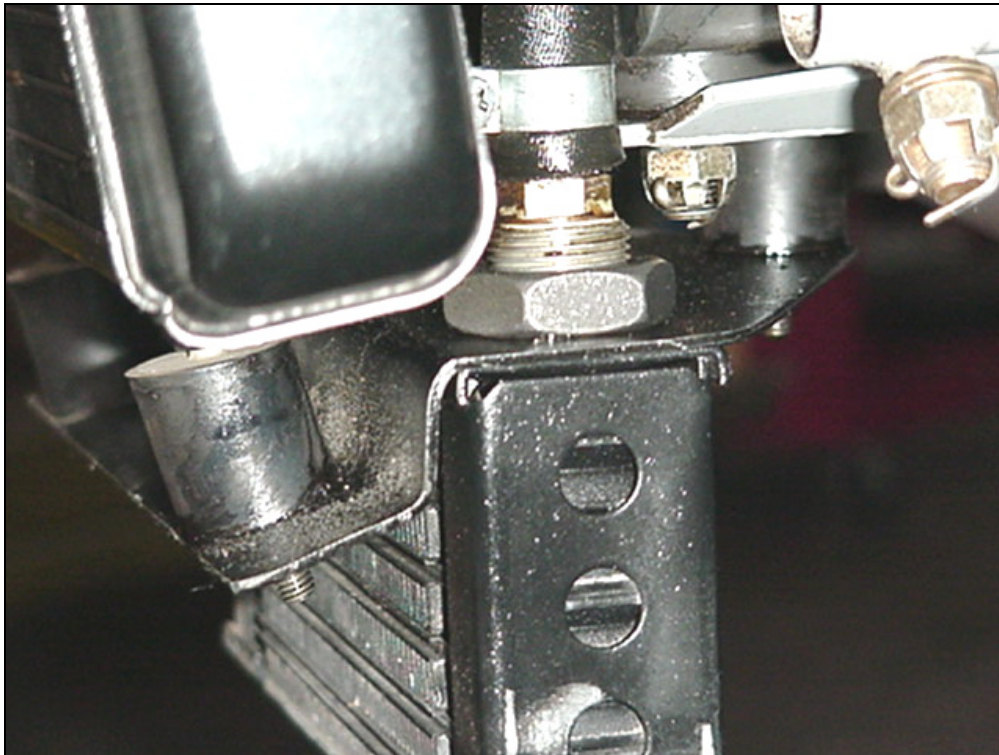
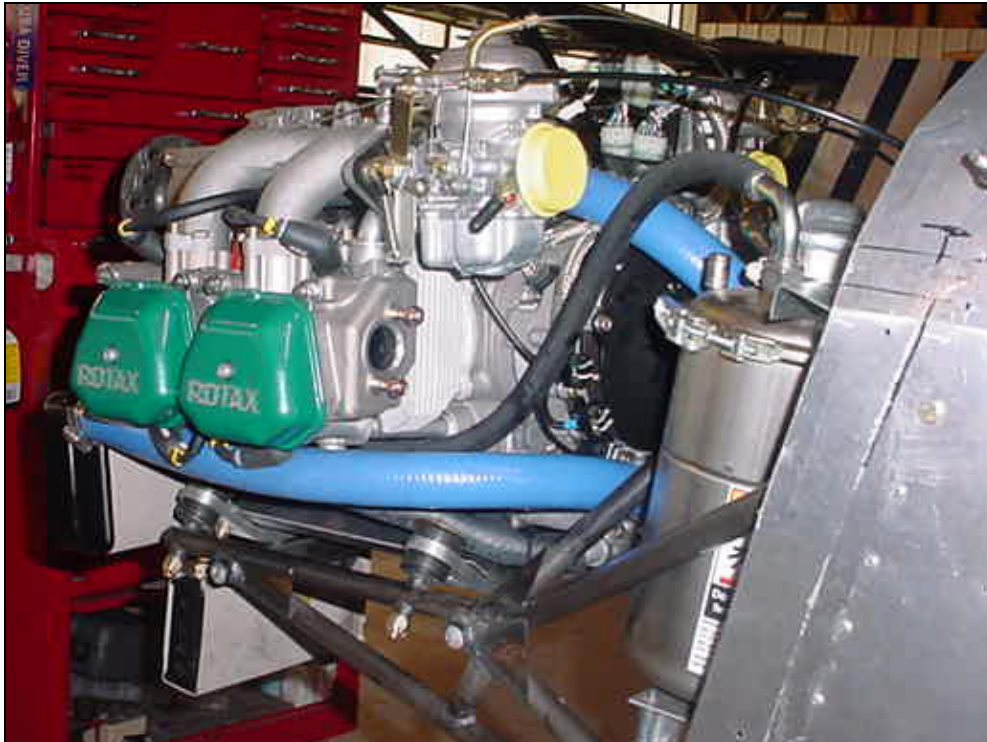


OUTLET ON OIL TANK
Check: open the reservoir
to make sure this goes to
the bottom of the tank.

Left side of engine
Oil line from top of the tank to top left side of oil cooler

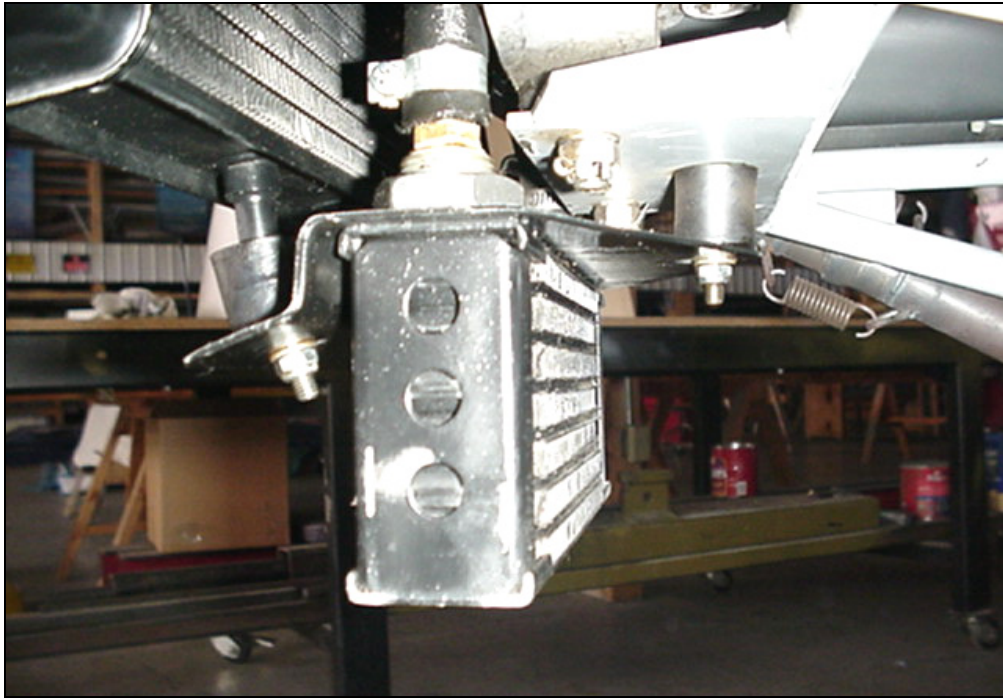


Oil line Routing



**Nut M22
156-088**

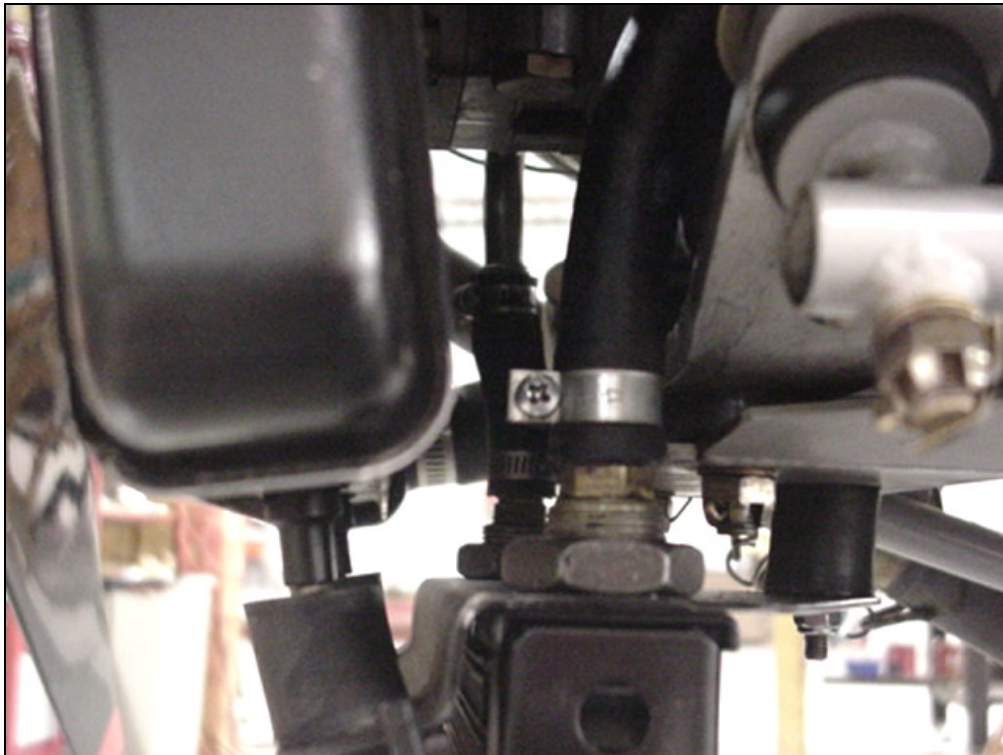
Detail of the oil cooler attachment to 79-CB



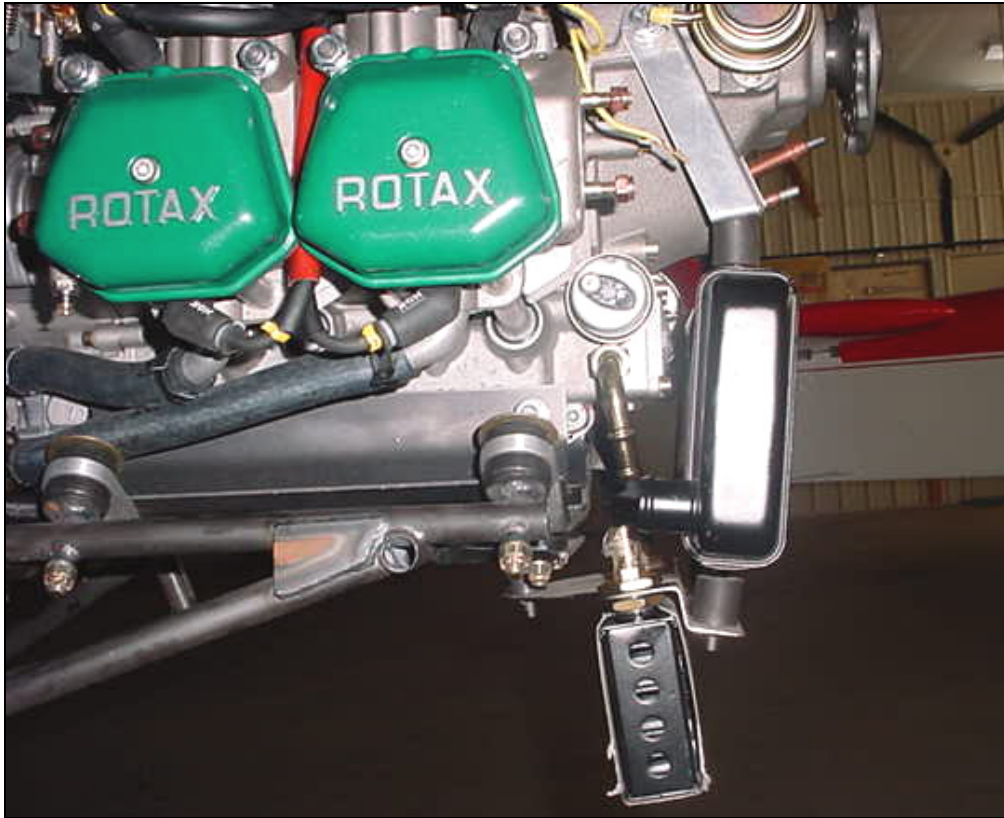
**Rubber Mount
316-004**

Rubber mount bolted to the underside of the flat plate on the engine mount

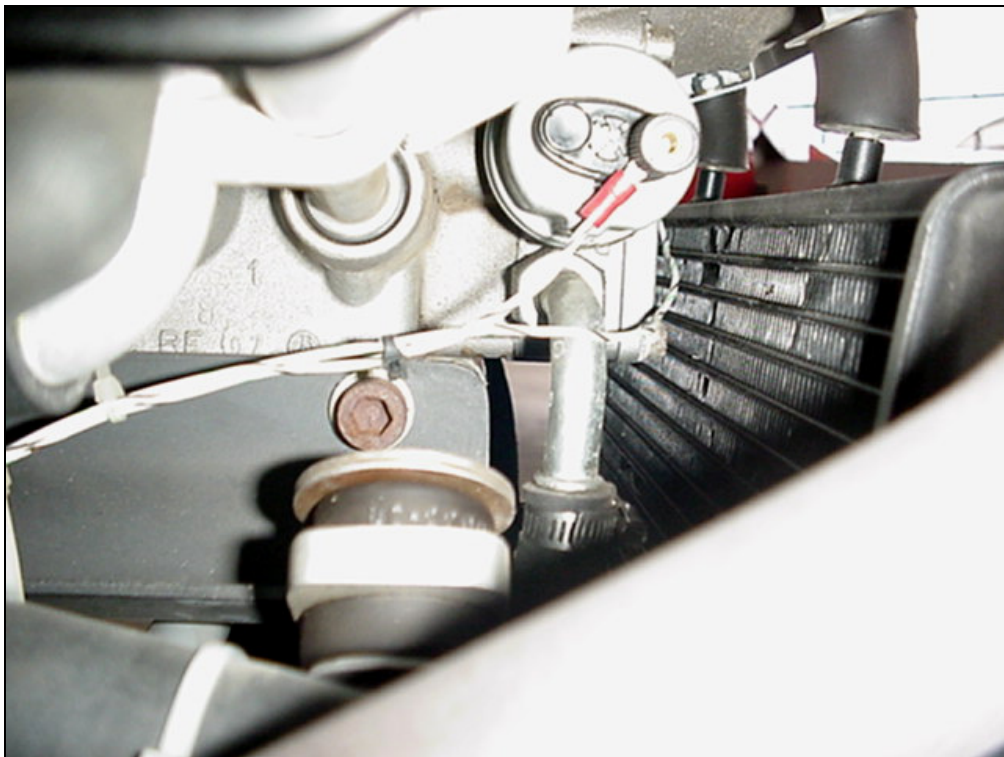
Hole is approximately 54mm from the aft edge of the flat plate on the bottom of the engine mount.

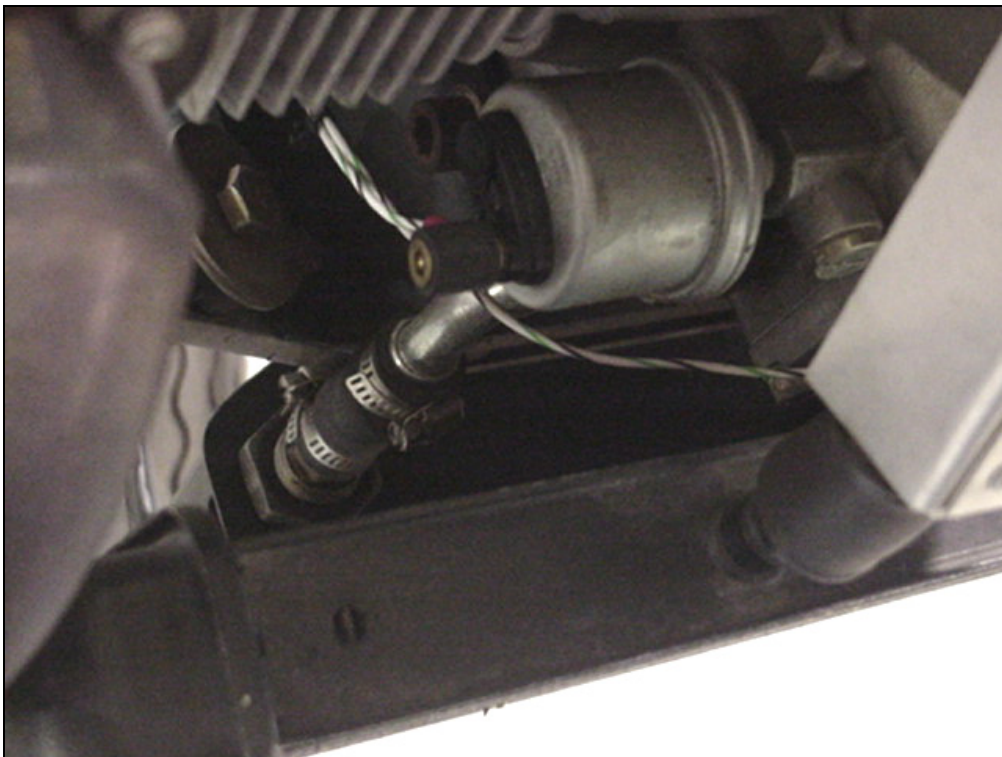
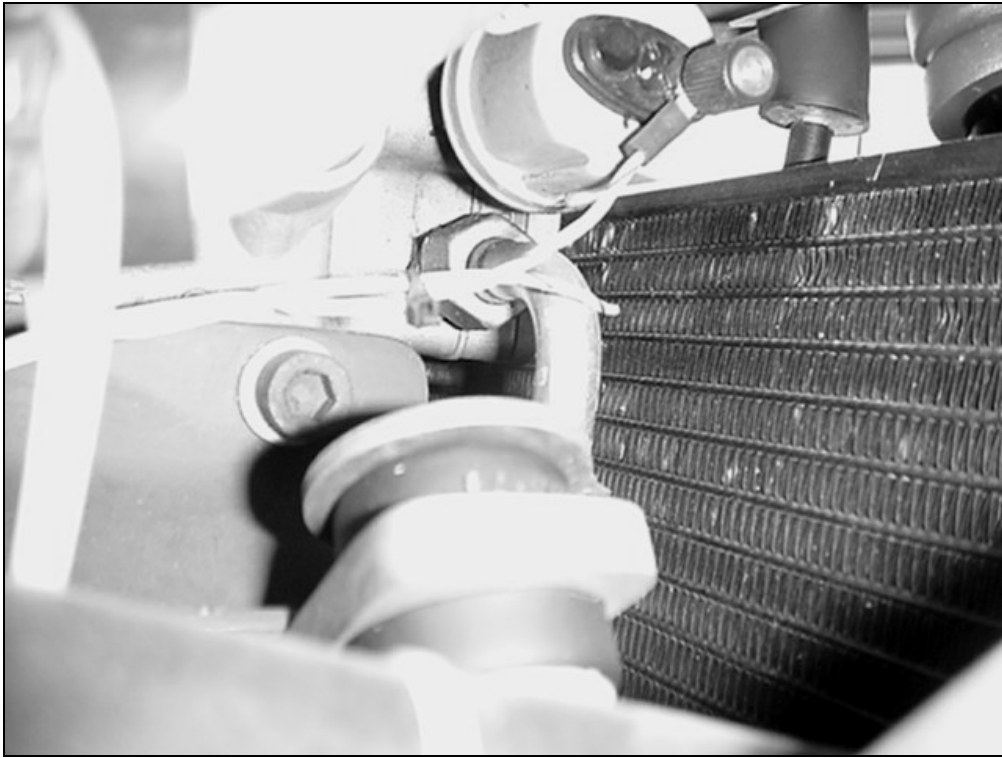


Detail of the top of the oil cooler and the bottom of the radiator

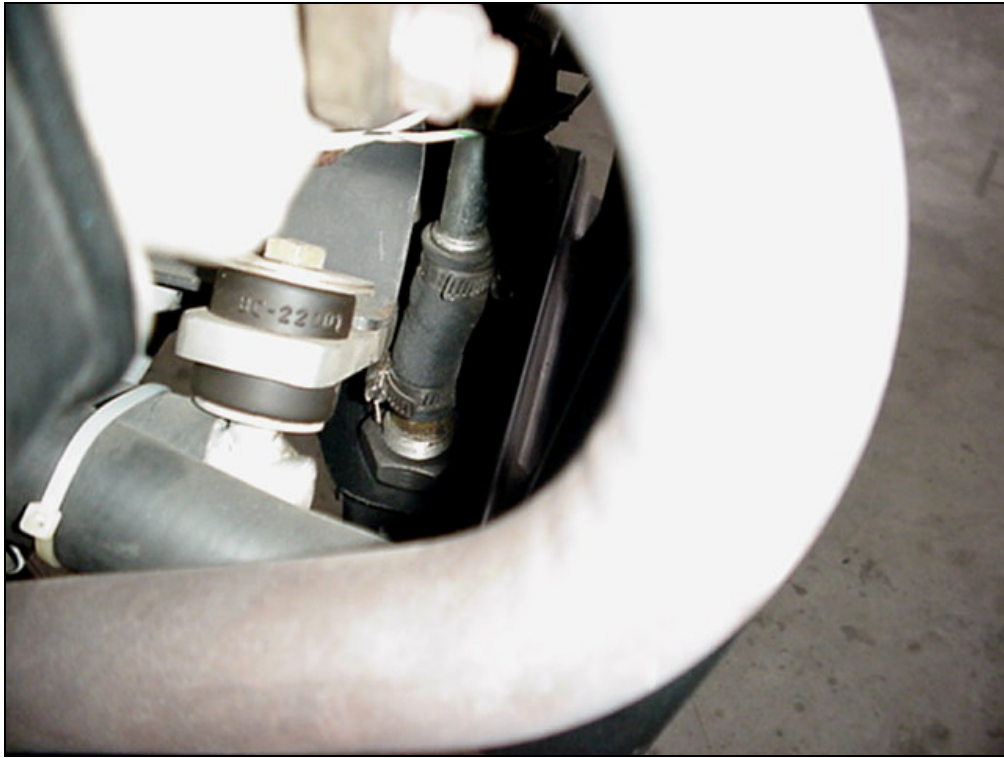


Connect the right side of the oil cooler to the 90-degree elbow on the front right side of the engine.





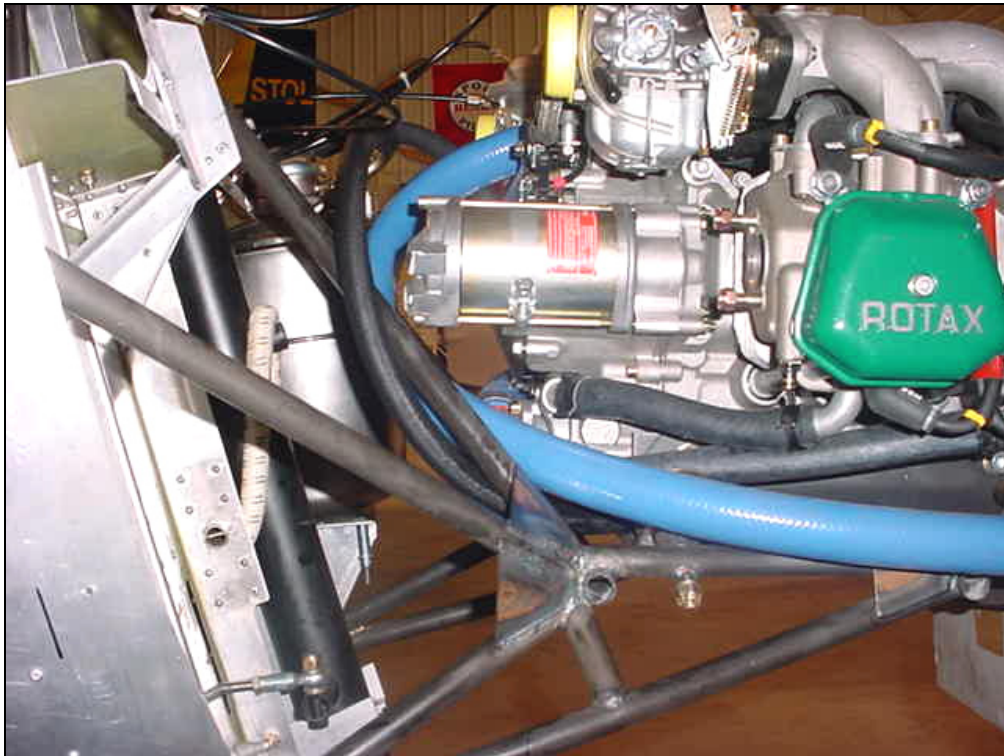
Note: The bottom of the 90 degree bent socket assembly is in line with the nipple fitting on the oil cooler.



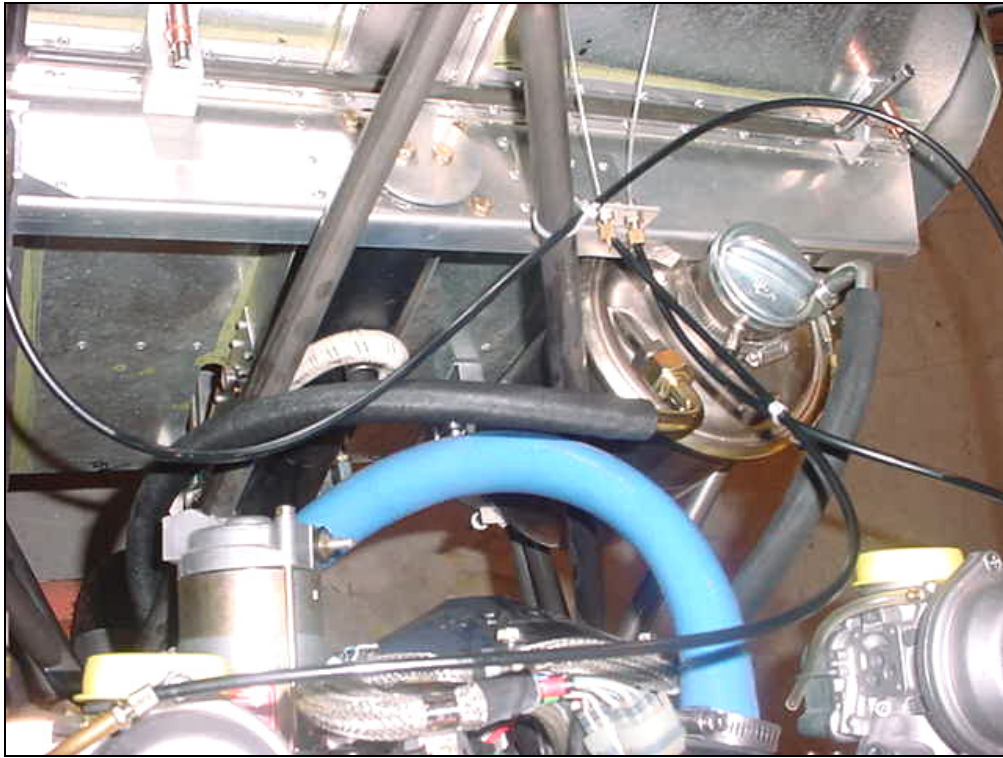
Short piece of oil line hose to connect the 90 degree bent socket assy. to the nipple fitting.

Secure with 2 hose clamps and safety wire the hose clamps.

Detail of right side fitting to oil cooler.

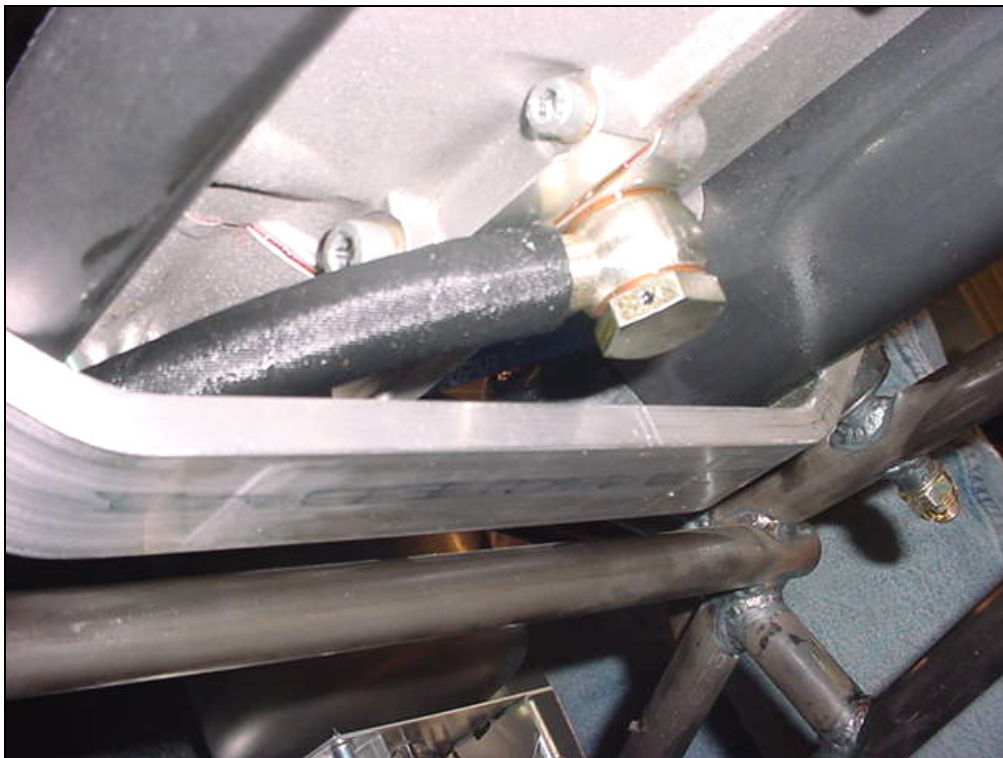


Right side of engine, oil line routing around the engine mount.



90 degree elbow on the oil tank.

IMPORTANT: Secure the ends of the oil line with hose clamps.



Suggestion: remove the fitting from the engine to insert the hose.

Add a hose clamp on the hose and safety ties to bolt.