

SECTION 8

COWL



Top and bottom fiberglass cowl



Joggled flange along the top of the bottom cowl

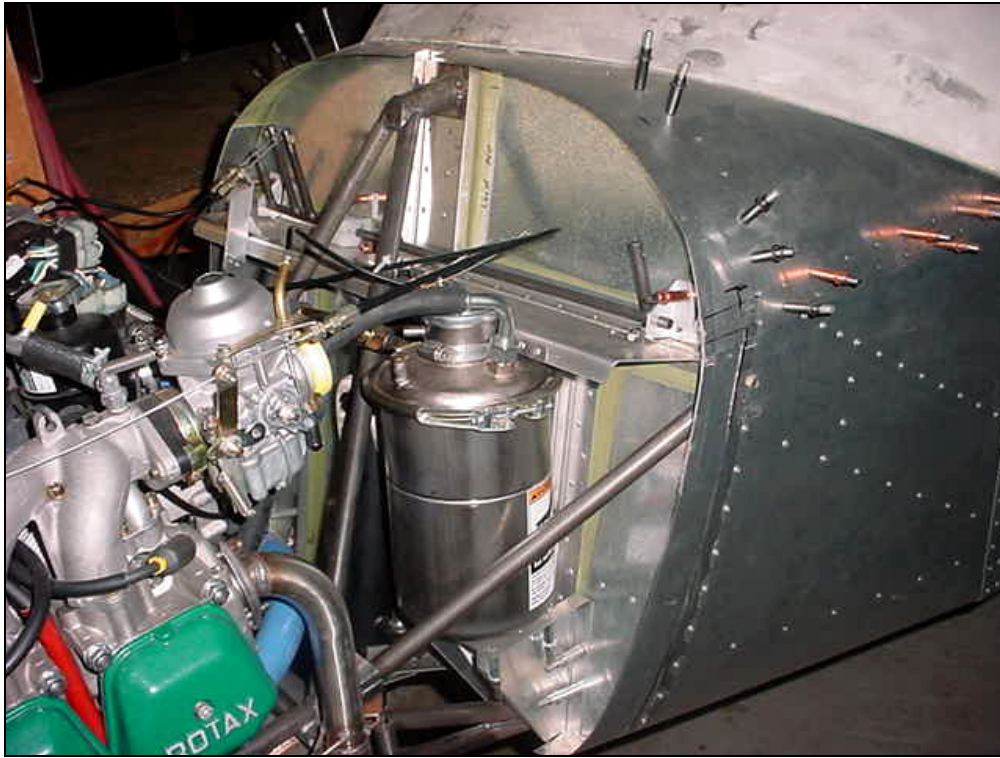
The top cowl overlaps on top of the joggled flange.



Underside of cowl

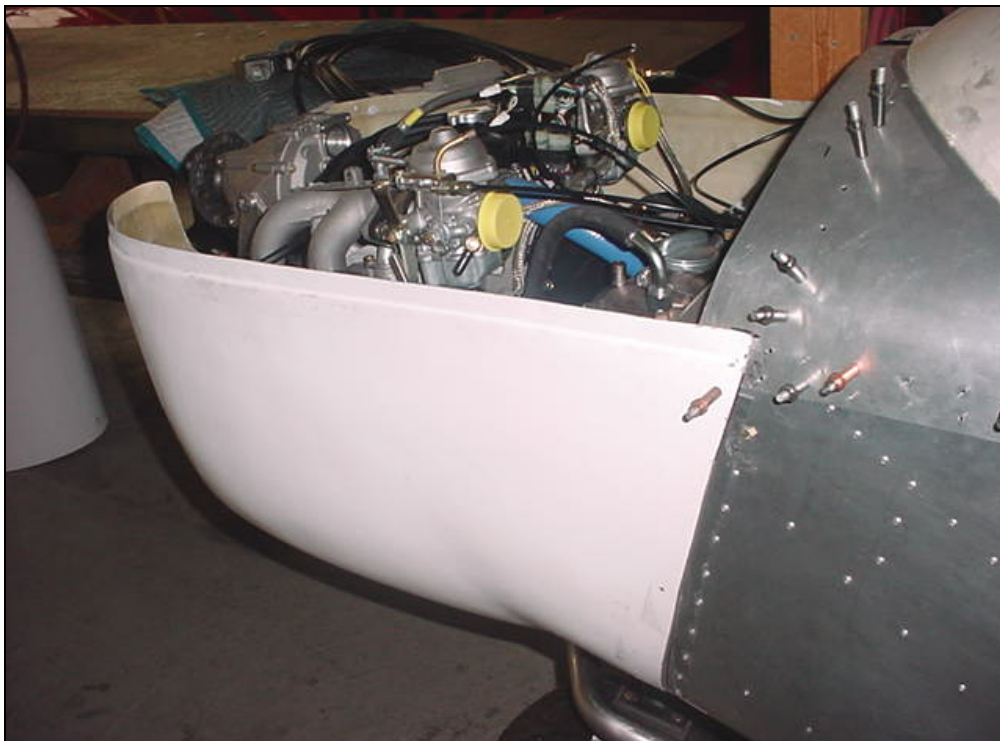
Tape the top half of the cowl to the bottom cowl.

Start at the front.



Fuselage side skin overhangs past the front of the firewall (all around)

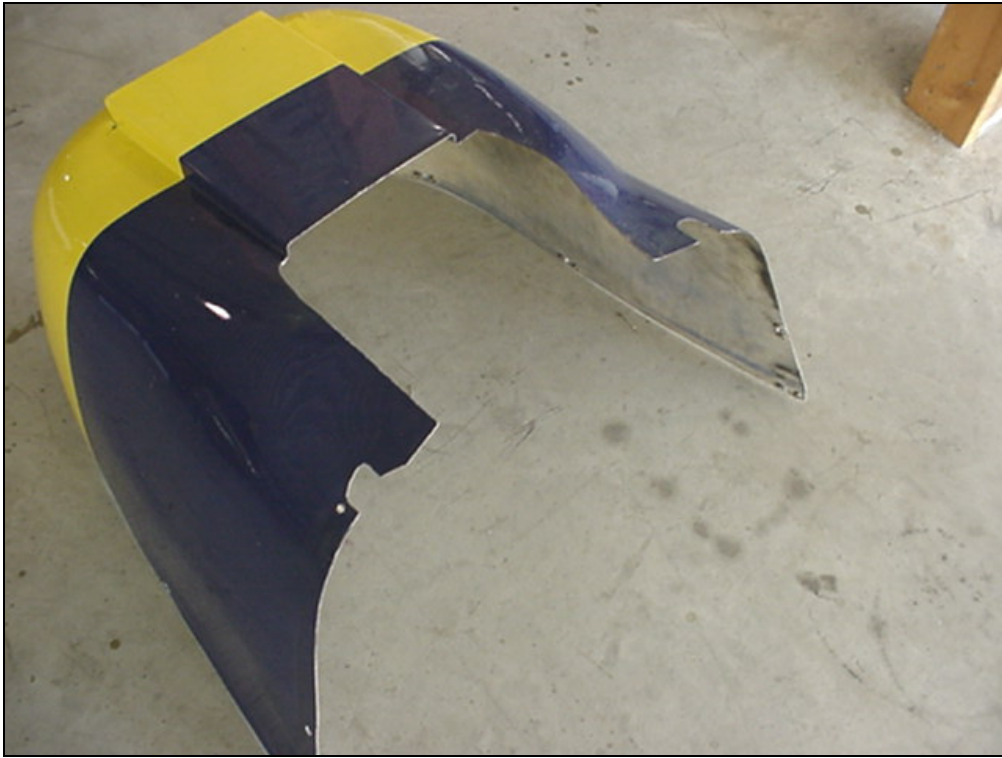
Note: the engine is installed before the cowl is fitted.
Remove the muffler to install the cowl (the bottom of the cowl will have to be trimmed to make room for the muffler)



Position the bottom cowl on top of the fuselage overhang.
IMPORTANT: Do not position the cowl on top of the rivet line through the firewall.



Cutout to go around the float attachment bracket welded on the engine mount



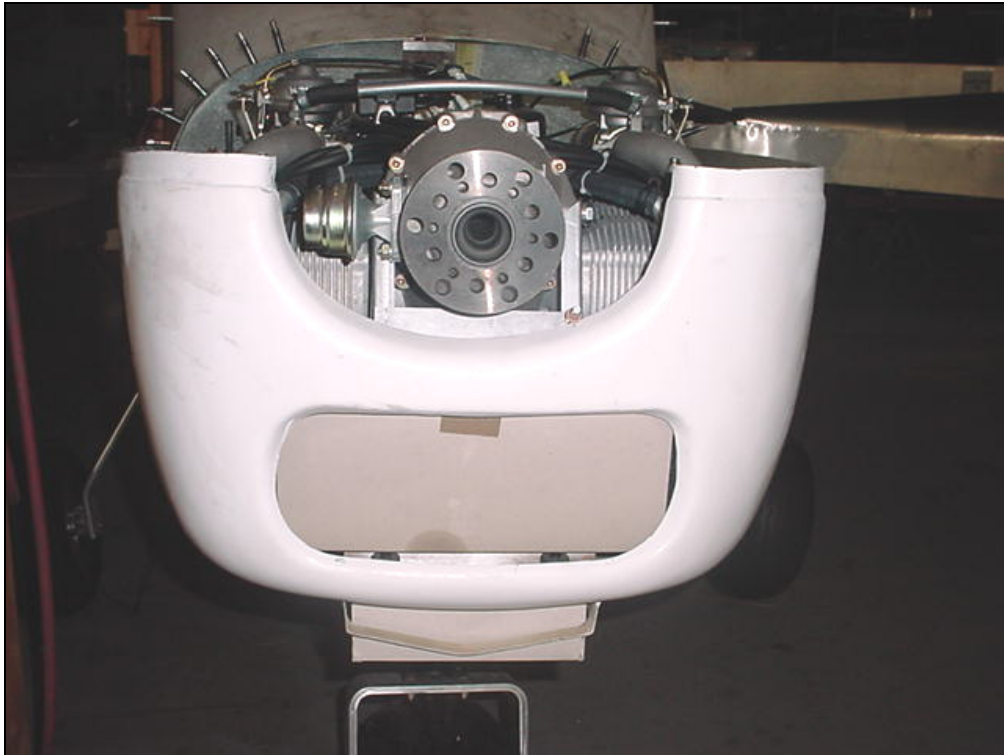
Left and right cutout to make room for the brackets at the bottom of the engine mount.

The larger cutout in the middle is to make room for the muffler. First fit the cowl to the aircraft without the muffler. Then install the muffler and trim the bottom cowl to clear.

Note the cutouts to make room for the float fitting at the bottom of the engine mount.



cutout in the bottom cowl to make room for the bottom of the oil cooler.



Adjust the cowl up and down to center the radiator in line with the opening in the cowl.

Use tape to hold the cowl in place. Check the opening is horizontal.



Look down, front left side, Check that the cowl does not touch the radiator



Check for prop clearance of the cowl

Note: the prop is approximately 3 degrees to the aircraft center line. Ref 7-E-1



Position a straight edge across the bottom portion of the prop flange, Check for minimum 12mm clearance between the front right side of the cowl and the straight edge (the straight edge represents the aft edge of the propeller).



9" Fiberglass Spinner not included in Firewall-Forward kit.
(Available from UHS.)



Check the profile alignment and the clearance with the coolers.



Detail of Dzus on the backside of the top cowl.

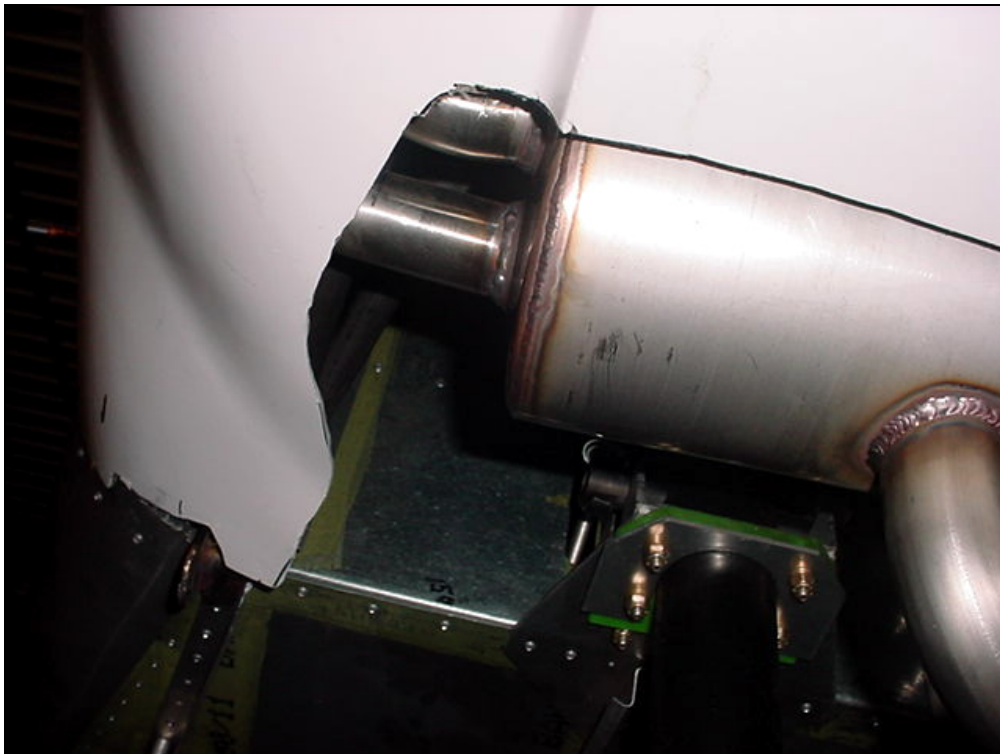


4 Dzus fasteners per side

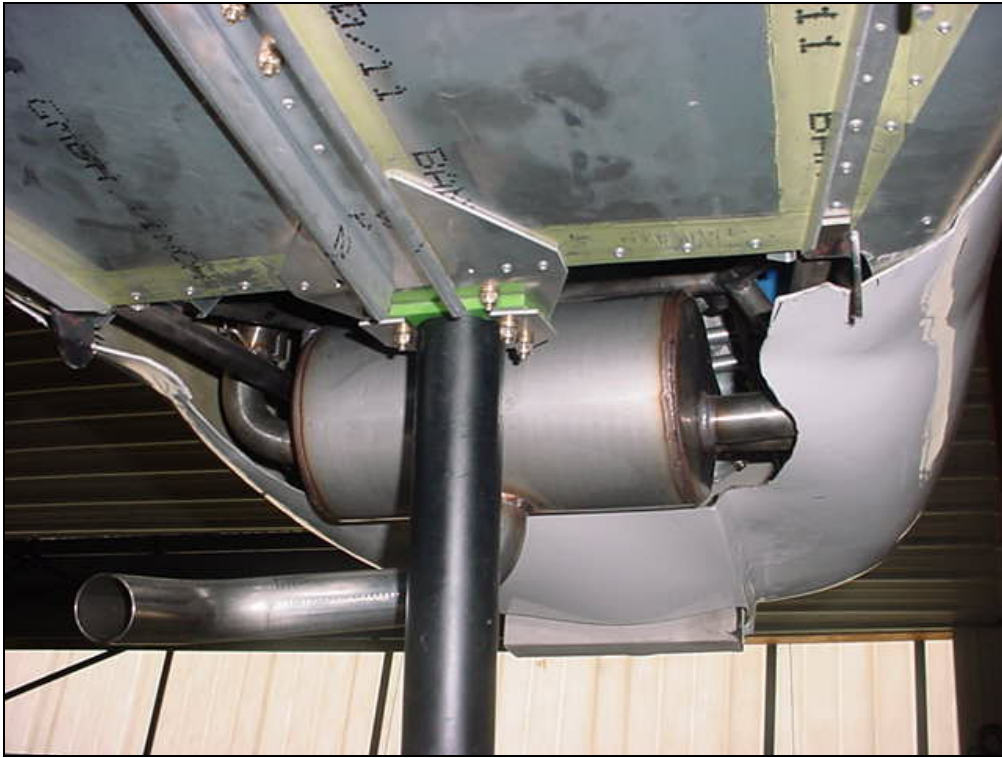


Re-install exhaust system and newly fitted cowling.

Trim bottom fiberglass cowl to fit around muffler (1/2 inch minimum clearance).



Allow enough clearance for easy removal and re-installation of cowl.



Viewed from behind nose wheel, facing forward.





Front bracket
79-FB

Riveted to the side
brackets 79-SB



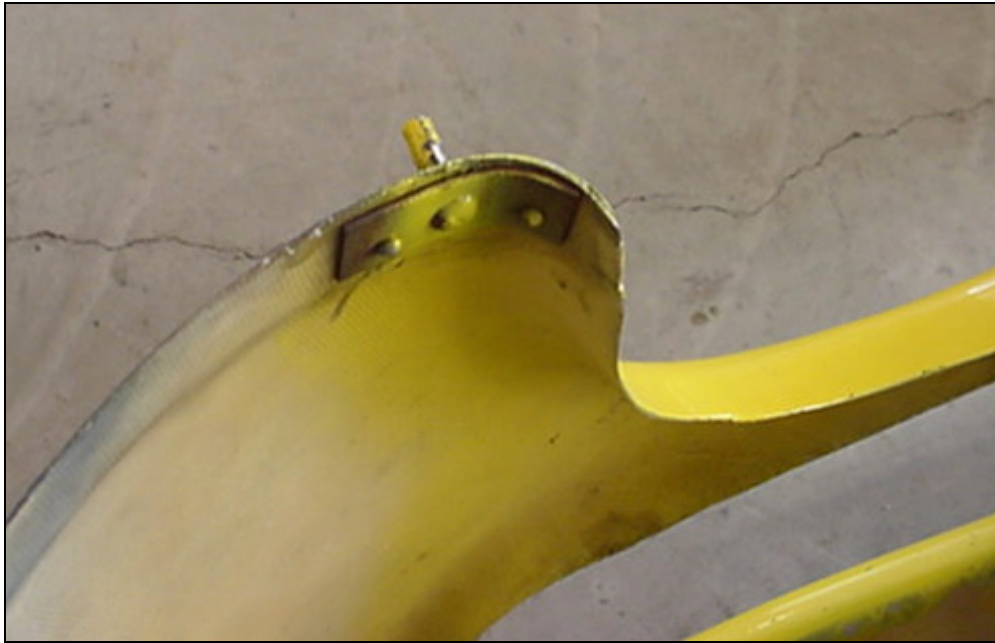
Cowl pins installed on the
inside of the bottom cowl



Cowl pin through the top cowl



Right side
Cowl pin



Left side
Cowl pin



Engine with the top cowl
removed.

Note: Bottom Cowl kept in
place by one DZUS
fastener on each side.