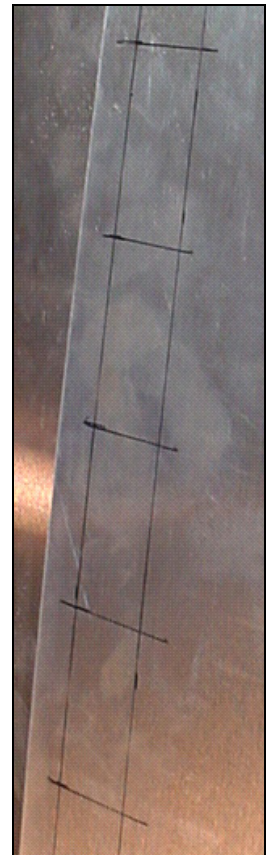
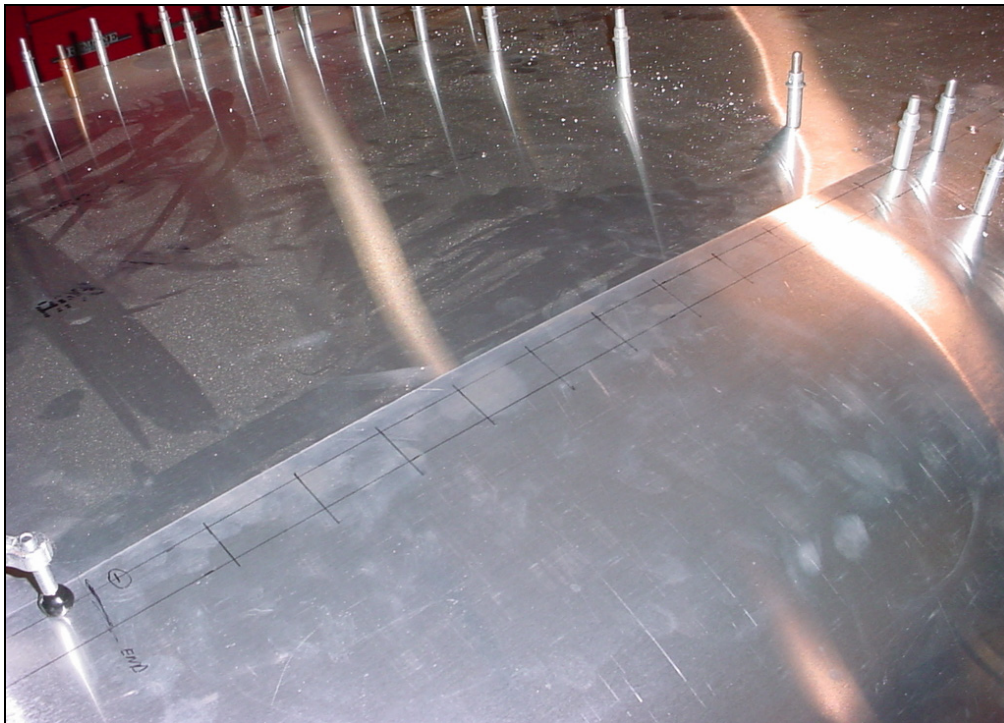
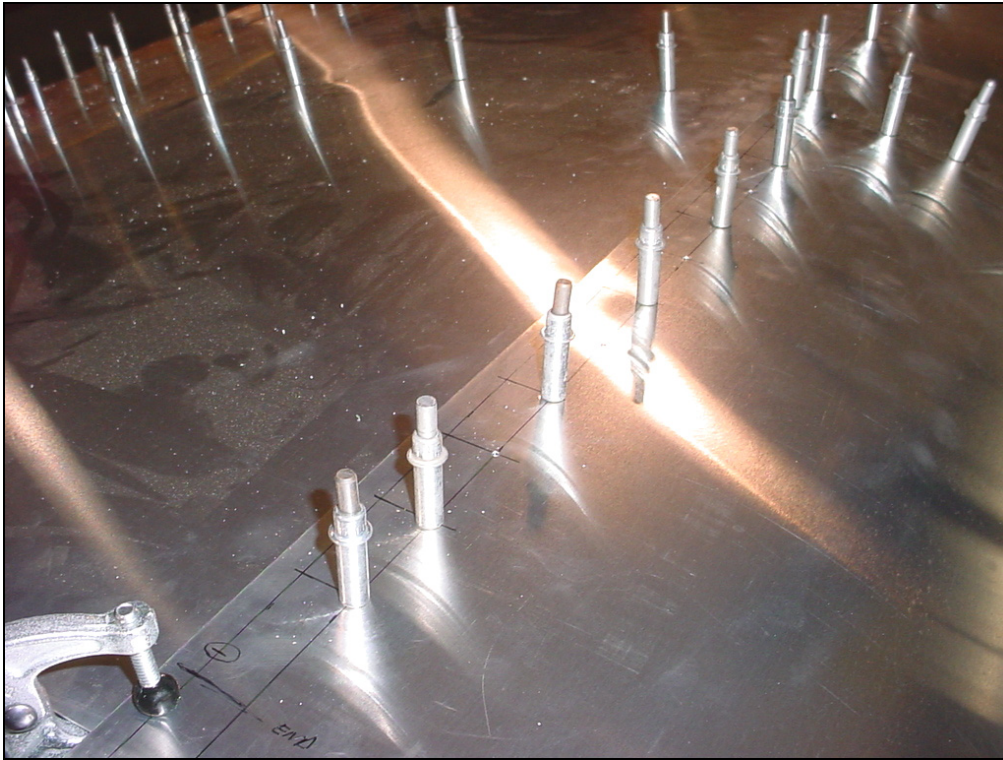


Clamped.
End hole is 10mm from
the end of the spar tip.

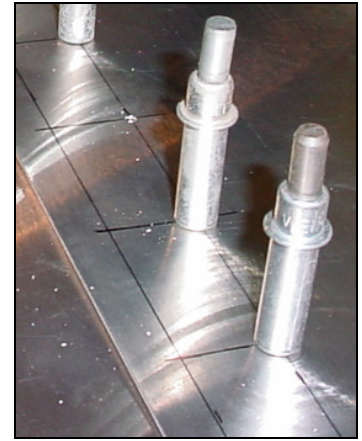
Clamp the nose skin 7V7-1 to the rear top skin 7V7-1.
Mark the end of the spar tip 7V3-3 on the skin.



Layout the 2 rivet lines. Ref. left diagram, second down from top of drawing 7-V-8. Aft line (10mm edge distance) is in line with the continuation of the spar rivet line. Front rivet line is 30mm to the aft edge of the skin (through the top flange of the spar tip 7V3-3).



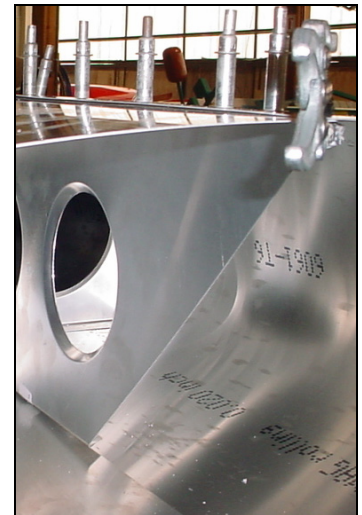
Drill and Cleco the front rivet line through the spar tip 7V3-3.



A4 pitch 40



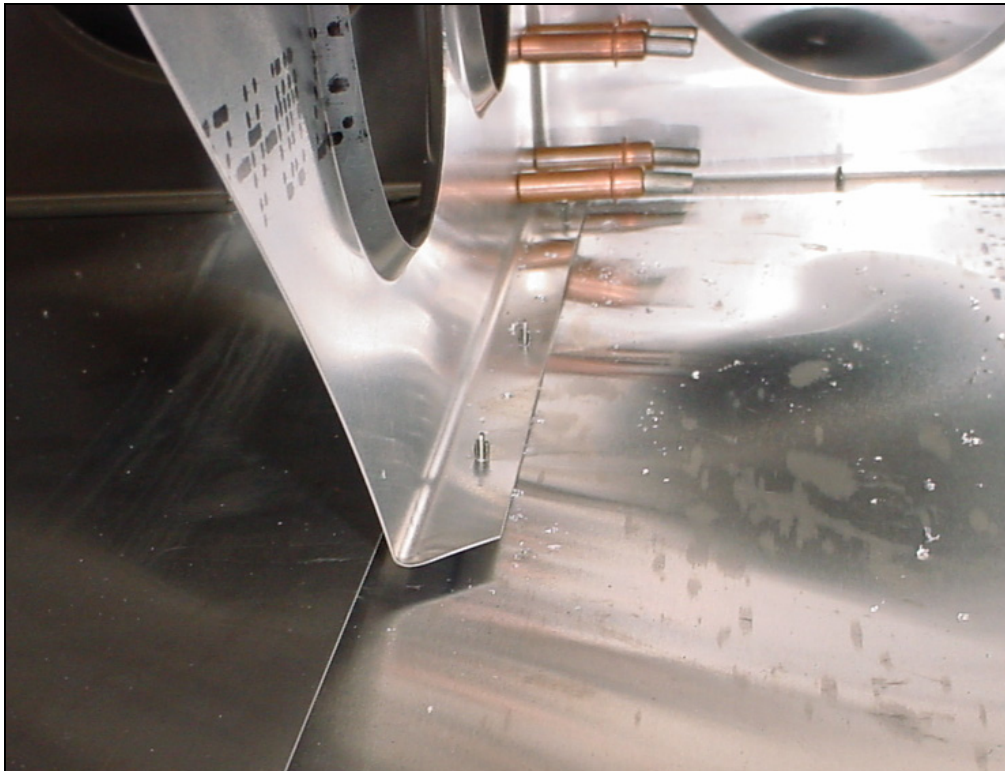
Check: edge distance of the rivet line in the top flange of the spar tip.



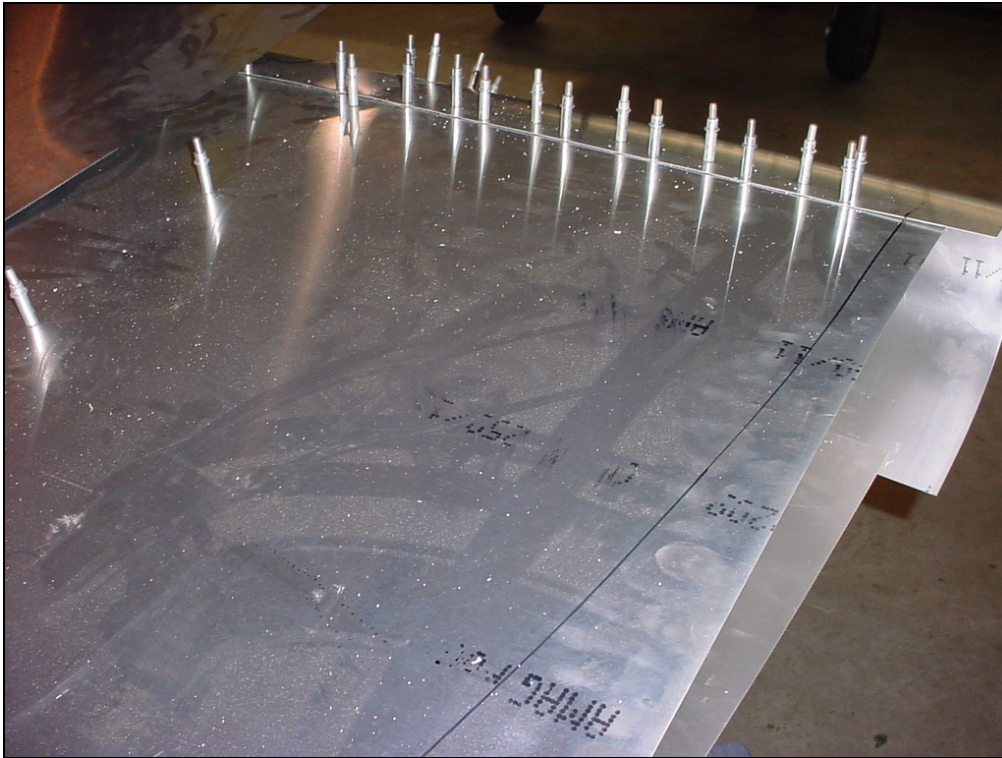
Layout the rivet lines on the bottom side of the wing.



Drill and Cleco the bottom side.



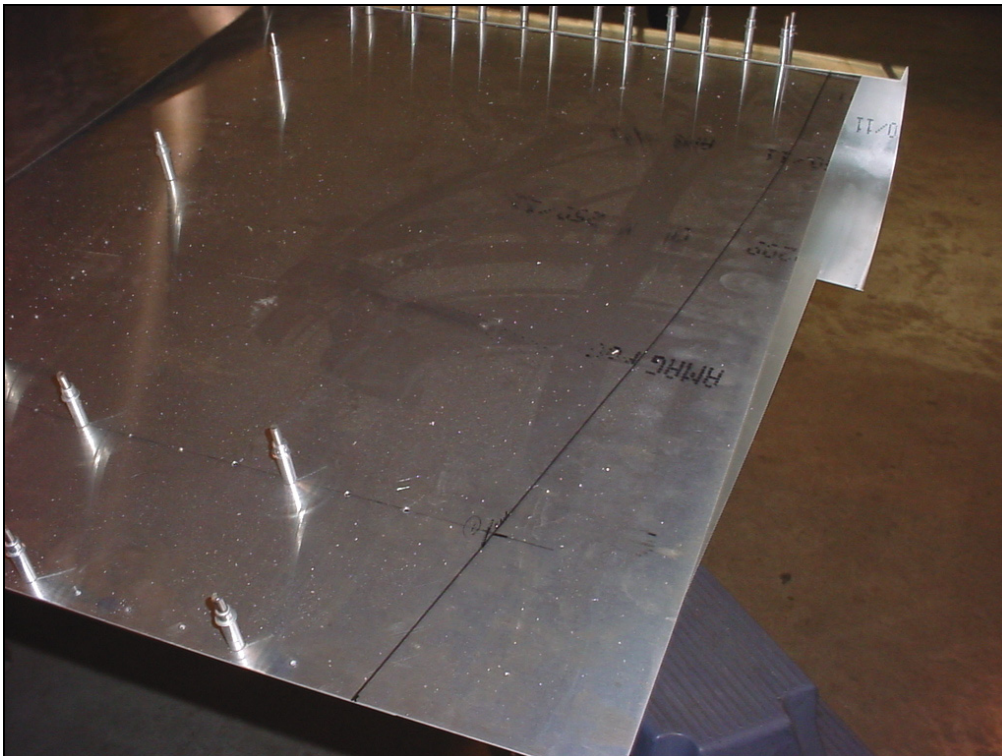
Check the rivet line is in the middle of the flange.



Lay out the coordinates for the wing tip.



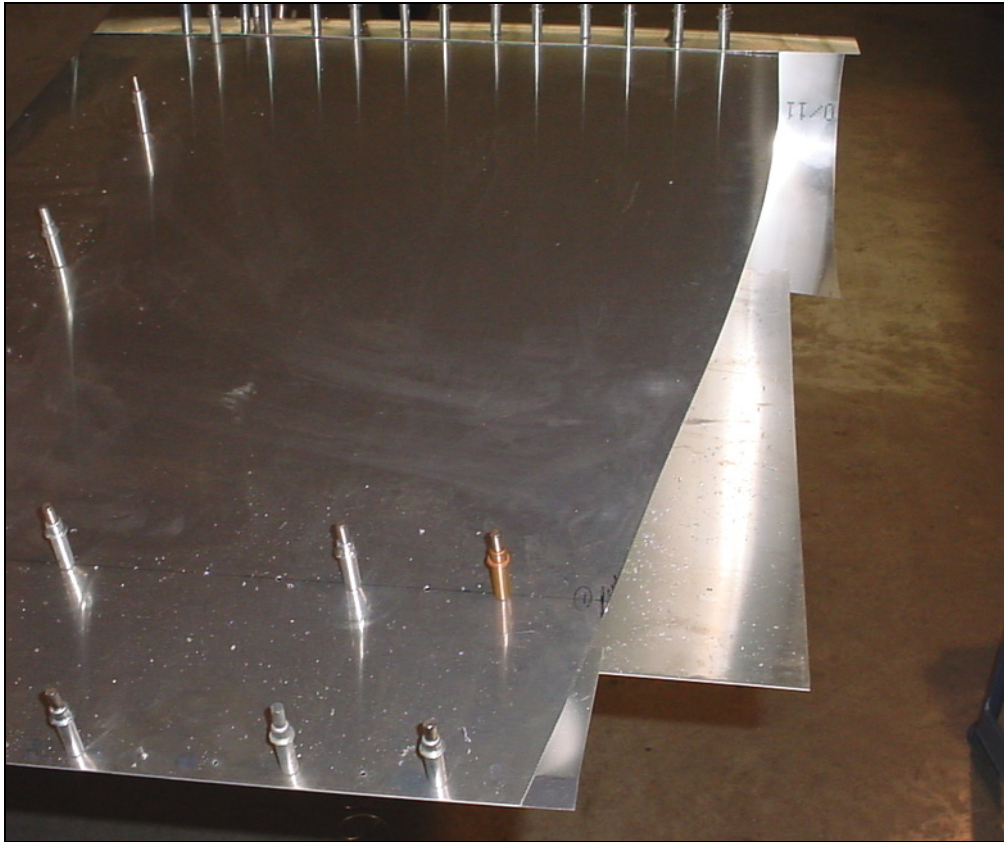
Drill the aft line



Connect the points with a smooth curve from the end of the spar tip to the trailing edge.



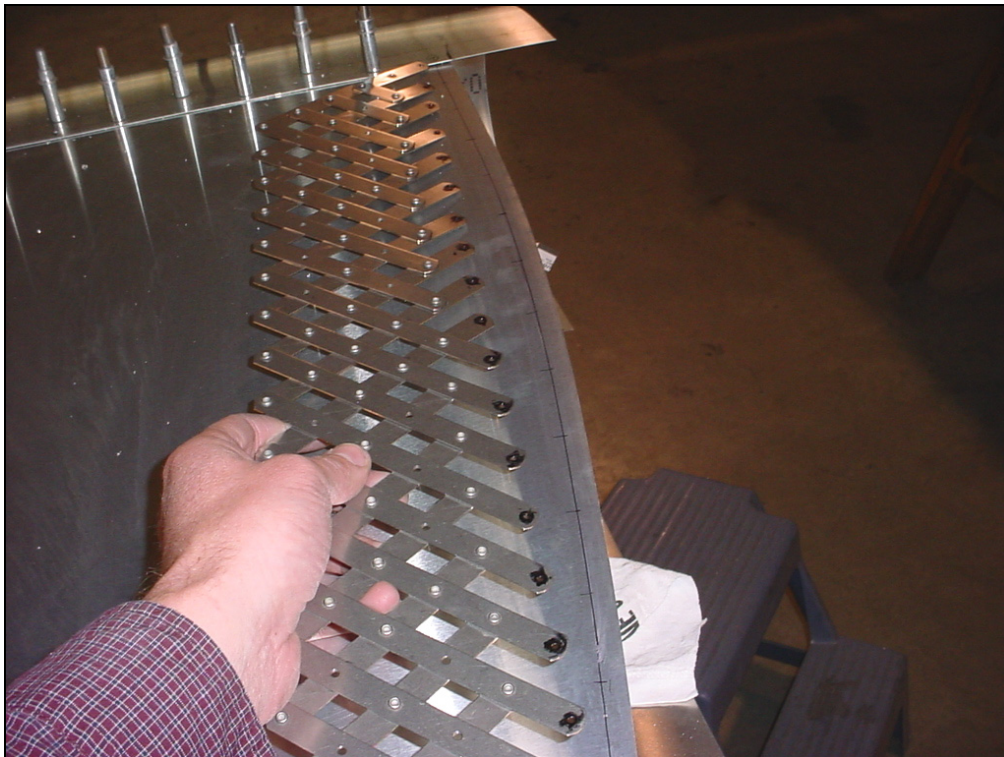
Ref. 7-V-9



7V7-2 Rear Top Skin (Right wing, view from rear).
Trim on line, file to a smooth edge.



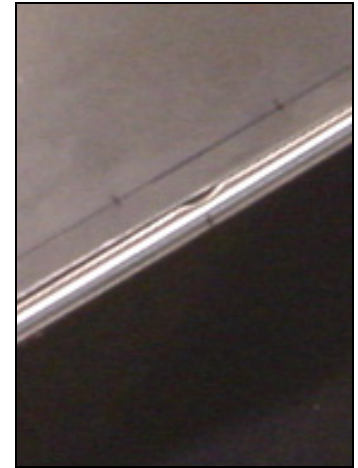
Rough cut the sink
approximately 10mm
oversize.



Lay out the rivet pitch lines on the top and bottom rear wing skins.



A4 pitch 50

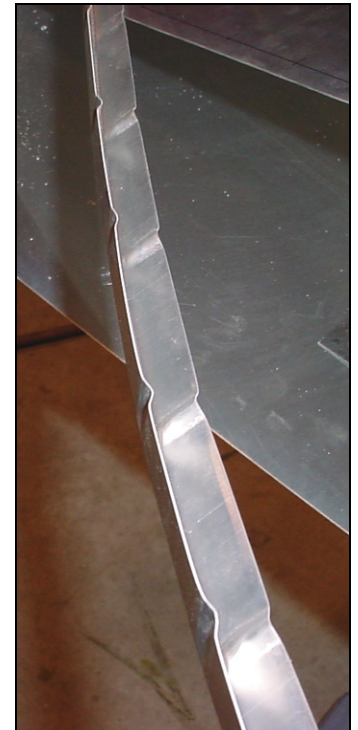


Layout the position of the crimps between the rivets.

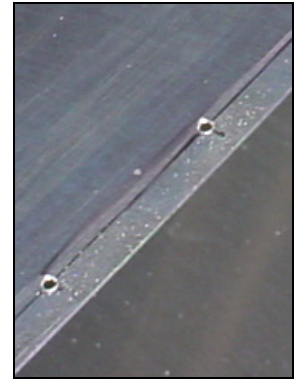
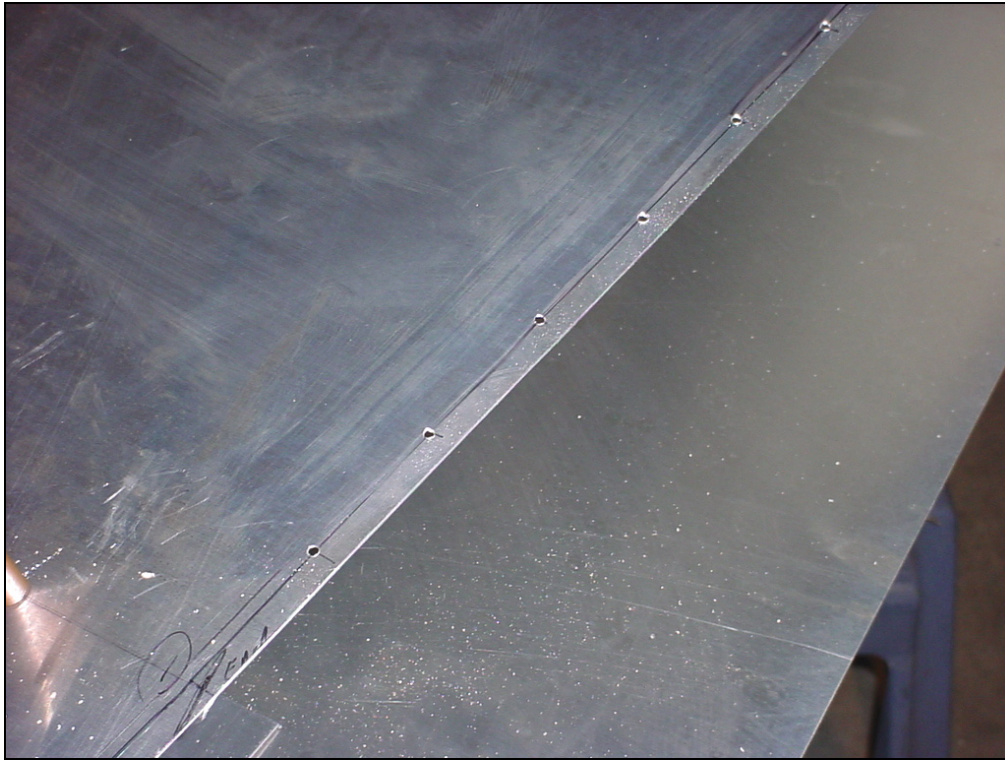
Crimp the top tip angle 7V8-2 to the shape of the top wing skin.



Position the top tip angle 7V8-2. To make the curvature of the wing, both flanges will need to be crimped. The crimp will be placed between the rivet.

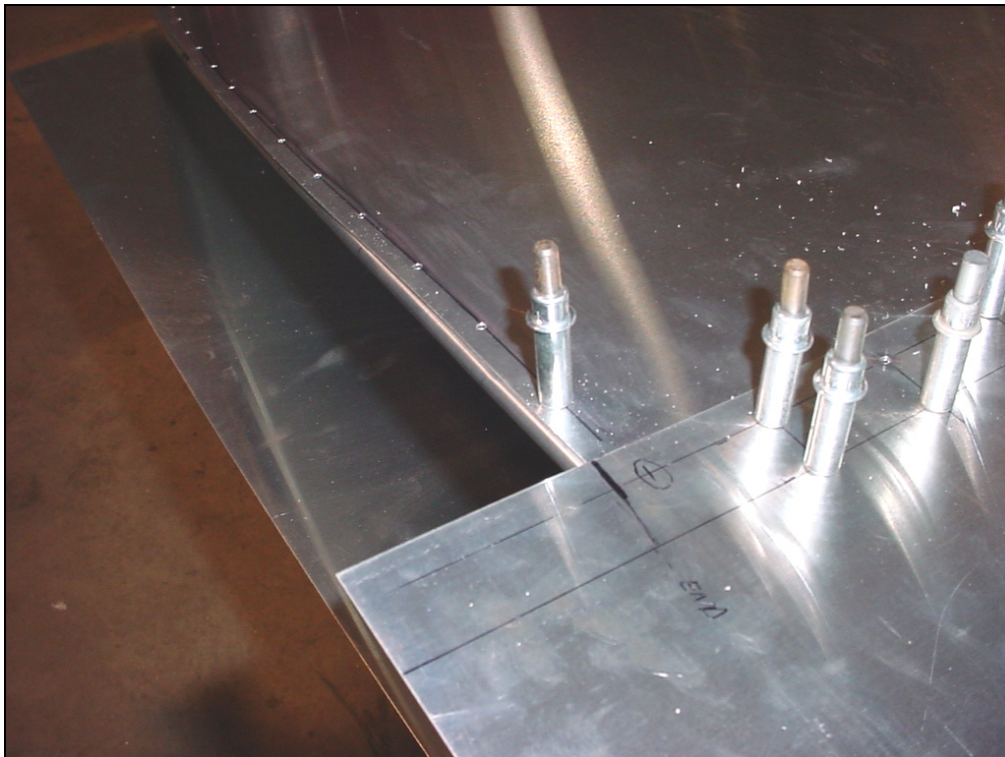


7V8-2 Top Tip Angle



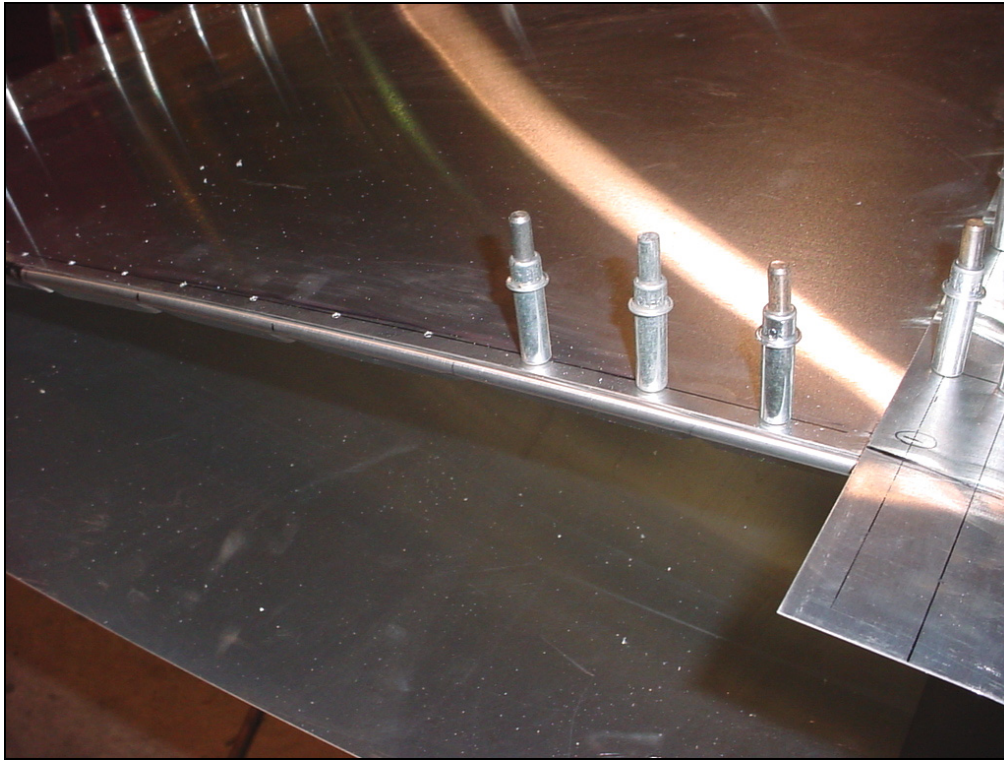
7V8-2 Top Tip Angle

Drill the skin with #40 pilot holes.



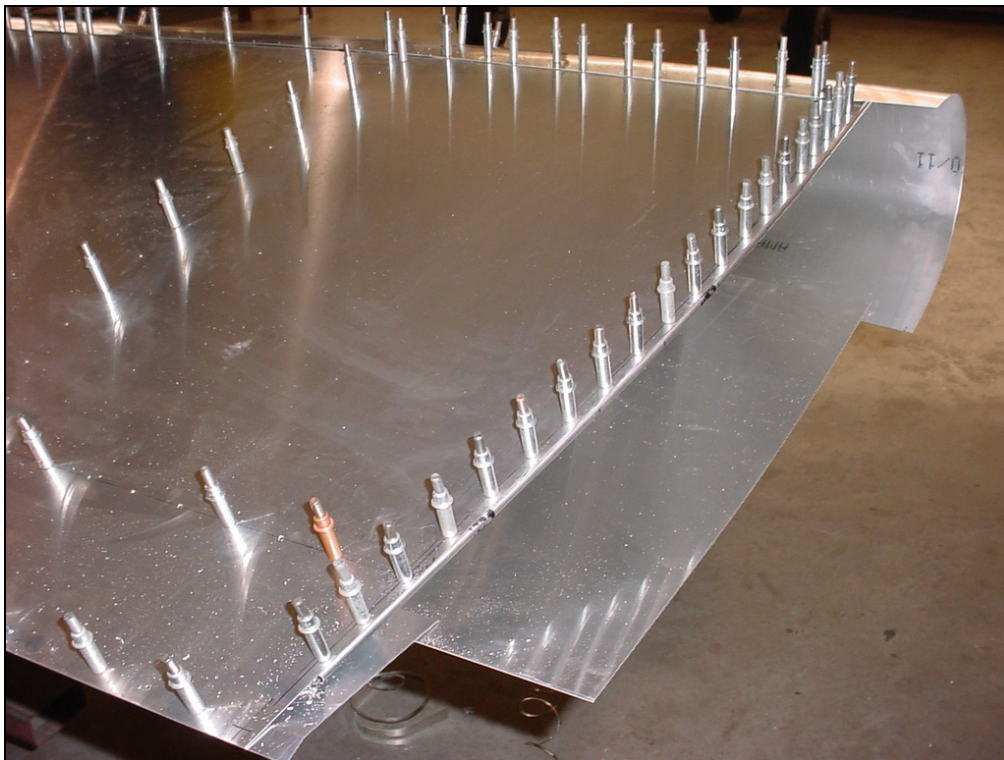
Line up the bend tangent line (beginning of the radius) on the edge of the skin.

Position the angle 7V8-2, back drill & Cleco.



Detail: location of crimp between the rivets.

Start at the front and work towards the rear.
Drill and Cleco each hole one at a time.



Drill and Cleco the wing tip angle to the wing skin.

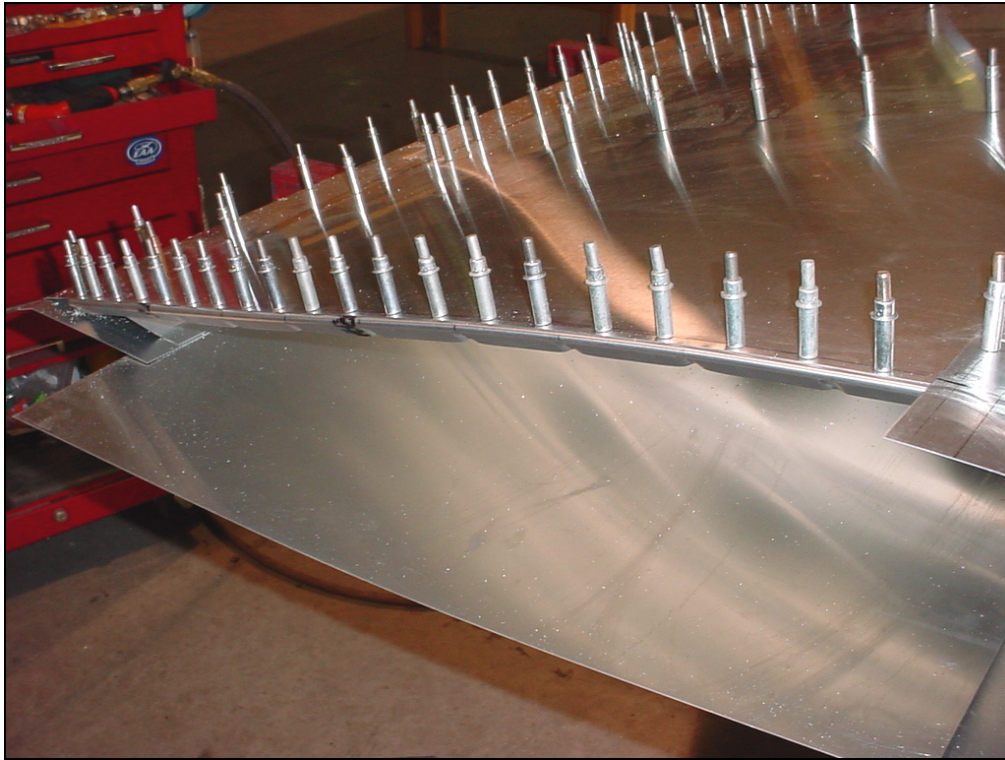


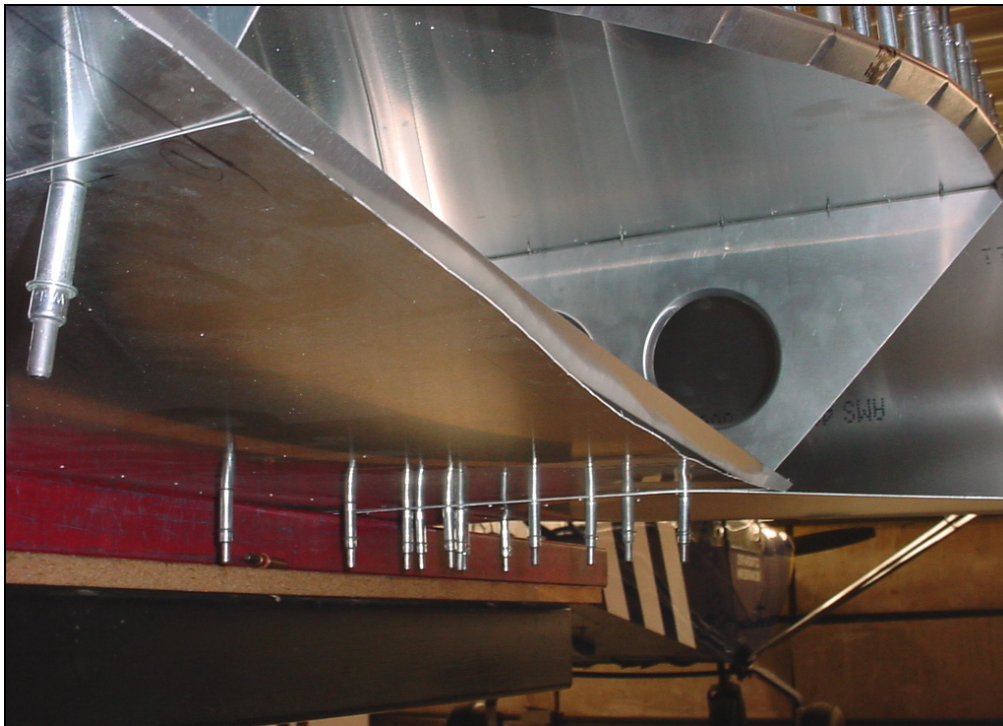
Photo of the wing tip.



Top tip angle 7V8-2 Clecoed to the top skin 7V7-2

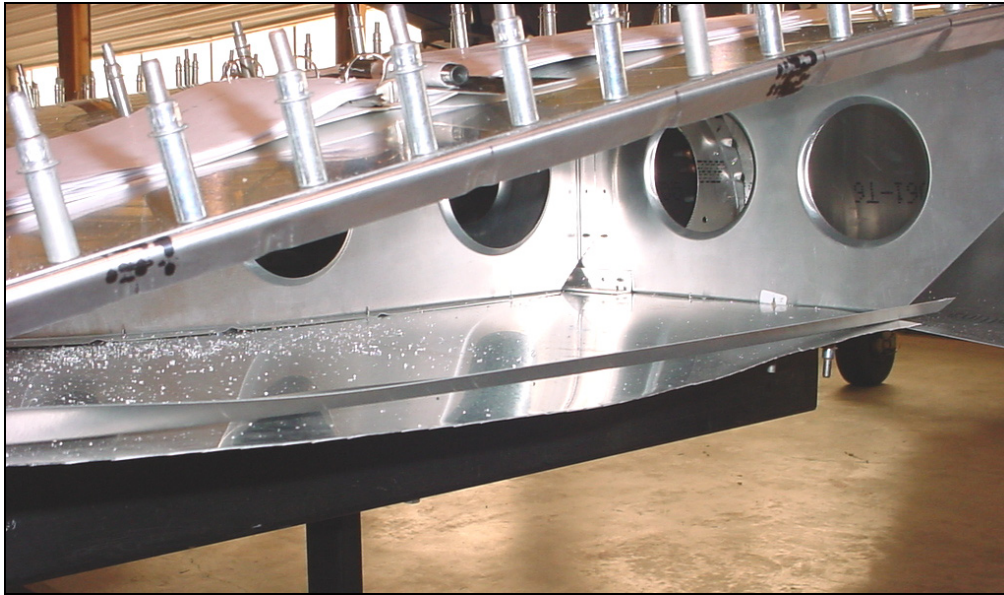


Layout the wing tip coordinates on the bottom skin 7V7-3



A4 pitch 50

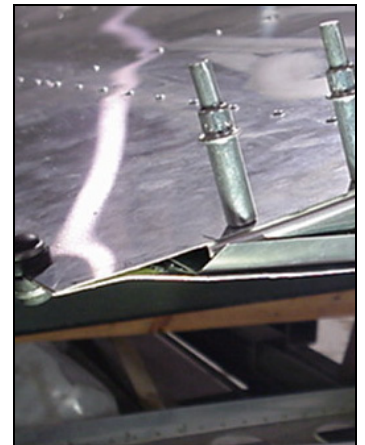
Trim the skin to the line.
Mark the rivet line and layout the rivet spacing on the underside of the skin.



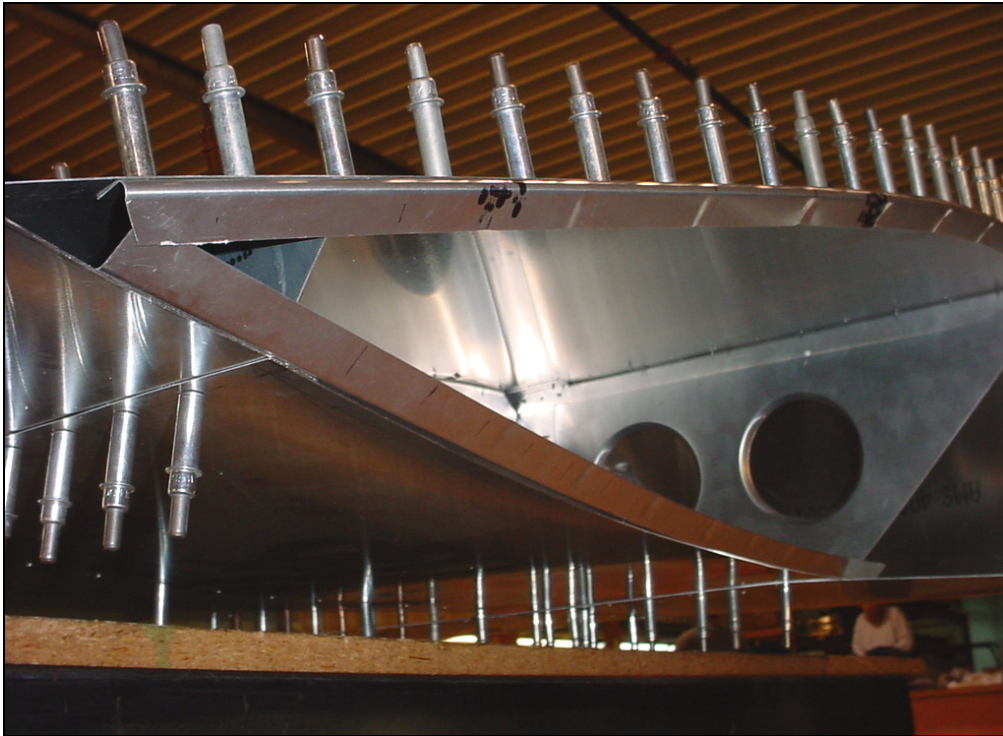
Mark the location of the crimps between the rivets.



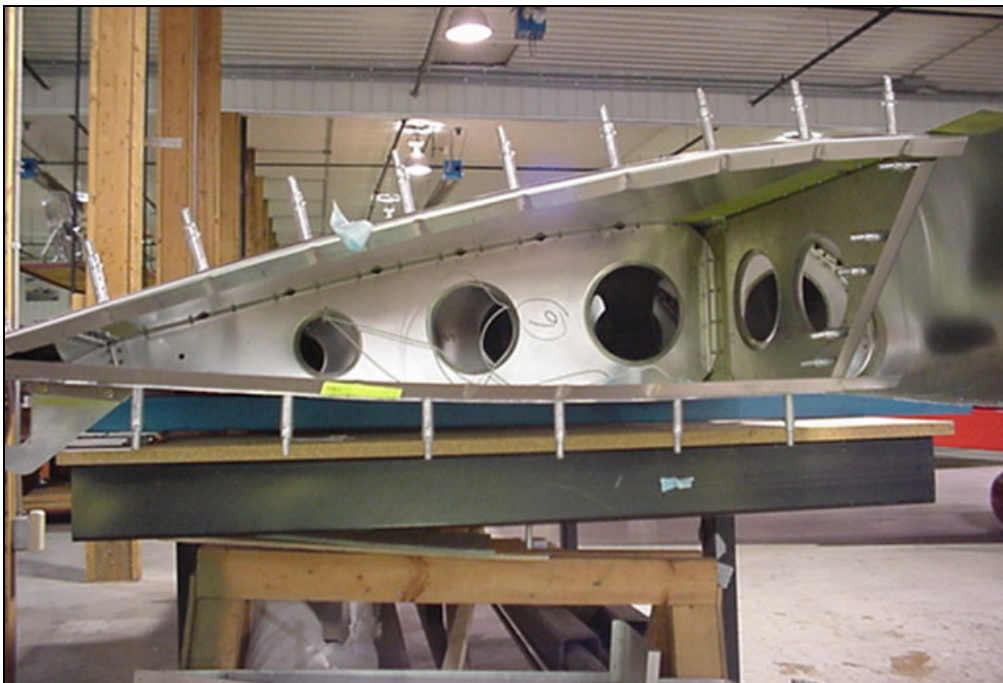
Crimps spaced approximately 100mm apart.



Detail showing how the end of the top and bottom angles overlap each other.



Drill and Cleco



Wing tip.